



## 42 St. Davids Way

Knypersley, ST8 7XA

**Price £330,000**



Carters are delighted to present this executive-style detached property, perfectly situated in a sought-after residential location. Ideal for family living, this spacious home offers a harmonious blend of comfort, style, and practicality.

Boasting four generously sized bedrooms, this property provides ample space for a growing family or visiting guests. Two inviting reception rooms offer versatile living areas, perfect for relaxing evenings or entertaining friends and family.

The home also benefits from two well-appointed bathrooms, ensuring convenience during busy mornings and adding to the overall functionality of the property.

Beyond its impressive layout, this house is a place where lasting memories are made. With its thoughtful design and prime location within a friendly community, it represents an excellent opportunity for those looking to settle in a welcoming neighborhood. Don't miss the chance to make this exceptional property your new home.



# 42 St. Davids Way

Knypersley, ST8 7XA

Price £330,000



## Entrance Hall

UPVC double glazed entrance door to the front elevation. Coving to ceiling. Radiator. Access to the stairs. Laminate flooring.

## Living Room

11'8" x 13'5" (3.56m x 4.09m)

UPVC double glazed sliding patio doors to the rear elevation. Electric fire with a granite surround and wooden mantle. Coving to the ceiling. Radiator. Television point.

## Dining Room

9'11" x 9'2" (3.02m x 2.79m)

UPVC double glazed bay window to the front elevation. Coving to the ceiling. Radiator.

## Kitchen

10' x 10'2" (3.05m x 3.10m)  
UPVC double glazed window to the rear elevation.

A selection of fitted modern high gloss wall, drawer and base units. Granite work surfaces incorporating inset a stainless steel sink with a drainer and mixer tap. Built in electric double oven and grill with an electric four ring induction hob. Integrated fridge and freezer. Heated towel rail. Laminate flooring.

## Utility Room

4'10" x 6'7" (1.47m x 2.01m)

UPVC double glazed entrance door to the side elevation. Fitted wall and base units. Work surface incorporating a stainless steel sink. Space and plumbing for a washing machine and dishwasher. Tiled flooring.

## W.C

UPVC double glazed window to the side elevation. Fitted suite comprising of a low level W/C and a pedestal wash hand basin. Partially tiled walls. Radiator. Laminate flooring.

## Stairs and Landing

UPVC double glazed window to the side elevation. Storage cupboard. Radiator. Loft access with a ladder and lighting.

## Bedroom One

14' x 10'7" (4.27m x 3.23m)

UPVC double glazed feature window to the front elevation. Radiator.

## En Suite

UPVC double glazed window to the side elevation. A modern fitted suite comprising of a shower enclosure, vanity wash hand basin and a recessed W/C. Partially tiled walls. Extractor fan. Shaver point. Radiator. Vinyl flooring.

## Bedroom Two

11'7" x 8'11" (3.53m x 2.72m)

UPVC double glazed window to the front elevation. Radiator. Television point.

## Bedroom Three

10'9" x 8'1" (3.28m x 2.46m)

UPVC double glazed window rear elevation. Radiator.

## Bedroom Four

10'8" x 8'4" (3.25m x 2.54m)

UPVC double glazed window to the rear elevation. Fitted triple mirrored wardrobe. Radiator.

## Bathroom

UPVC double glazed window to the rear elevation. A modern fitted suite comprising of a P shaped panel bath with a hand held shower attachment, vanity wash hand basin and a low level W/C. Extractor fan. Partially tiled walls. Radiator. Vinyl flooring.

## Garage

15'8" x 8'3" (4.78m x 2.51m)

Up and over garage door. Power and lighting.

## Externally

To the front of the property, a

tarmacadam driveway provides off-road parking, complemented by a neatly maintained lawned garden with a gravel border. The spacious rear garden offers a decorative Indian stone patio, a well-kept lawn, raised sleeper flower-bed borders, a garden shed, and the convenience of an outside tap.

## Additional Information

Freehold.  
Council Tax Band D.

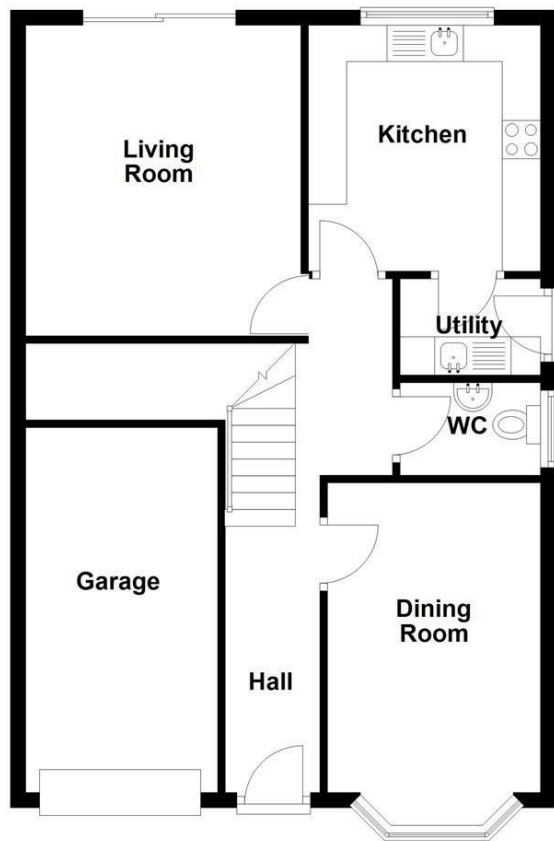
Total Floor Area: 122 Square metres/ 1313 square feet.

## Disclaimer

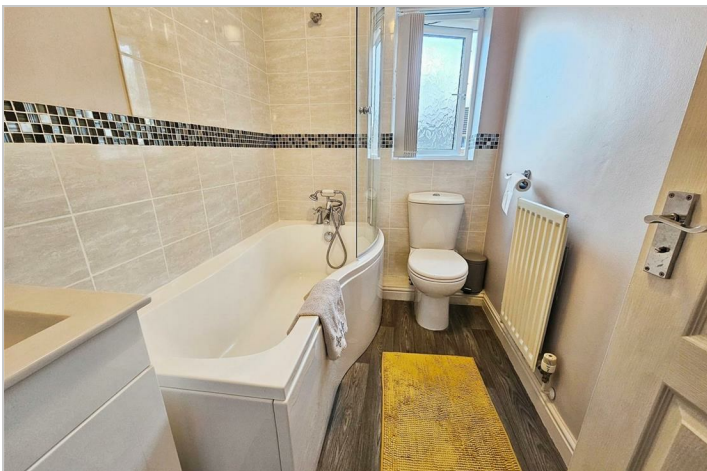
Although we try to ensure accuracy, these details are set out for guidance purposes only and do not form part of a contract or offer. Please note that some photographs have been taken with a wide-angle lens. A final inspection prior to exchange of contracts is recommended. No person in the employment of Carters Estate Agents Ltd has any authority to make any representation or warranty in relation to this property. We obtain some of the property information from land registry as part of our instruction and as we are not legal advisers we can only pass on the information and not comment or advise on any legal aspect of the property. You should take advice from a suitably authorised licensed conveyancer or solicitor in this respect.

Tel: 01782 470391

**Ground Floor**



**First Floor**





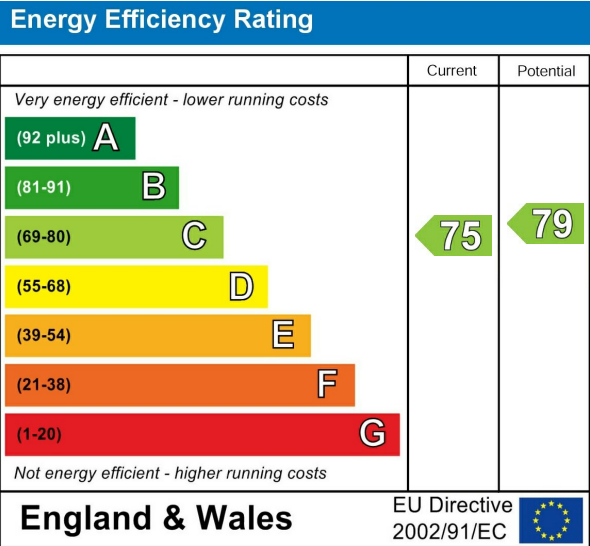
Road Map



Hybrid Map



Energy Efficiency Graph



Viewing

Please contact our Carters Estate Agents Office on 01782 470391 if you wish to arrange a viewing appointment for this property or require further information.

These particulars, whilst believed to be accurate are set out as a general outline only for guidance and do not constitute any part of an offer or contract. Intending purchasers should not rely on them as statements of representation of fact, but must satisfy themselves by inspection or otherwise as to their accuracy. No person in this firms employment has the authority to make or give any representation or warranty in respect of the property.