



Belsize Park Gardens NW3

Parkheath
Sold on Service





Belsize Park Gardens, NW3

Asking Price £885,000

Share of Freehold

- A fabulous, newly refurbished 2 bedroom apartment
- Set in a distinguished semi detached white stucco fronted conversion
- Bright and airy with plenty of character
- Wood flooring, feature fireplace, centre rose and coving
- Gorgeous 18ft semi open plan reception plus sleek, contemporary 10ft kitchen
- 12ft main bedroom with built in wardrobe and 9ft second bedroom
- 696 sq ft approx on the 2nd floor
- *Please note that some of these images have been staged using AI
- Situated on on this premier Belsize Park road, next to Belsize Village and close to all Belsize Park's amenities
- Walking distance to Hampstead Heath, Primrose Hill and Swiss Cottage



Belsize Park/Hampstead
208 Haverstock Hill
NW3 2AG
Sales 020 7431 1234
Lettings 020 7431 3104
nw3@parkheath.com

South/West Hampstead
192 West End Lane
NW6 1SG
Sales & Lettings
Tel 020 7794 7111
192@parkheath.com

Kensal Rise
54-56 Chamberlayne Rd
NW10 3JH
Tel 020 8960 4845
kensal@parkheath.com

Property Management
192 West End Lane
NW6 1SG
020 7433 6174
pm@parkheath.com

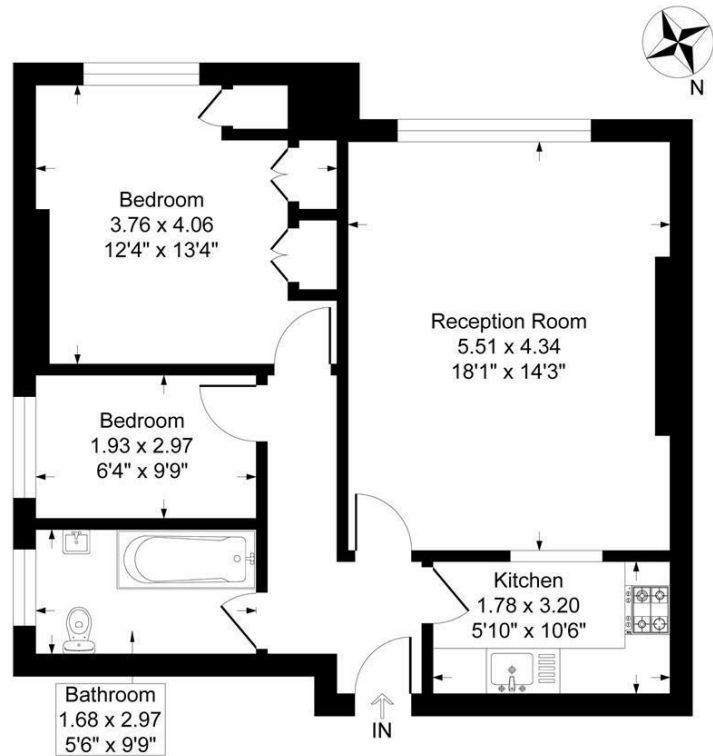
Parkheath
Sold on Service

Camden Tax band F

www.parkheath.com

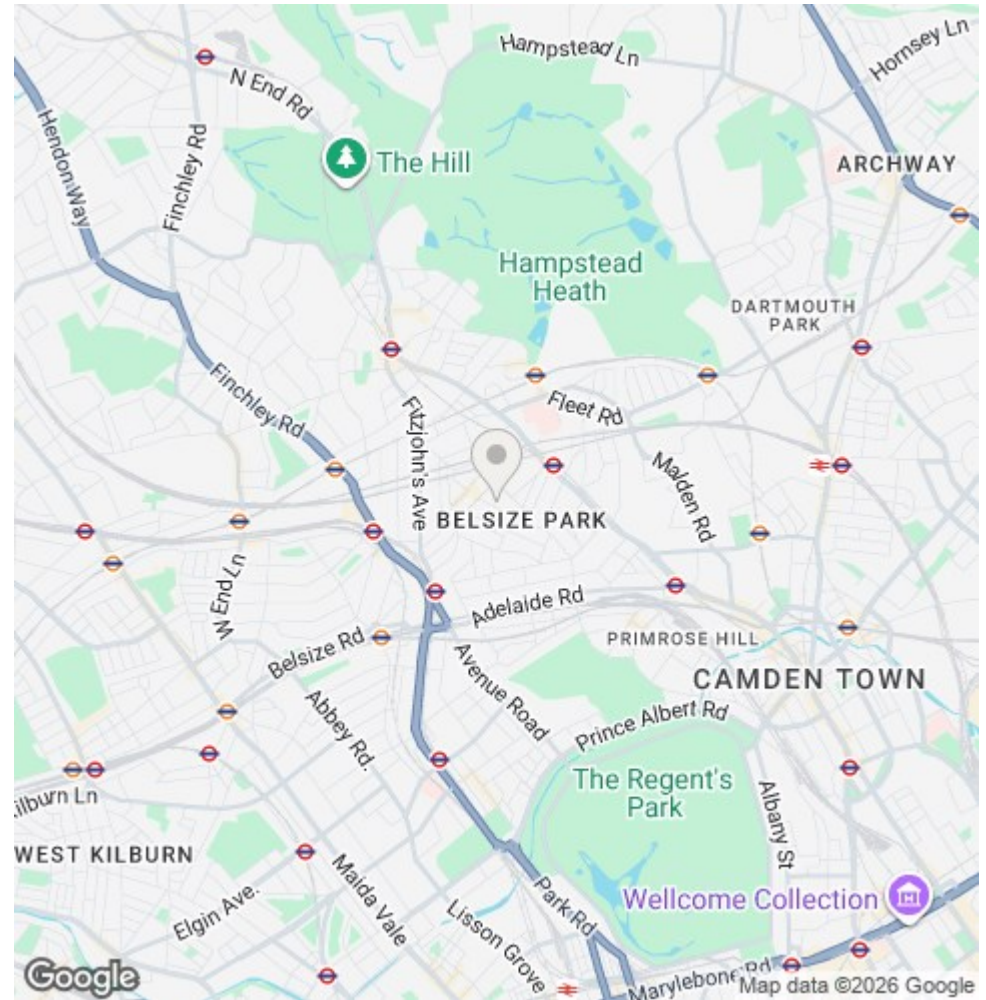
Belsize Park Gardens, London, NW3 4LB

Approximate Gross Internal Floor Area = 64.6 sq m / 696 sq ft



Second Floor

Illustration for identification purposes only, measurements are approximate, not to scale.



The particulars do not constitute part of an offer or contract. The particulars, including text, photographs and plans, are for the guidance only of prospective purchasers/tenants and must not be relied upon as statements of fact. The descriptions provided therein represent the opinion of the author and whilst given in good faith should not be construed as statements of fact. Nothing in these particulars shall be deemed a statement that the property is in good condition or otherwise or that any services or facilities are in good working order. All measurements are approximate