



Amory Tower, 203 Marsh Wall, Canary Wharf, E14 E14 9ZN

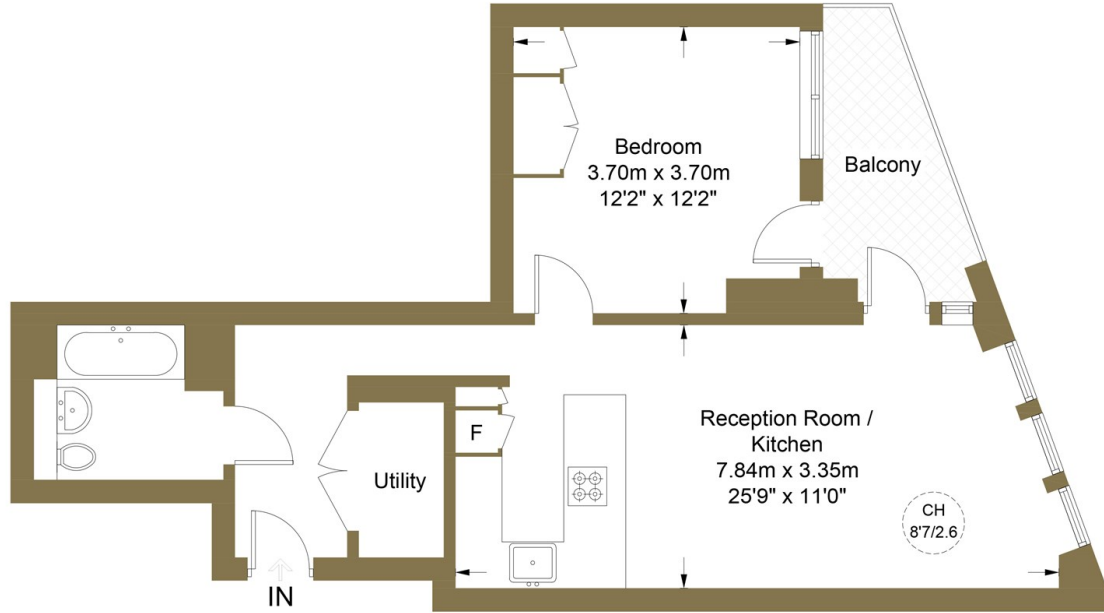
£2,900 Per Month

- Fully furnished
- Modern building
- Business meeting rooms
- Enquire today!
- Approx 581 sq foot
- Residents lounge with bar
- Short walk to underground stations
- Located on the 24th floor
- Spa, swimming pool & gym
- Convenient lifestyle



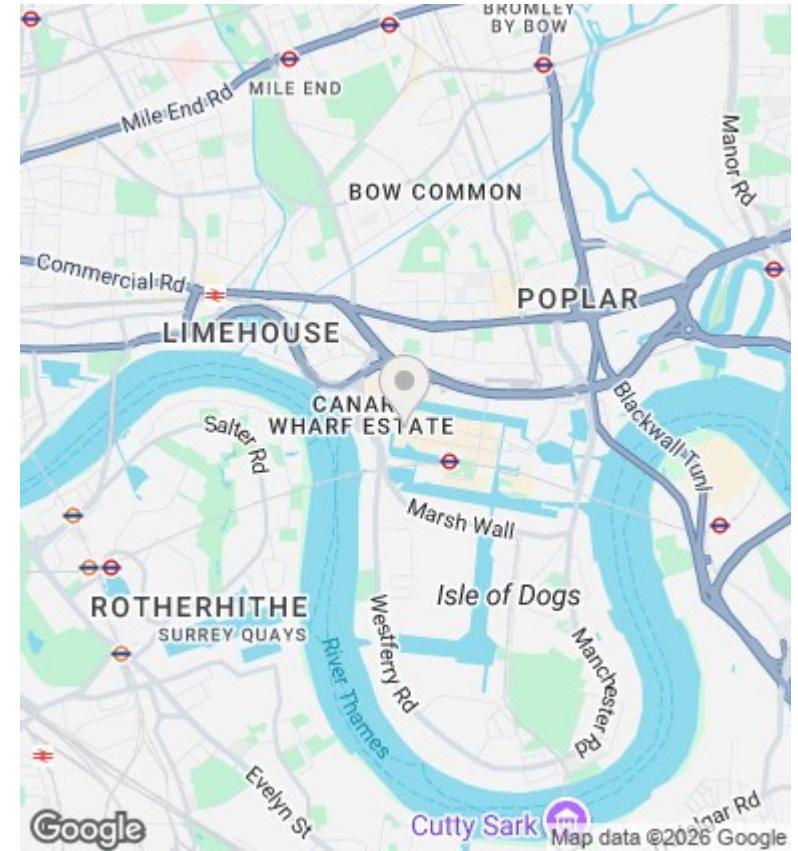
Amory Tower, E14

Approximate Gross Internal Area = 54.0 sq m / 581 sq ft



Twenty Fifth Floor

This plan is for layout guidance only. Not drawn to scale unless stated. Windows and door openings are approximate. Whilst every care is taken in the preparation of this plan, please check all dimensions, shapes and compass bearings before making any decisions reliant upon them. (ID788985)



Viewings

Viewings by arrangement only.
Call 02077225022 to make an appointment.

Council Tax Band

F

EPC Rating:

Energy Efficiency Rating		
	Current	Potential
<i>Very energy efficient - lower running costs</i>		
(92 plus) A		
(81-91) B		
(69-80) C		
(55-68) D		
(39-54) E		
(21-38) F		
(1-20) G		
<i>Not energy efficient - higher running costs</i>		
England & Wales	EU Directive 2002/91/EC	