

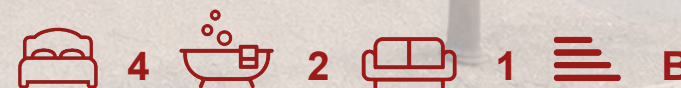
shepherds
A better home
moving experience



144a Bengoe Street

Hertford, SG14 3EY

Guide Price £650,000



144a Bengoe Street

Hertford, SG14 3EY

A beautifully presented and high specification four bedroom, two bathroom end of terrace home, ideally positioned on Bengoe Street in the heart of Bengoe, just a short walk from Hertford town centre, both Hertford North & Hertford East stations, and well-regarded local schooling.

Built circa five years ago, the property benefits from the remainder of its NHBC warranty (approximately 5 years remaining) and offers energy efficient, modern living throughout. The house is finished to a high standard and features individual room controlled underfloor heating across both floors.

The ground floor is centred around a stunning open plan kitchen, living and dining space, thoughtfully designed for modern living and entertaining. Bi-folding doors open directly onto a generous rear garden, which also benefits from useful side access. There is also a convenient downstairs WC.

Upstairs, the accommodation is arranged over two floors. The first floor offers three bedrooms, including two well-proportioned doubles and a further single, all serviced by a modern family bathroom. The top floor is dedicated to an impressive principal suite, complete with a walk-in wardrobe and ensuite shower room.

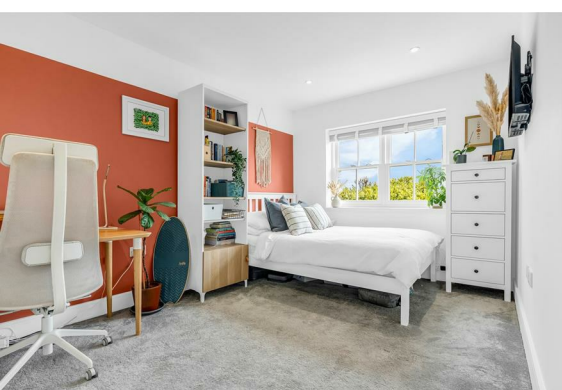
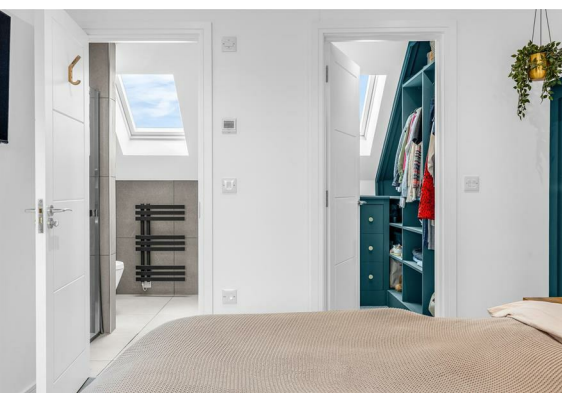
Externally, the property benefits from a good sized rear garden, side access, useful loft storage and two privately owned parking spaces to the rear - a real advantage for this central Bengoe location.

Cicely House is perfectly placed within easy reach of Bengoe Primary School, along with a number of nearby green spaces and riverside walks, making it an ideal purchase for families and commuters alike.

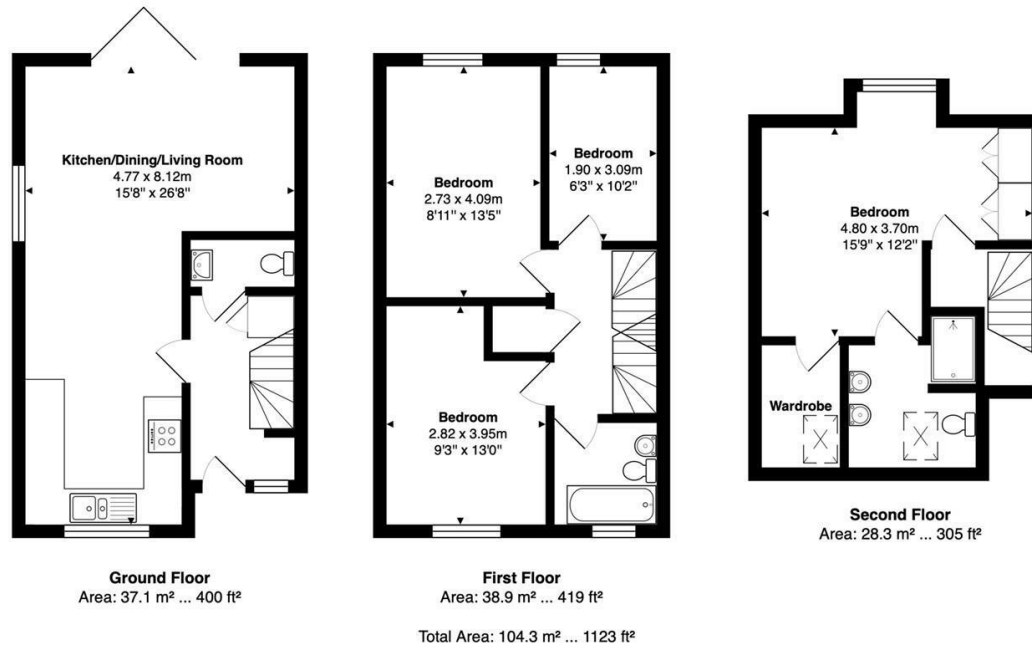




- High specification four bedroom, two bathroom end of terrace home
- Built circa 5 years ago with NHBC warranty remaining (approx. 5 years)
- Energy efficient home with a strong EPC rating
- Individual room controlled underfloor heating throughout
- Stunning open plan kitchen/living/dining space
- Bi-folding doors opening onto a generous rear garden with side access
- Impressive top floor principal suite with walk-in wardrobe & en-suite
- Three further bedrooms (two doubles and one single)
- Modern family bathroom, downstairs WC and useful loft storage
- Two privately owned parking spaces to the rear, ideally located within walking distance of Hertford North & East stations, the town centre, Bengoe Primary School and green spaces



Floor Plan

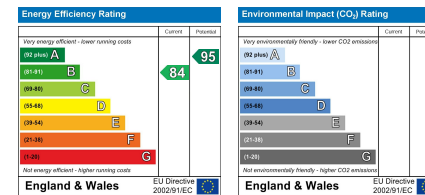


FOR ILLUSTRATIVE PURPOSES ONLY; NOT TO SCALE
 Whilst every attempt has been made to ensure the accuracy of the floor plan shown, all measurements, positioning, fixtures, features, fittings and any other data shown are an approximate interpretation for illustrative purposes only and are not to scale. No responsibility is taken for any error, omission, miss-statement or use of data shown.
 Property marketing provided by www.matthewkyle.co.uk

Viewing

Please contact Shepherds of Hertford on 01992 551955 if you wish to arrange a viewing appointment for this property or require further information.

Energy Performance Graph



These particulars, whilst believed to be accurate are set out as a general outline only for guidance and do not constitute any part of an offer or contract. Intending purchasers should not rely on them as statements of representation of fact, but must satisfy themselves by inspection or otherwise as to their accuracy. No person in this firm's employment has the authority to make or give any representation or warranty in respect of the property.

Riverside House, 6 Millbridge, Hertford, SG14 1PY
 Tel: 01992 551955 Email: enquiries@shepherdsfhertford.co.uk