



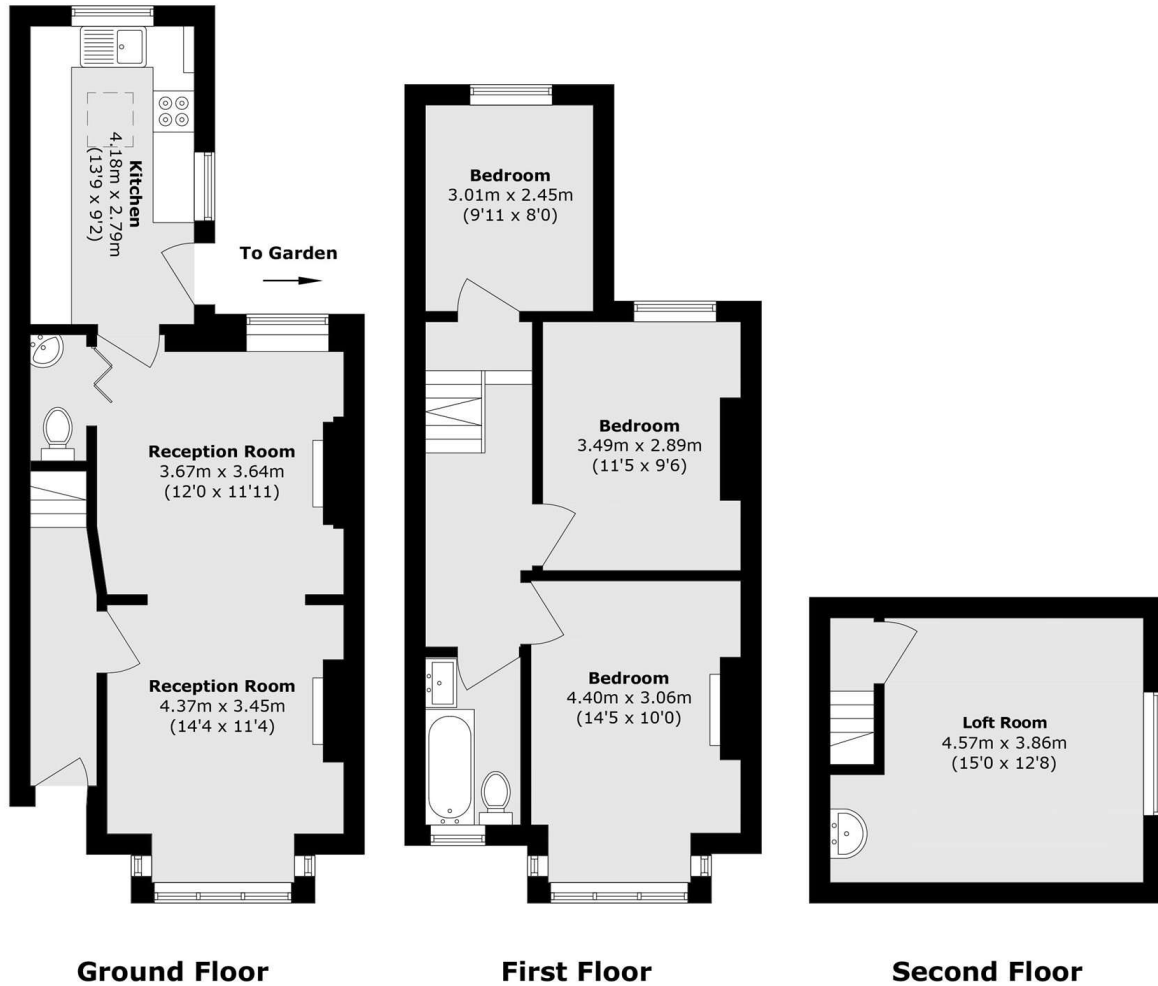
## Temple Road, TW3

**£575,000**

A semi detached, three bedroom family home located in the heart of the high street, on a quiet road. Offering over 1,100 sq ft of living space, further benefits include large private rear garden, period features and no onward chain.

Ideally situated close to Hounslow East station (Piccadilly line) and moments from Hounslow High Street hosting an array of shops and restaurants. There is also easy access to neighbouring areas of Isleworth, Whitton and Twickenham.

- No Onward Chain • Close to Station • Semi Detached •
- Period Features • Close to Amenities • Large Private Garden •



Total area (approx.): 105.6 sq. m (1136.6 sq. ft)

David Conway  
020 8422 5222

Energy Rating: We aim to make our particulars both accurate and reliable. However they are not guaranteed; nor do they form part of an offer or contract. If you require clarification on any points then please contact us, especially if you're travelling some distance to view. Please note that appliances and heating systems have not been tested and therefore no warranties can be given as to their good working order.