



Fin Street, PLYMOUTH PL1 3FF

Offers Over **£285,000 Leasehold**

**ATWELL
MARTIN**
ESTATE AGENTS





Fin Street

Plymouth PL1 3FF

SOLD STC! Stunning waterfront flat with 2 bedrooms, sea views, a west-facing balcony, luxury en-suite, integrated kitchen, and allocated parking. Modern, stylish, and convenient living by the historic Hoe.

Council Tax band: G

Tenure: Leasehold

Service Charge: £2328.00 per annum

Ground Rent: £250.00 per annum

- Two Double Bedroom Waterfront Apartment
- Master En-suite
- Spectacular Sea Views
- Allocated Parking Space
- West Facing Balcony
- Minutes Walk From The Hoe
- Integrated Kitchen



Fin Street

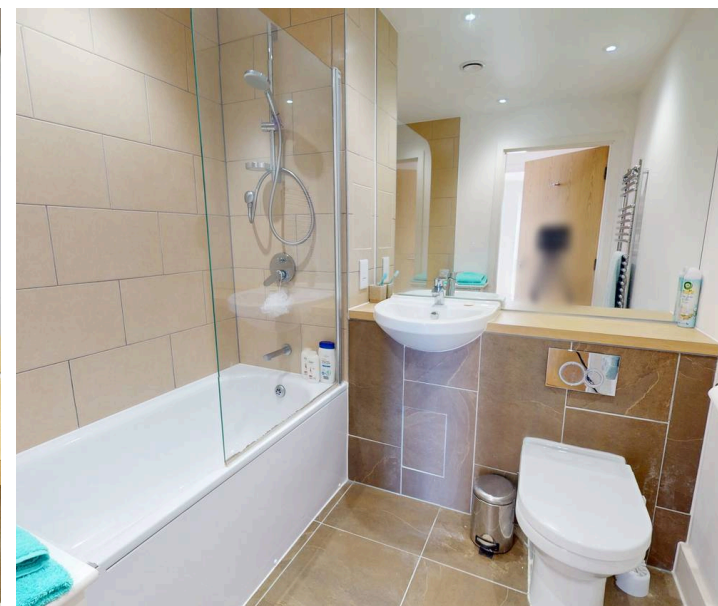
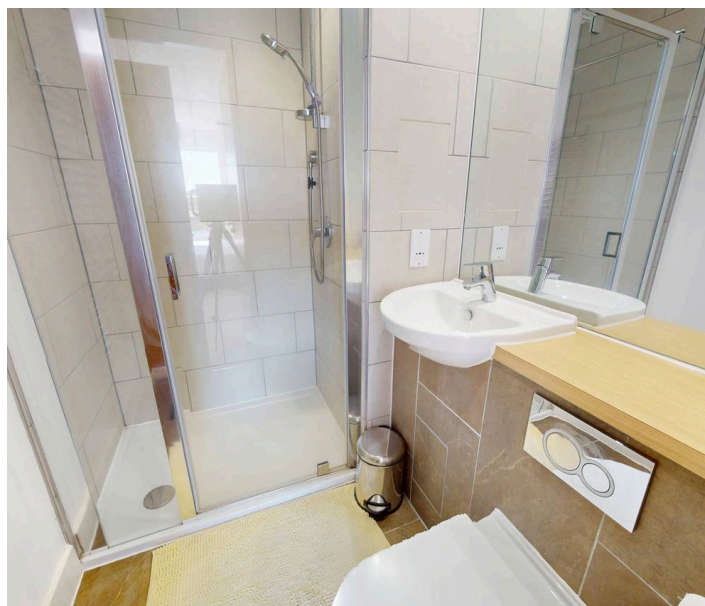
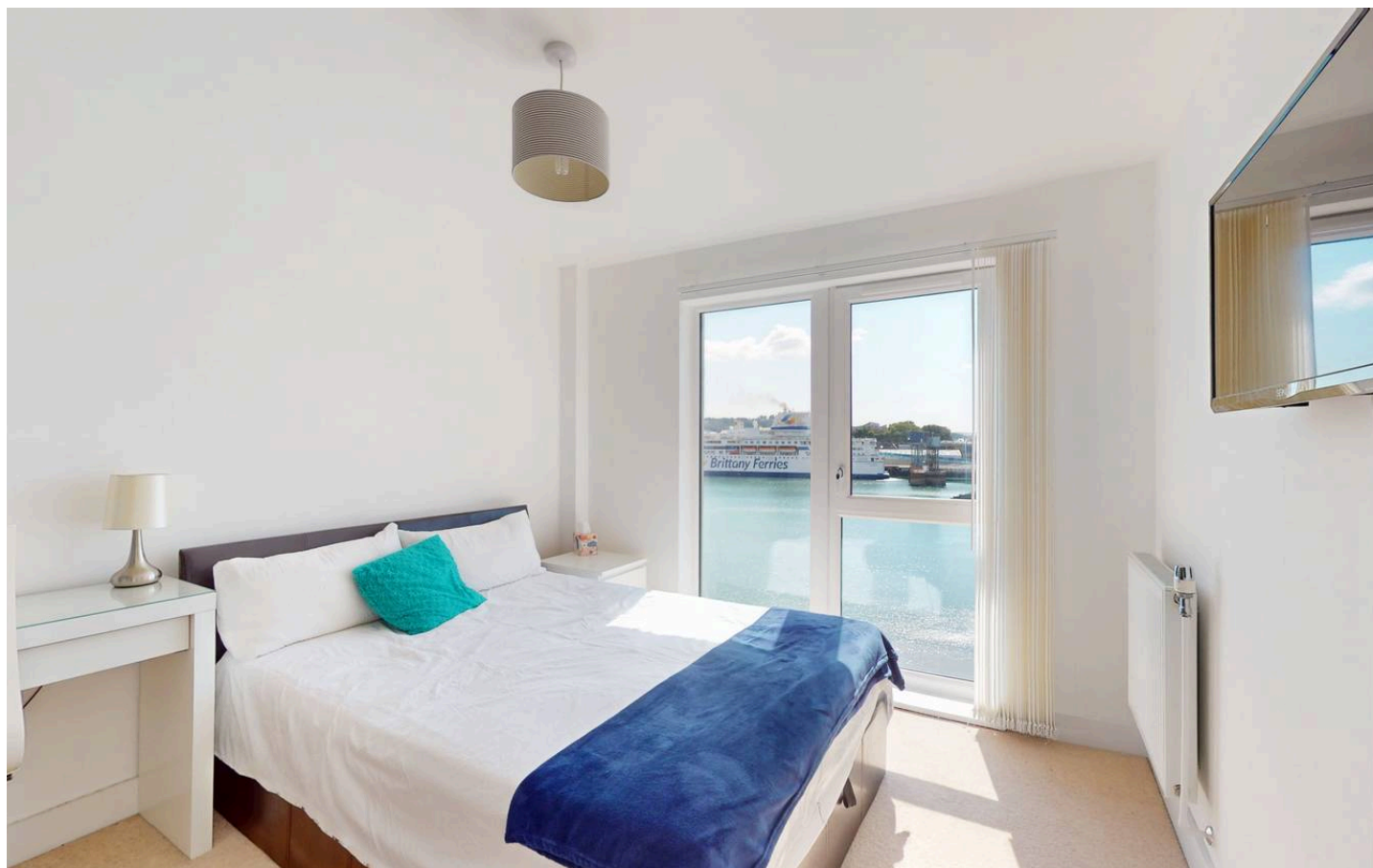
Plymouth PL1 3FF

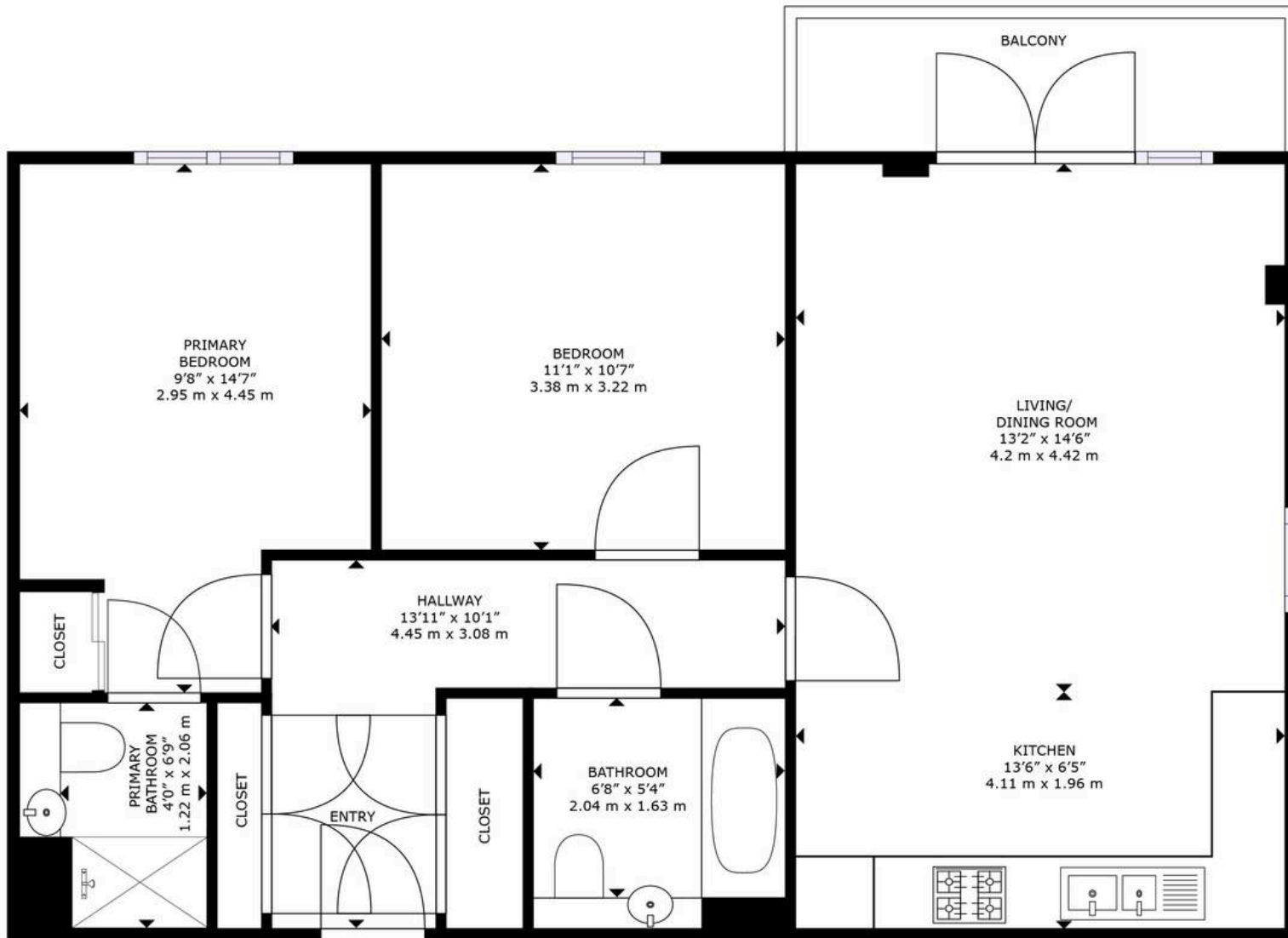
Located in the heart of the vibrant waterfront community, this stunning two-bedroom flat is a hidden gem. Boasting a prime location, this waterfront apartment offers two spacious double bedrooms, with the master bedroom featuring its own luxurious en-suite bathroom.

Prepare to be captivated by the spectacular sea views that can be enjoyed from the comfort of your own living room. Watch the sunsets paint the sky in brilliant colours as you unwind after a long day. With a west-facing balcony, you can sip your morning coffee while soaking in the breathtaking scenery, making every moment a picturesque one.

This modern abode is designed with luxury in mind, featuring an integrated kitchen that is both functional and stylish. Whether you're a seasoned chef or a casual cook, you'll appreciate the top-of-the-line appliances and sleek finishes that make meal preparations a delight.

Convenience is key with this property, as it comes with an allocated parking space, ensuring that you never have to worry about finding a spot after a long day out. Just a few minutes' walk from the historic Hoe, you can explore the scenic waterfront and take in the sights and sounds of this bustling neighbourhood.



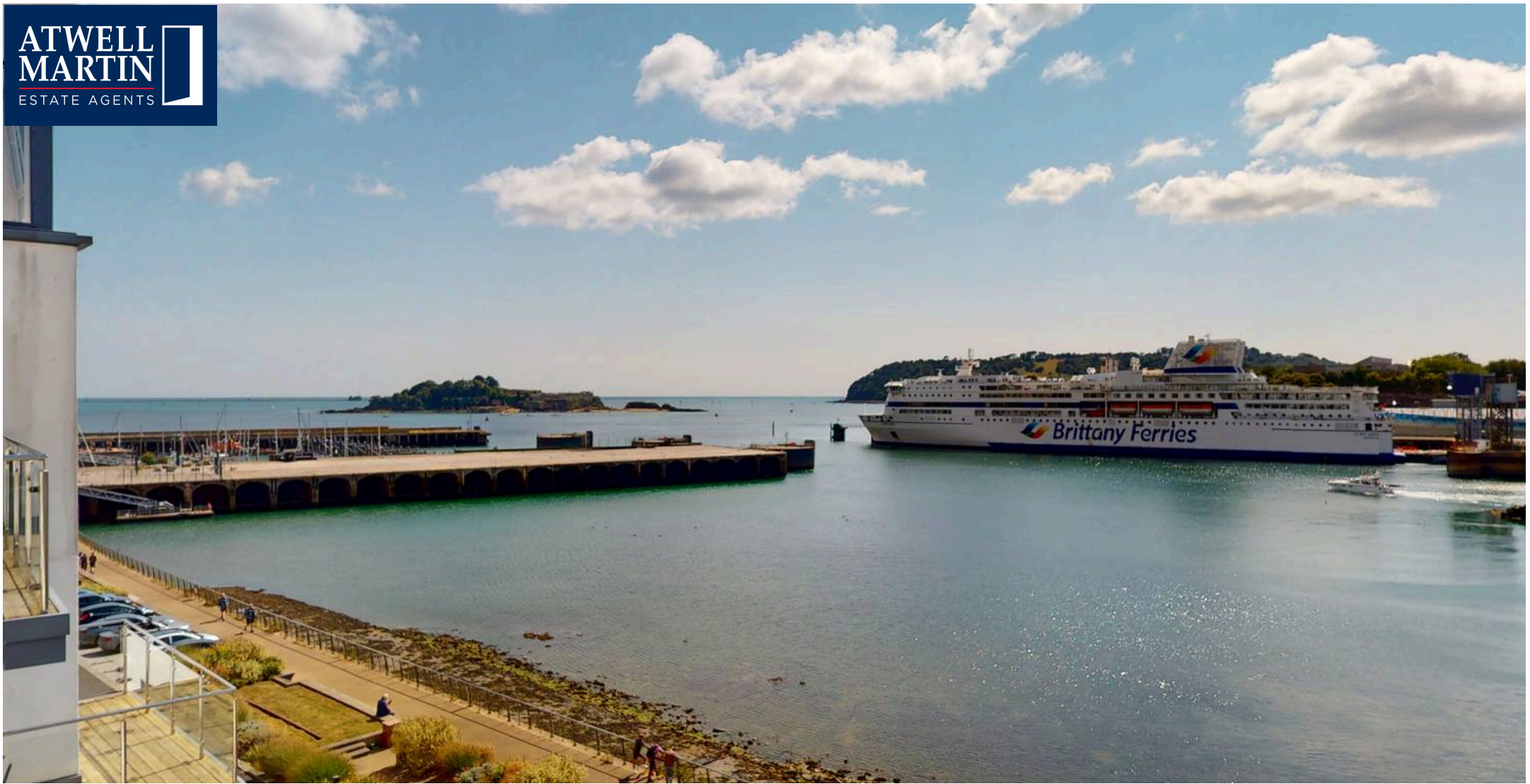


FLOOR PLAN



GROSS INTERNAL AREA
 FLOOR PLAN: 705 sq. ft, 65 m²
 SIZES AND DIMENSIONS ARE APPROXIMATE, ACTUAL MAY VARY.





Atwell Martin

Atwell Martin, 65 Southside Street – PL1 2LA

01752 202121

plymouthsales@atwell-martin.co.uk

plymouth.atwellmartin.co.uk/

Atwell Martin Plymouth endeavour to ensure the accuracy of property details produced and displayed. Please note that we have not tested any apparatus, equipment, fixtures, fittings or services and so cannot verify that they are connected, in working order or fit for purpose. It is imperative that the buyer of any property makes such checks, prior to purchase so as to satisfy themselves of the properties suitability for their purchase. .

