



15 Roemead Drive, Yapton, BN18 0ZE
£450,000 Freehold



3 Bedrooms



2 Bathrooms



2 Reception Rooms

SW

Sims Williams

Key Features

- Detached Family Home
- High Specification Throughout
- Generous Sitting Room
- Kitchen/Dining Room
- Downstairs Cloakroom & Utility
- 3 Double Bedrooms
- En Suite To Principal
- South Westerly Rear Garden
- Parking for 2 Vehicles

EPC Rating

Current = B

Potential = A

Council Tax Band

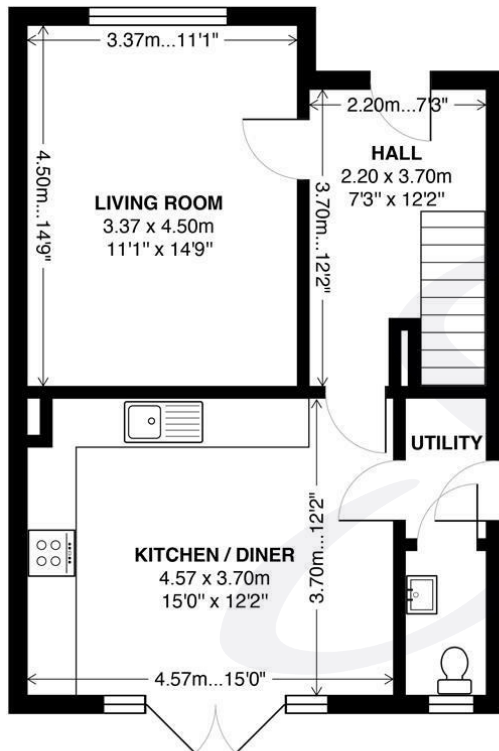
Band = D

Tenure - Freehold

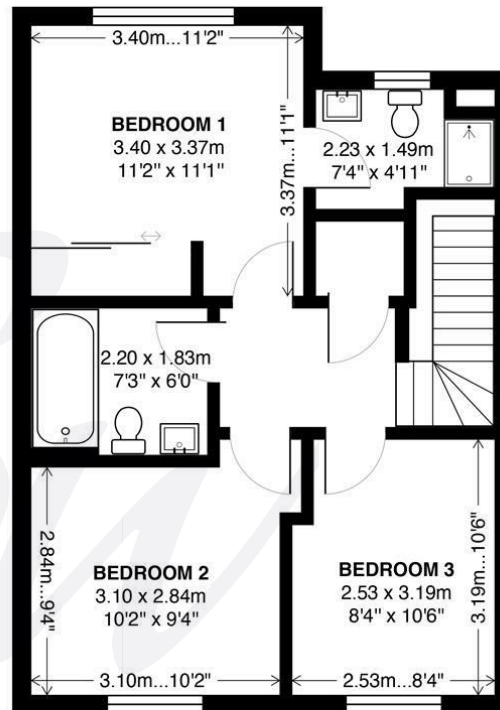
Estate Charges: £360.00 pa

Trinity Estates





GROUND FLOOR



FIRST FLOOR

APPROXIMATE GROSS INTERNAL AREA = 968 SQ FT / 90 SQ M

NOT TO SCALE
Produced for Sims Williams



simswilliams.co.uk

CHICHESTER

8-9 Southgate

Sales 01243 787868

Lettings 01243 836055

chichester@simswilliams.co.uk

WALBERTON

5 Maple Parade

Sales 01243 551368

Lettings 01243 836055

walberton@simswilliams.co.uk

ARUNDEL

8a High Street

Sales 01903 885678

Lettings 01903 881133

arundel@simswilliams.co.uk

BOGNOR REGIS

46 High Street

Sales 01243 862626

Lettings 01243 836055

bognor-regis@simswilliams.co.uk

Viewing Strictly by arrangement via the vendor's agent Sims Williams 01243 551368. These particulars are believed to be correct but their accuracy is not guaranteed and they do not form part of any contract.