



Wentworth House, Ferndale, Much Hadham
SG10 6DW
Price Guide £825,000



stevenoates.com



Wentworth House Ferndale, Much Hadham, Herts, SG10 6DW

An attractive 4 bedroom detached family home located within the centre of the pretty village of Much Hadham. The well balanced accommodation with generous proportions throughout comprises of an entrance porch leading to a large entrance hall with downstairs wc., a large living room and a kitchen/diner/living room completes the ground floor. On the first floor, there is a spacious landing providing access to all four bedrooms, whilst there is an en-suite shower room to the main bedroom and a family bathroom. Externally, the property benefits from parking of upto 3 cars including a carport with an additional parking space beyond. The rear garden is beautifully landscaped in a courtyard style and enjoys a sunny south-westerly aspect.

The property sits in a prime position in the heart of the village on a quiet residential road, just a short distance from all of the village amenities. The charming village of Much Hadham offers a strong sense of community and a range of well-supported facilities, including an excellent primary school, a popular village pub, a convenience shop, a doctor's surgery, and a dental practice. There is also a nearby recreation ground with tennis courts and a well-established bowls club, providing excellent opportunities for leisure and outdoor activities. The nearby market towns of Ware, Hertford, and Bishop's Stortford are all easily accessible, offering a wider selection of shops, restaurants, and leisure facilities. Each town also benefits from mainline train stations with fast and direct services into London, as well as access to highly regarded state and independent schools.



70 Fore Street, Hertford, Hertfordshire, SG14 1BY



70 Fore Street, Hertford, Hertfordshire, SG14 1BY



70 Fore Street, Hertford, Hertfordshire, SG14 1BY





70 Fore Street, Hertford, Hertfordshire, SG14 1BY



70 Fore Street, Hertford, Hertfordshire, SG14 1BY

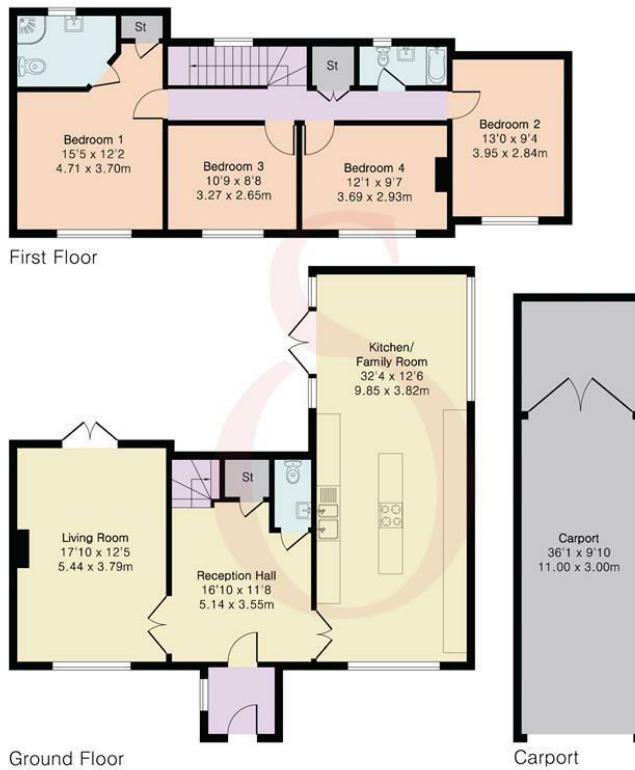


70 Fore Street, Hertford, Hertfordshire, SG14 1BY

**Approximate Gross Internal Area 1579 sq ft - 147 sq m
(Excluding Carport)**

Ground Floor Area 872 sq ft - 81 sq m

First Floor Area 707 sq ft - 66 sq m



Floor plan produced in accordance with RICS Property Measurement 2nd Edition. Although Pink Plan Ltd ensures the highest level of accuracy, measurements of doors, windows and rooms are approximate and no responsibility is taken for error, omission or misstatement. These plans are for representation purposes only and no guarantee is given on the total square footage of the property within this plan. The figure icon is for initial guidance only and should not be relied on as a basis of valuation.



These particulars, whilst believed to be accurate are set out as a general outline only for guidance and do not constitute any part of an offer or contract. Intending purchasers should not rely on them as statements of representation of fact, but must satisfy themselves by inspection or otherwise as to their accuracy. No person in this firm's employment has the authority to make or give any representation or warranty in respect of the property.

