



Price
£445,000

Freehold

3x  2x  1x 

**Worrall Drive,
Wouldham, Rochester,
Kent, ME1**

Wards
Helping you move forwards



Main features

- Full market value **£445,000** or **60% share £267,000**
- Rarely available under shared ownership!
- Picturesque, sought after village location
- Off-road parking
- Kitchen/Diner perfect for entertaining

Accommodation

GROUND FLOOR

Hallway
 Lounge: 13'1 x 12'1 (3.99m x 3.69m)
 Cloakroom: 5'10 x 4'9 (1.78m x 1.45m)
 Kitchen/Diner: 15'6 x 13'11 (4.73m x 4.24m)

FIRST FLOOR

Landing
 Bedroom 2: 15'8 x 11'5 (4.78m x 3.48m)
 Bedroom 3: 11'6 x 8'2 (3.51m x 2.49m)
 Bathroom: 7'0 x 6'5 (2.14m x 1.96m)

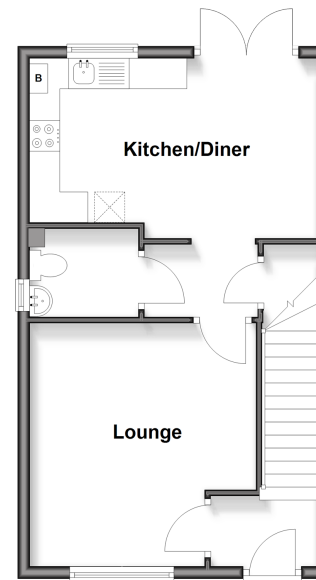
SECOND FLOOR

Landing
 Bedroom 1: 20'6 x 11'9 (6.25m x 3.58m)
 En-Suite Shower Room: 6'11 x 5'4 (2.11m x 1.63m)
 Dressing Area: 7'8 x 6'7 (2.34m x 2.01m)

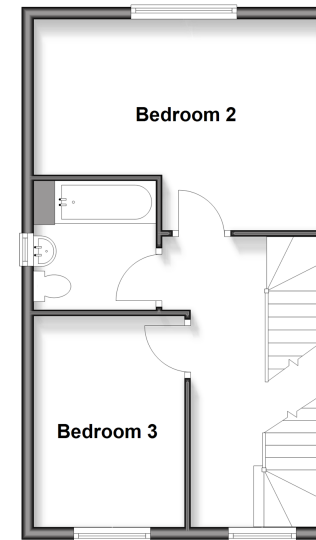
OUTSIDE

Rear Garden
 Off-Road Parking

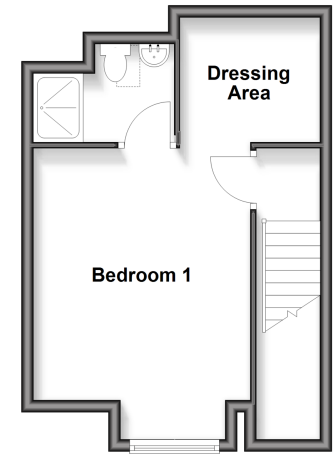
Ground Floor
 Approx. 39.6 sq. metres (426.5 sq. feet)



First Floor
 Approx. 39.6 sq. metres (426.5 sq. feet)



Second Floor
 Approx. 30.1 sq. metres (323.5 sq. feet)



Call Rochester - 01634 830925 ■ wardsofkent.co.uk

■ Legal advice should be taken to verify fixtures/fittings, planning, alterations and/or lease details

■ Appliances & services are untested, dimensions are approximate and floor plans are not to scale



11530159/20260224/SN/AB