



7 Bridge Street

Tutbury, Burton-On-Trent, DE13 9LZ

Nestled in the charming village of Tutbury, this newly renovated ground floor apartment on Bridge Street offers a perfect blend of modern living and village charm. With one spacious bedroom and a well-appointed shower room, this flat is ideal for individuals or couples seeking a comfortable home.

The property boasts a generous reception room that provides ample space for relaxation and entertaining. The large kitchen is a standout feature, offering plenty of room for culinary creativity and dining. Its thoughtful design ensures that you will enjoy both functionality and style.

Conveniently located just off the High Street, residents will benefit from easy access to a variety of local amenities, including shops, cafes, and restaurants. For those who commute, the nearby railway station at Hatton offers excellent transport links to Uttoxeter and Burton upon Trent, making it an ideal location for professionals.

£850 Per Calendar Month

7 Bridge Street

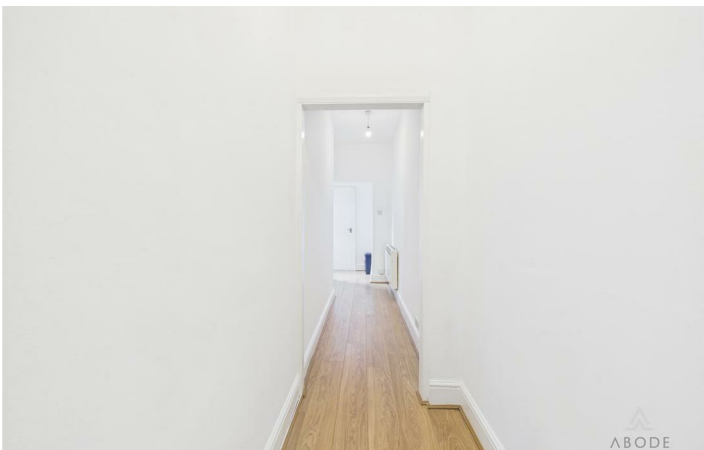
Tutbury, Burton-On-Trent, DE13 9LZ



- TUTBURY VILLAGE
- SHOWER ROOM
- RAILWAY STATION AT HATTON - 5 MINUTE WALK
- NEWLY RENOVATED GROUND FLOOR APARTMENT
- SHARED REAR GARDEN
- A50 & A38 MAIN ROADS WITHIN CLOSE PROXIMITY
- SPACIOUS THROUGHOUT
- EASY WALKING DISTANCE TO LOCAL SHOPS & BARS



[Directions](#)



Floor Plan



These particulars, whilst believed to be accurate are set out as a general outline only for guidance and do not constitute any part of an offer or contract. Intending purchasers should not rely on them as statements of representation of fact, but must satisfy themselves by inspection or otherwise as to their accuracy. No person in this firm's employment has the authority to make or give any representation or warranty in respect of the property.

36a High Street, Tutbury, Staffordshire, DE13 9LS
Tel: 01283 845888 Email: lettings@abodemidlands.co.uk

