



Guide Price
£230,000

Leasehold

1x  1x  1x 

**Basement Flat,
Lansdowne Street,
Hove, East Sussex, BN3**

OVER 60?

Secure this property
for up to **59% less!**

cubitt & west
Helping you move forwards



Main features

- Central Hove/BN3 location, moments from the seafront and beach
- Lots of cafes, restaurants and bars close by
- Walking distance to the train station
- Own street entrance
- Rear patio garden

Accommodation

LOWER GROUND FLOOR

Entrance Hall

Lounge : 13'3 into bay x 12'11
(4.04m x 3.94m)

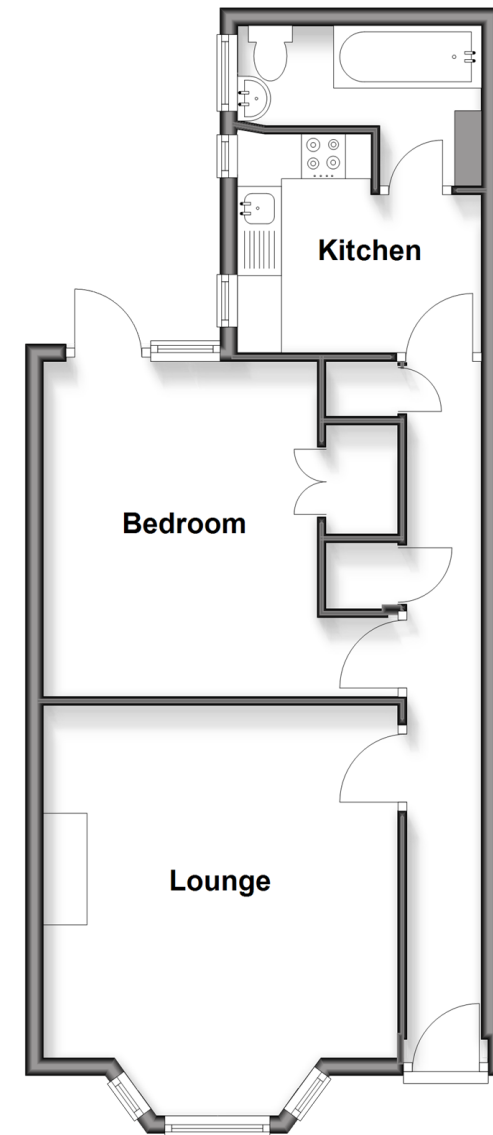
Bedroom : 12'4 x 10'3 (3.76m x 3.13m)

Kitchen : 9'1 x 6'7 (2.77m x 2.01m)

Bathroom

Lower Ground Floor

Approx. 50.5 sq. metres (543.5 sq. feet)



Call Central Brighton - 01273 820600 ■ cubittandwest.co.uk

- Legal advice should be taken to verify fixtures/fittings, planning, alterations and/or lease details
- Appliances & services are untested, dimensions are approximate and floor plans are not to scale
- Through a Homewise Home For Life Plan people aged 60+ can secure this property for up to 59% less, by purchasing a Lifetime Lease



32412886/20260225/EM/EM