



CGI - Maltby house type

Foxgrove Village, Clifton

Three-bedroom detached house available to buy through shared ownership

“

A home of your own at a price you can afford

”

 ncha

Specifications

Kitchen

- Fitted modern kitchen
- Integrated oven and hob
- Stainless steel extractor hood
- Contemporary mixer taps
- Vinyl flooring

Bathroom

- White suite with chrome fittings
- Tiling to ceiling around the bath
- Shower over bath
- Glass shower screen
- Vinyl flooring

Heating

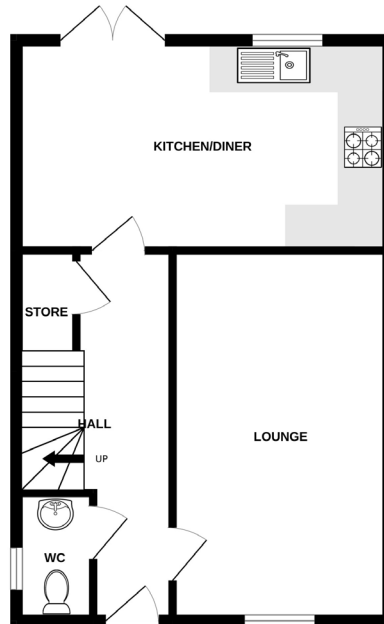
- Gas fired central heating
- Thermostatic radiator valves
- Double glazed windows

External

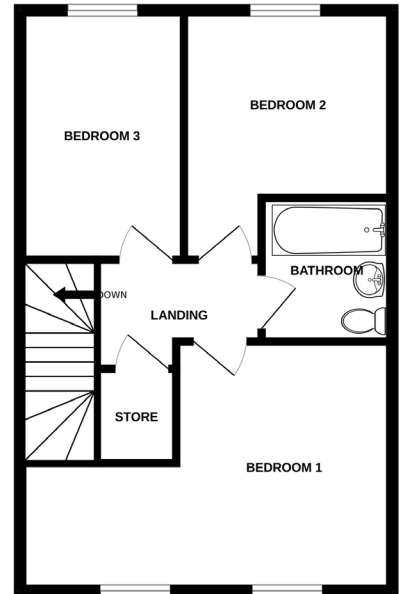
- Allocated off-street parking
- Enclosed rear garden
- Front and rear outside lights

Decoration

- White emulsion walls and ceilings
- White gloss painted woodwork



Ground floor



First floor

Energy assessment

- Predicted energy assessment – B

Key dimensions

Room	Dimensions
Living room	3122mm x 5230mm
Kitchen/Dining	5355mm x 3018mm
Bedroom 1	5355mm x 3309mm
Bedroom 2	2556mm x 2922mm
Bedroom 3	2370mm x 3590mm

Any measurements quoted are approximate and must be checked on site and against the layout, which may vary due to unforeseen circumstances. Floor plans may be mirror handed. These details have been produced for illustrative purposes only and does not form any part of a contract or constitute an offer. Actual specification may vary from that shown in floor plan.

How to find us

The development is located at Foxgrove Village in Clifton. If using a SatNav, the postcode is NG11 8SU.

Buying more shares

The homes are sold on a standard shared ownership lease, so you can purchase more shares to 100% and acquire the freehold.



0345 650 1204
nchasales@ncha.org.uk
www.ncha.org.uk

@NCHASalesTeam
@NCHASales