



Sloane Avenue, SW3

£420,000

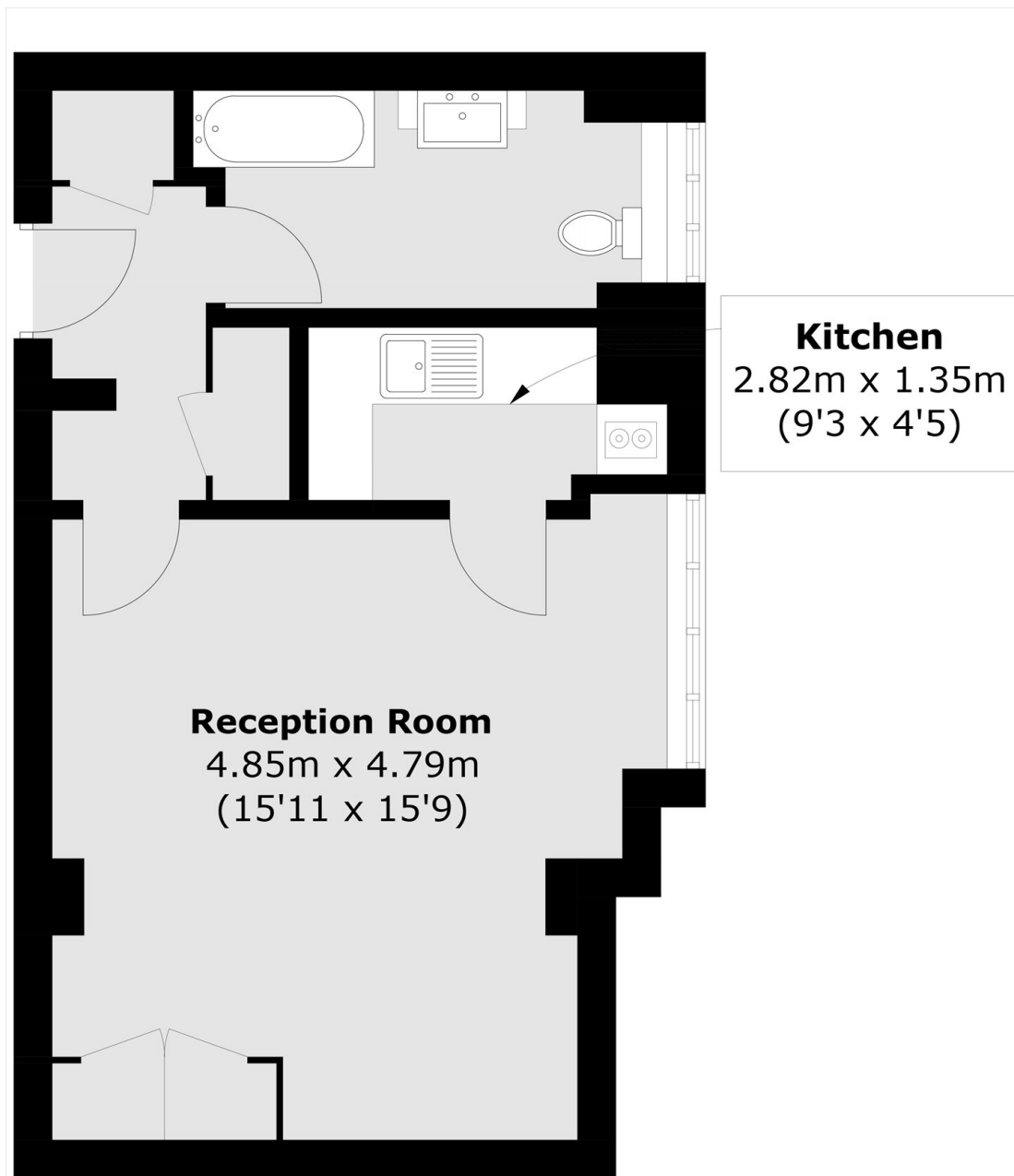
Set on the eighth floor within a portered building, this studio apartment would work very well as a London base or rental investment. This property is in good condition although would now benefit from a light refurbishment.

Nell Gwynn House is a popular, portered block located on Sloane Avenue which is in close proximity to Sloane Square, South Kensington and the King's Road.

Features

- Share of Freehold
- Studio Apartment
- Lift
- Porter
- Popular Location
- Ideal Rental Investment

Sloane Avenue, London, SW3



Eighth Floor

Total area (approx.): 37.7 sq. m (405.8 sq. ft)