

# BETTLES, MILES & HOLLAND

## Estate Agents - Valuers

Registered Office: 15 SEAVIEW STREET, CLEETHORPES, NORTH EAST LINCOLNSHIRE, DN35 8EU

Telephone: (01472) 691455 / 698698

Email: [info@bmhestateagents.co.uk](mailto:info@bmhestateagents.co.uk)

To view our Properties on the Internet:

[www.bmhestateagents.com](http://www.bmhestateagents.com)

[www.rightmove.co.uk](http://www.rightmove.co.uk)

[www.onthemarket.com](http://www.onthemarket.com)

[www.zoopla.co.uk](http://www.zoopla.co.uk)

### PROPERTY FOR SALE

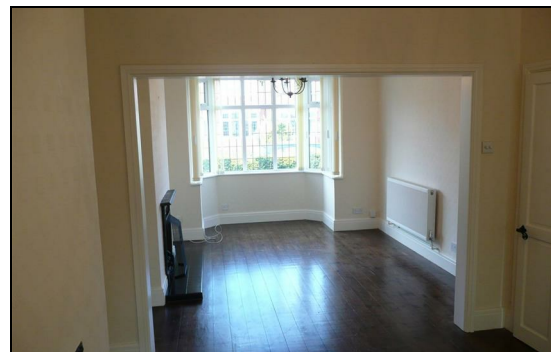
### 59 ELLISTON STREET, CLEETHORPES



Unexpectedly back on the lettings market is this lovely semi-detached property, there is a large through room, fitted kitchen with integral oven / hob, conservatory to the rear of the property, 3 bedrooms and an upstairs bathroom, double glazing and gas central heating. There is a driveway to the front offering off-street parking and a nice tidy rear garden.

Council Tax B

£150 holding deposit payable on application, to be deducted from first months rent.



**PURCHASE PRICE £725 PCM**

**59 ELLISTON STREET, CLEETHORPES**

VIEWING

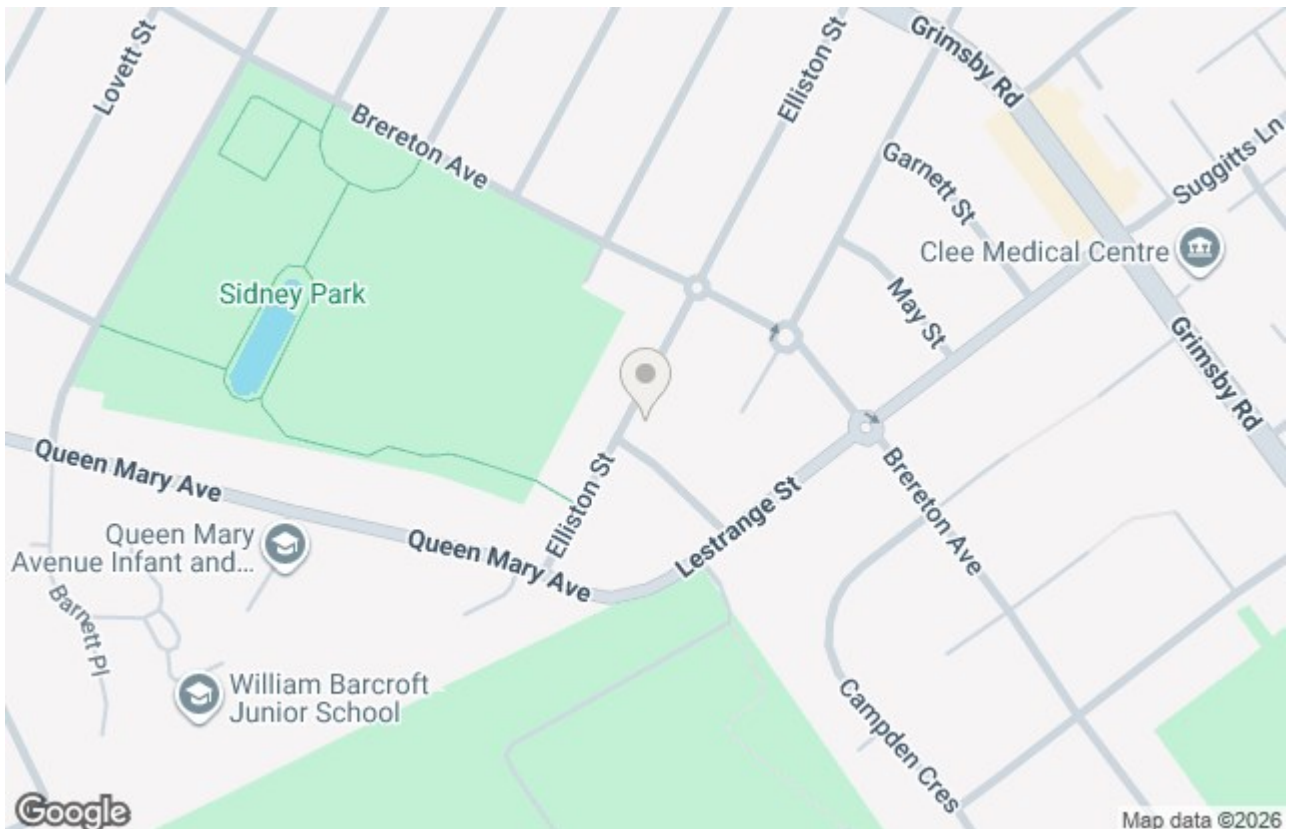
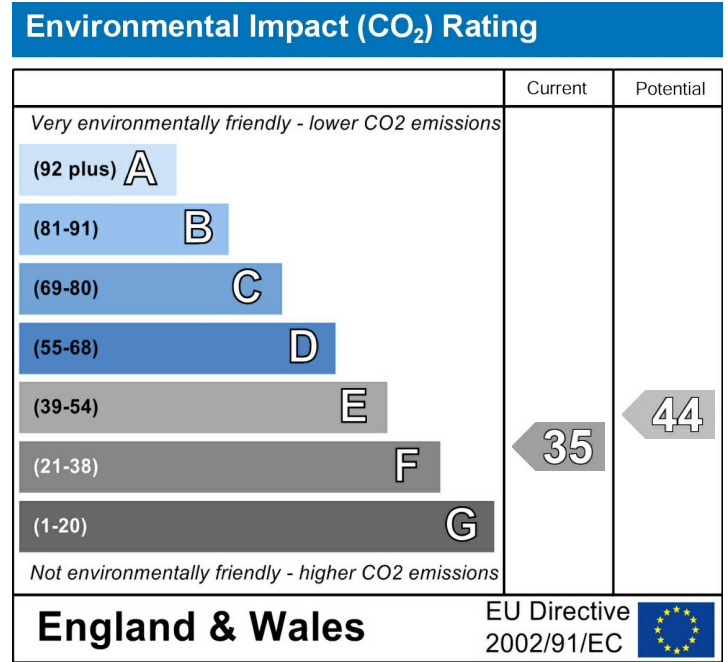
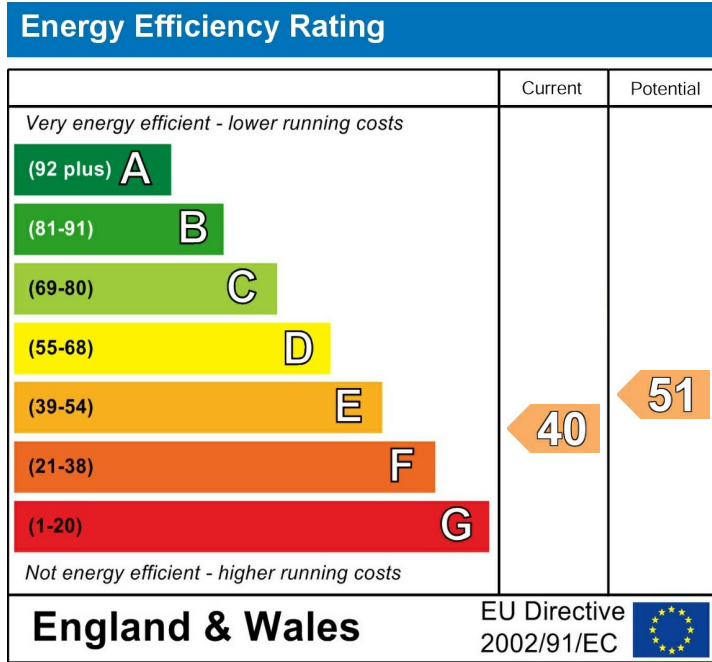
By appointment with this office

COUNCIL TAX BAND

B

TENURE

We understand the property to be , but this is to be confirmed by the solicitors





## ADDITIONAL NOTES

### **FREE VALUATIONS:**

We offer a free valuation with no obligation, just call the office on 01472 698698 and ask for your free valuation, we are flexible with our times.

### **B.M.H. PROPERTY MANAGEMENT.**

We offer a letting/management service:-

Four weekly payments / Regular inspections / credit checks / Our monthly fee is 12% **Inclusive of VAT** (i.e. 10% + V.A.T.) Call us if you are interested.

### **MORTGAGE ADVICE**

#### **WE CAN OFFER INDEPENDENT MORTGAGE ADVICE**

Our local broker Emma Hyldon can help you find the best mortgage to suit you providing personal face to face expert advice either at our office or in the comfort of your own home.

Contact our office for further details on 01472 698698 or speak to Emma Hyldon directly on 07522 622 159 or [emma@personal-touch-mortgages.co.uk](mailto:emma@personal-touch-mortgages.co.uk).

Bettles, Miles and Holland Estate Agents is an introducer to Personal Touch Mortgages (Lincs) Ltd, which is an appointed representative of PRIMIS Mortgage Network, which is authorised and regulated by the Financial Conduct Authority.

*YOUR HOME MAY BE REPOSSESSED IF YOU DO NOT KEEP UP REPAYMENTS ON YOUR MORTGAGE.*

*They normally charge a fee for mortgage advice. The amount will depend on your circumstances. A typical fee would be £99 payable upon application and further £300 payable on production of offer.*

*(BMH may recommend the services of Emma Hyldon Personal Touch Mortgages but it is entirely sellers/potential buyers own decision to use the services and they are under no obligation to do so. BMH receive a referral fee/benefits worth £75 per mortgage completion. This has NO effect on the price sellers/potential buyers pay for the Mortgage Advice. It is purely an agreement between BMH and Emma Hyldon.)*

**STATUTORY NOTICE: YOUR HOME IS AT RISK IF YOU DO NOT KEEP UP REPAYMENTS ON A MORTGAGE OR OTHER LOAN SECURED ON IT.**

**\* ALL MEASUREMENTS STATED ARE APPROXIMATE.**

Please note that none of the apparatus, equipment, whether gas or electrical have been tested and that we cannot verify that they are in full working order. We have done our utmost to provide fair, decent and honest information, we will not accept liability for any errors regarding measurements, council tax band, tenure etc, as they are for your general use only and not to be relied upon. We advise that you make your own enquiries. Should a purchaser require inspections or quotes for works on a property due to survey results, although we are only too pleased to recommend firms, we will not be held responsible for any works carried out before or after completion, or works not detected by the firms in question, they are only recommendations and have no connection with Bettles, Miles & Holland