



## Almeric Road, SW11

£675,000

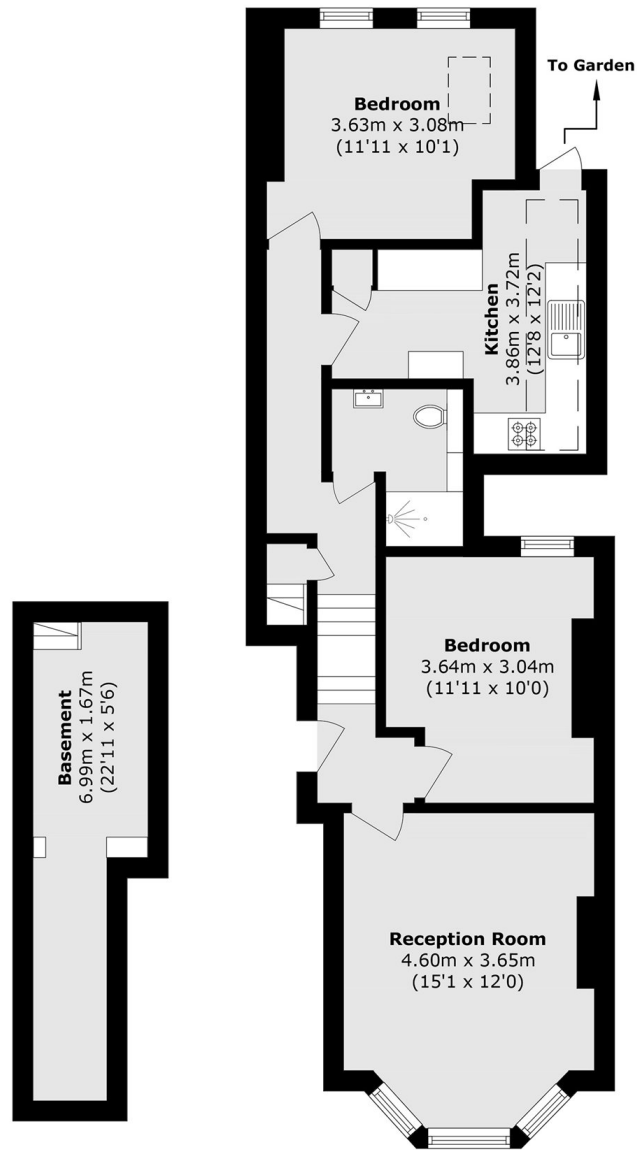
Located 'Between the Commons', this two double bedroom ground floor flat, offers a family bathroom, separate reception room and a kitchen featuring skylight windows. The property also benefits from having a long lease, a cellar and low maintenance garden.

Almeric Road is ideally situated for all the popular amenities located on Northcote Road, Battersea Rise itself and St. John's Road. The green open spaces of both Wandsworth and Clapham Commons are close by. Clapham Junction station is a short stroll away.

### Features

- Two Bedrooms
- Basement
- Long Lease
- Secluded Garden
- Period Features
- Between the Commons

# Almeric Road, London, SW11



**Basement**

**Ground Floor**

Total area (approx.): 71.7 sq. m (771.7 sq. ft)