

Property ref: 175470



Watlington Street, Reading, RG1 4RQ

£1,350 PCM



A two double bedroom split level maisonette, ideally located in Reading town centre and just a stones throw from Royal Berkshire Hospital. The

https://v4.salesandlettings.online/pls/haslamss/e_agent_data.details_sheet_p

- Split level maisonette

property is offered unfurnished and benefits from gas central heating, a large kitchen with appliances, bathroom with seperate WC and permit parking.

Reading Borough Council tax band B.

Broadband/Mobile Info: Connections available. For an indication of specific speeds and supply of Broadband and Mobile, we advise applicants go to the Ofcom website Broadband and Mobile Coverage Checker.

Available 15/09/2026

*Fees For Assured Periodic Tenancies: when you rent a property from us you will be required to pay a sum equivalent to one weeks' rent for a holding deposit. Upon successful application, this amount will be off set against your first months' rent. You will also be required to pay a security deposit equivalent to 5 weeks' rent which will be held and protected in line with Deposit legislation. For more information about our fees please visit: www.haslams.net
Fees for all other tenancies (Non Housing Act Tenancies / Company Lets): when you rent a property from us we will charge you a one-off fee per property. This charge is the equivalent of 15 days of the monthly rental charge (+VAT) with a minimum fee of £450 (inc.VAT) up to a maximum of £650 (inc.VAT). Other fees may apply depending on your circumstances.

0118 960 1055

lettings@haslams.net www.haslams.net

Haslams Estate Agents Ltd, 159 Friar Street, Reading, Berkshire, RG1 1HE

- Two large double bedrooms
- Gas central heating; Double glazed windows
- Permit parking; Unfurnished
- Large kitchen with appliances
- EPC rating E; Managed by HASLAMs

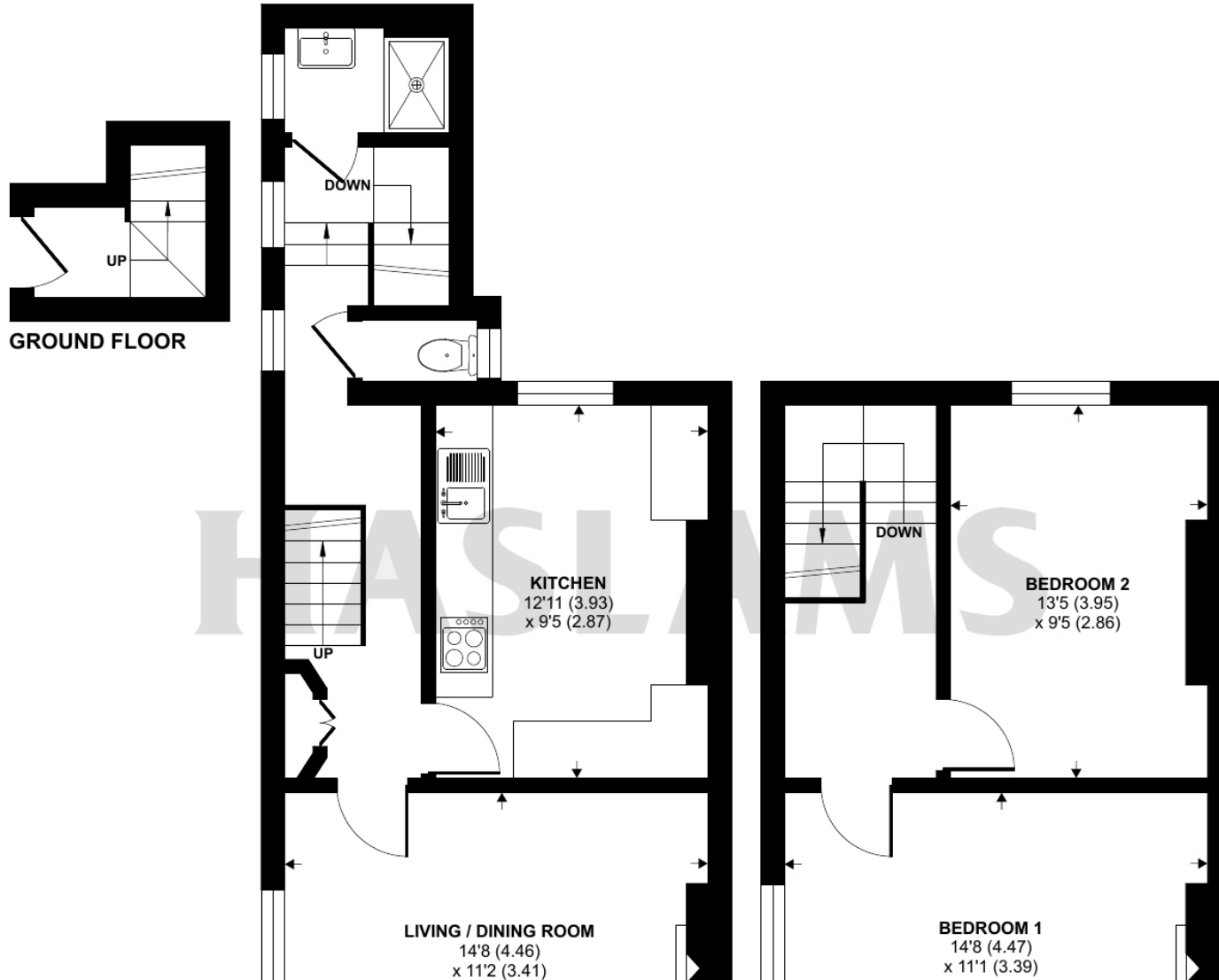


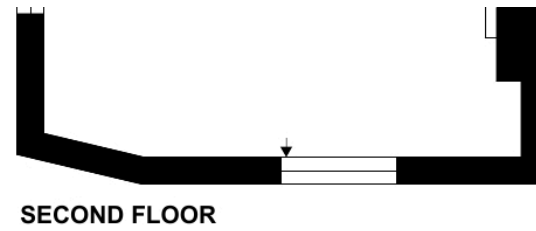
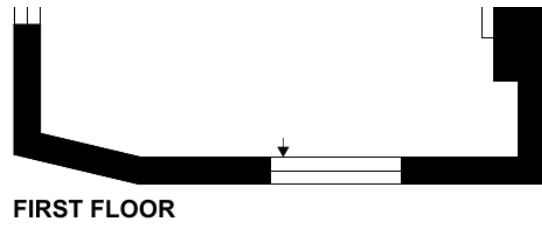


Watlington Street, Reading, RG1

Approximate Area = 817 sq ft / 75.9 sq m

For identification only - Not to scale





Floor plan produced in accordance with RICS Property Measurement 2nd Edition, Incorporating International Property Measurement Standards (IPMS2 Residential). © n7checom 2025. Produced for Haslams. REF: 1354908