



2 Elm Drive

Seaforth, Liverpool, L21 4NA

£950

Nestled in the charming area of Elm Drive, Seaforth, Liverpool, this end-terrace house offers a delightful blend of character and modern living. Spanning an impressive 1,464 square feet, the property boasts two spacious reception rooms, perfect for both relaxation and entertaining. The kitchen/diner is a highlight, featuring contemporary wall and base units, an electric oven, and a gas hob, all complemented by tiled flooring and a feature fireplace.

Upstairs, you will find four well-proportioned bedrooms, each carpeted and filled with natural light from the UPVC double-glazed windows. The newly bathroom includes a bath with a shower overhead, ensuring convenience for the whole family. Additionally, a large loft area provides extra space for storage catering to your needs.

The property benefits from a combination gas central heating system and is fully double glazed, ensuring warmth and energy efficiency.

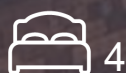
This unfurnished home is available late January, making it an ideal choice for those looking to settle in a vibrant community. Don't miss the opportunity to make this lovely house your new home.

Viewing is recommended to appreciate all that it offers.

Viewing

Please contact our Michael Moon Office on 0151 924 1000 if you wish to arrange a viewing appointment for this property or require further information.

- End Terrace House
- Unfurnished
- Four Bedroom
- On Street Parking
- Available End January
- Two Reception Rooms
- Viewing Recommended
- Council Tax Band A



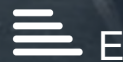
4



1

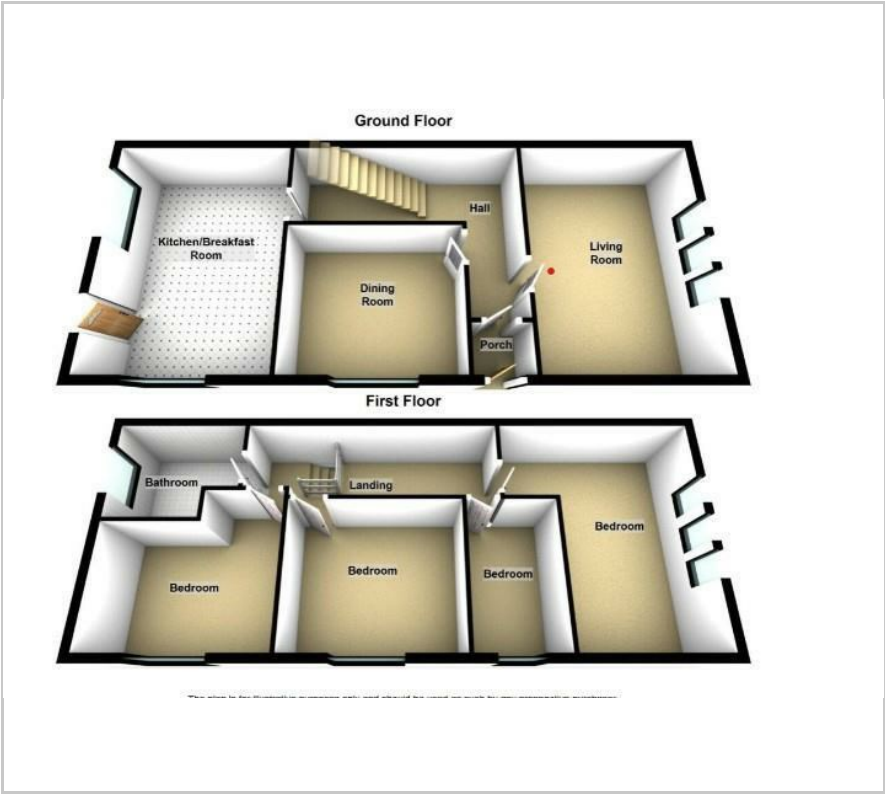


2

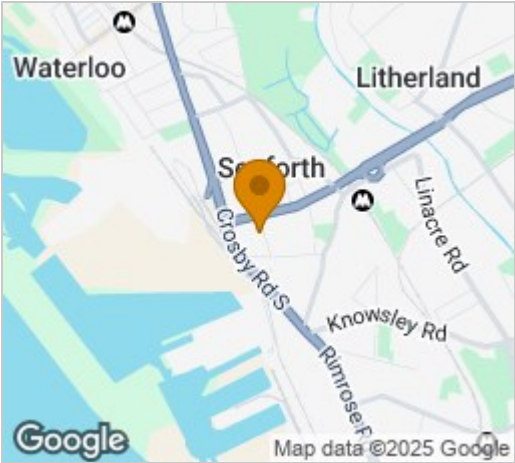


E

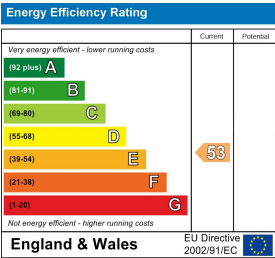
Floor Plan



Area Map



Energy Efficiency Graph



These particulars, whilst believed to be accurate are set out as a general outline only for guidance and do not constitute any part of an offer or contract. Intending purchasers should not rely on them as statements of representation of fact, but must satisfy themselves by inspection or otherwise as to their accuracy. No person in this firms employment has the authority to make or give any representation or warranty in respect of the property.