



Tufton Street, SW1P

£2,000,000

Dexters



Tufton Street, SW1P

Rare to the market, this modern four bedroom house forms part of the sought after Millicent Court development. The property benefits from two underground parking spaces and an on-site caretaker, offering secure and convenient contemporary living.

Set over four floors, the house is well laid out for entertaining and family life, with good sized rooms, a patio, balcony and access to the communal garden. There are four bedrooms with three bathrooms two of which are en suite, a large reception room on the first floor and separate kitchen and dining room on the ground floor.

Tufton Street is in the heart of Westminster, located within easy reach of St James's Park and Victoria. The area includes some of London's most iconic landmarks and the many amenities, restaurants and shops of Victoria and Westminster.

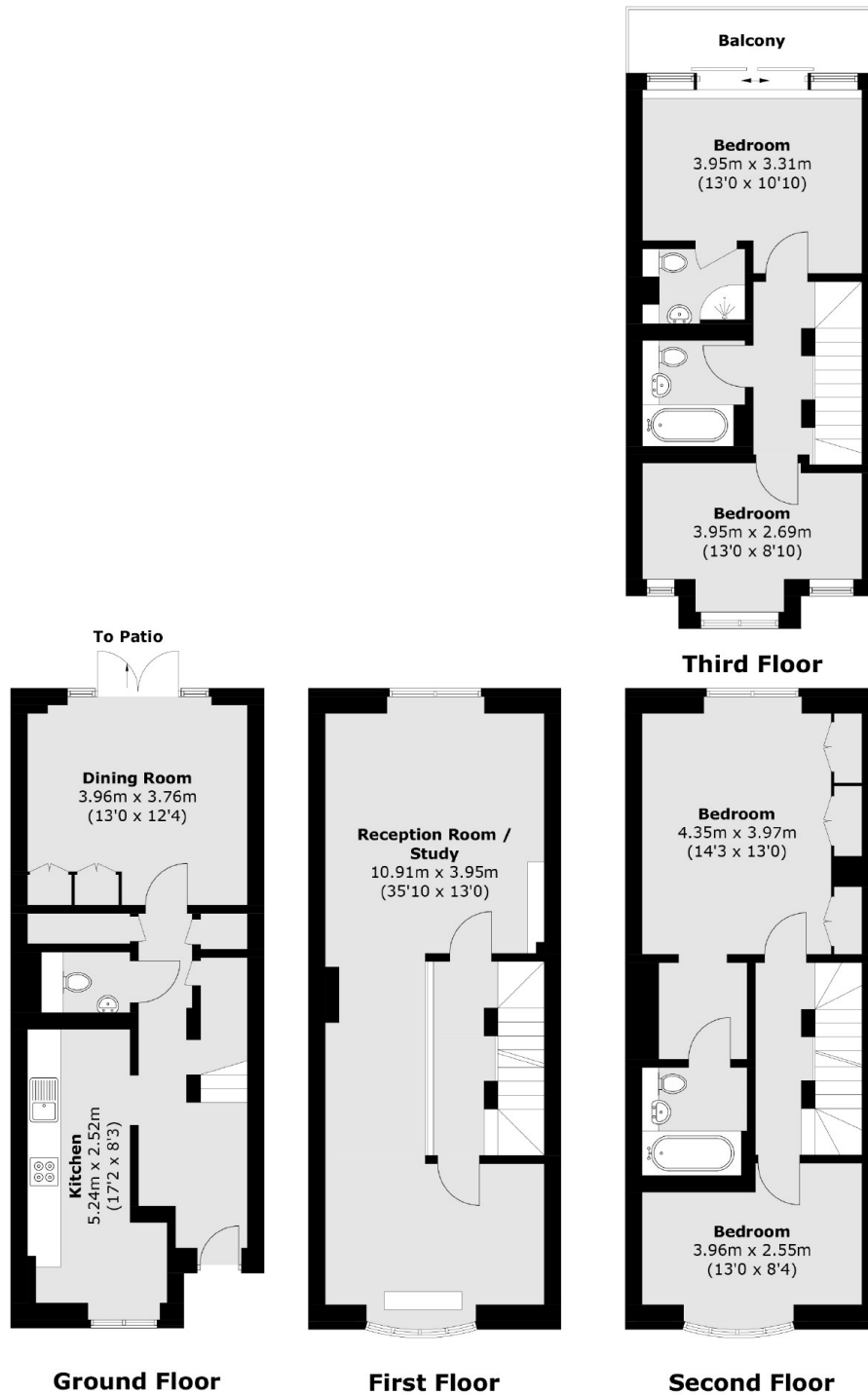
Tufton street is ideally located for transport from Westminster, Victoria and St James's Park. Waterloo and Charing Cross are also within easy reach.

Features

- Caretaker
- Balcony
- Patio
- Underground Parking
- Four Bedrooms
- Leasehold



Tufton Street, London, SW1P



Total area (approx.): 165.5 sq. m (1,781.4 sq. ft)
Balcony: 5.1 sq. m (54.9 sq. ft)