



Guide Price

£140,000

Freehold

2x  2x  1x 

**Sturry Court Mews,
Sturry Hill, Sturry,
Canterbury, Kent, CT2**

Wards
Helping you move forwards



Main features

- Shower rooms on both floors
- Stunning countryside views to the rear
- Residents must be over 55 or of state pension age
- On site manager and 24 hour emergency care line response system
- Close to local shops, train station and bus routes

Accommodation

GROUND FLOOR

Entrance Hallway
 Lounge/Diner: 22'0 x 9'9 (6.71m x 2.97m)
 Kitchen: 9'8 x 6'0 (2.95m x 1.83m)
 Shower Room: 6'1 x 5'3 (1.86m x 1.60m)

FIRST FLOOR

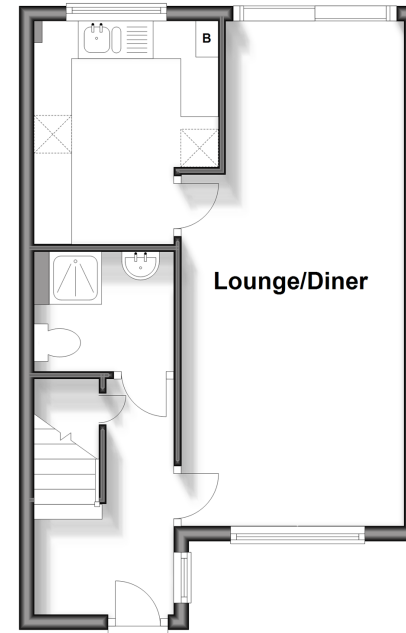
Landing
 Bedroom 1: 13'1 x 8'3 (3.99m x 2.52m)
 Bedroom 2: 11'4 x 9'9 (3.46m x 2.97m)
 Shower Room: 8'0 x 6'2 (2.44m x 1.88m)

OUTSIDE

Rear Garden

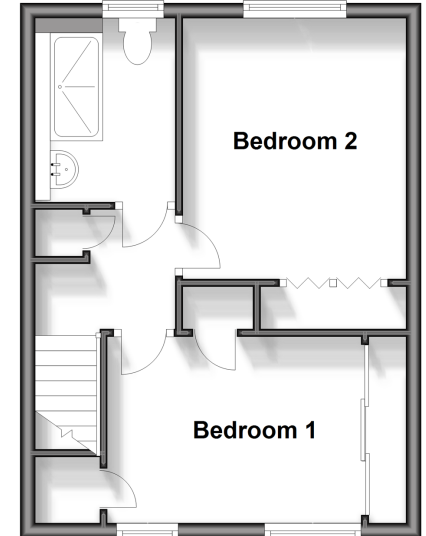
Ground Floor

Approx. 35.4 sq. metres (380.7 sq. feet)



First Floor

Approx. 33.2 sq. metres (357.1 sq. feet)



Call Canterbury - 01227 766669 ■ wardsof Kent.co.uk

■ Legal advice should be taken to verify fixtures/fittings, planning, alterations and/or lease details

■ Appliances & services are untested, dimensions are approximate and floor plans are not to scale



10348595/20251205/TG/MIA