



18 Ranelagh Road, Christchurch BH23 5DY

£599,950

Mitchells

1963 — TODAY



Ranelagh Road, Christchurch

Situated within sight and sound of sea and right by the path that takes you to the beach, this super detached house of about 1210sqft is also just a short stroll from the bustling high street. Carefully maintained and lovingly used as a holiday home for many years, it is a perfect lock and leave but also suited to family/retirement living.



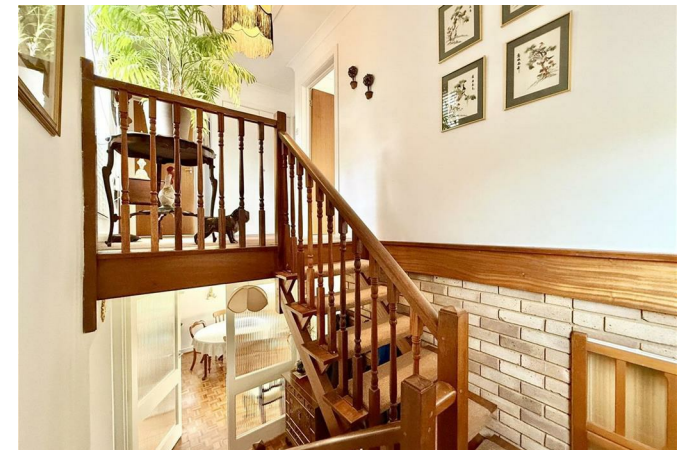
The Property

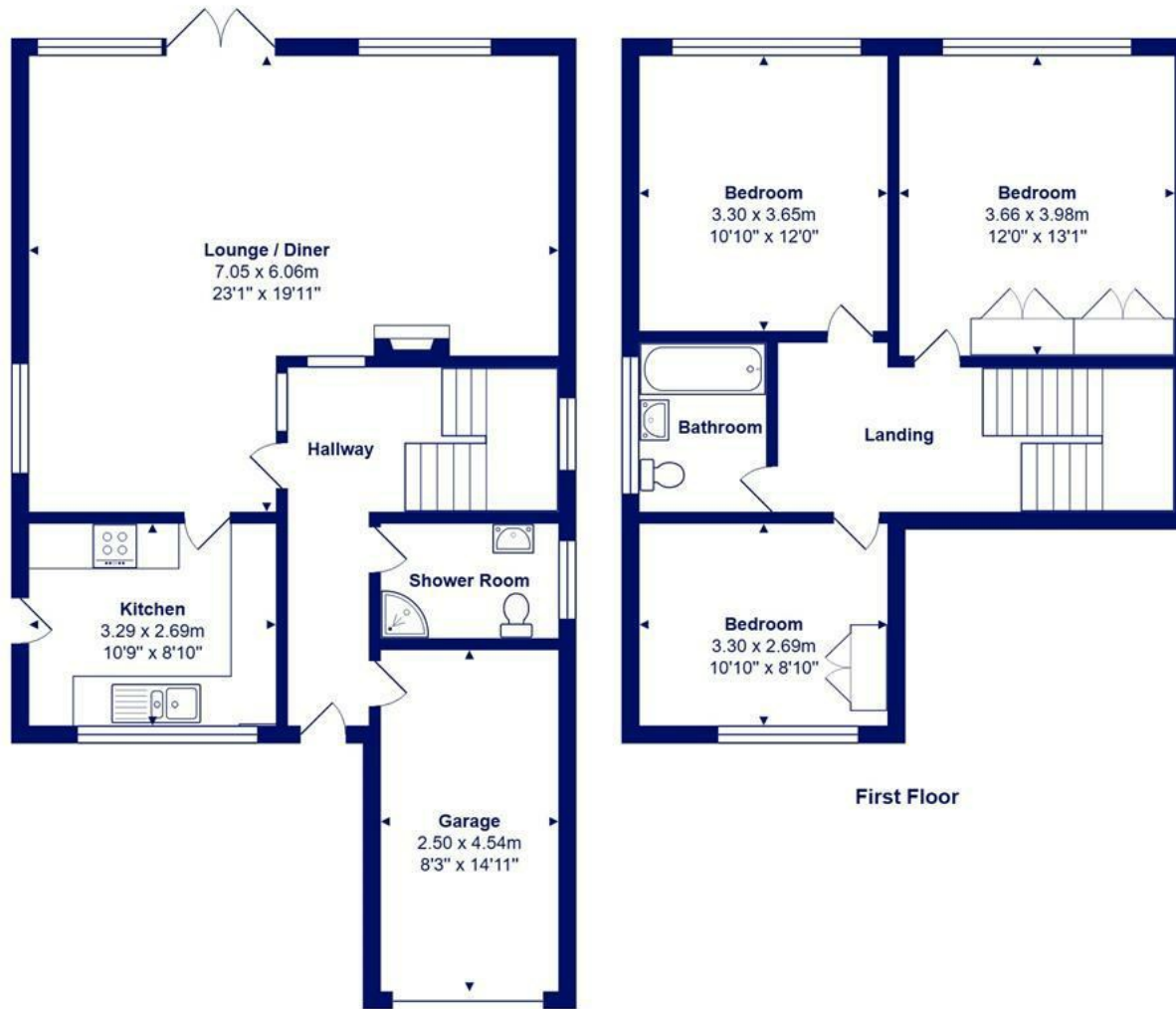
- Spacious detached house of about 1210sqft offered for sale with no forward chain
- Three generous first floor bedrooms and a family bathroom
- Ground floor shower room
- Lovely reception hall with open tread staircase and part galleried landing
- Large L shape sitting/dining room with fireplace and access to the garden
- Well fitted kitchen with outlook to the front
- Sunny and easily maintained rear garden with garage and off road parking
- Fantastic location with the cliff top, beach, and village centre right on your doorstep
- Quick possession available





Location





Ground Floor

First Floor

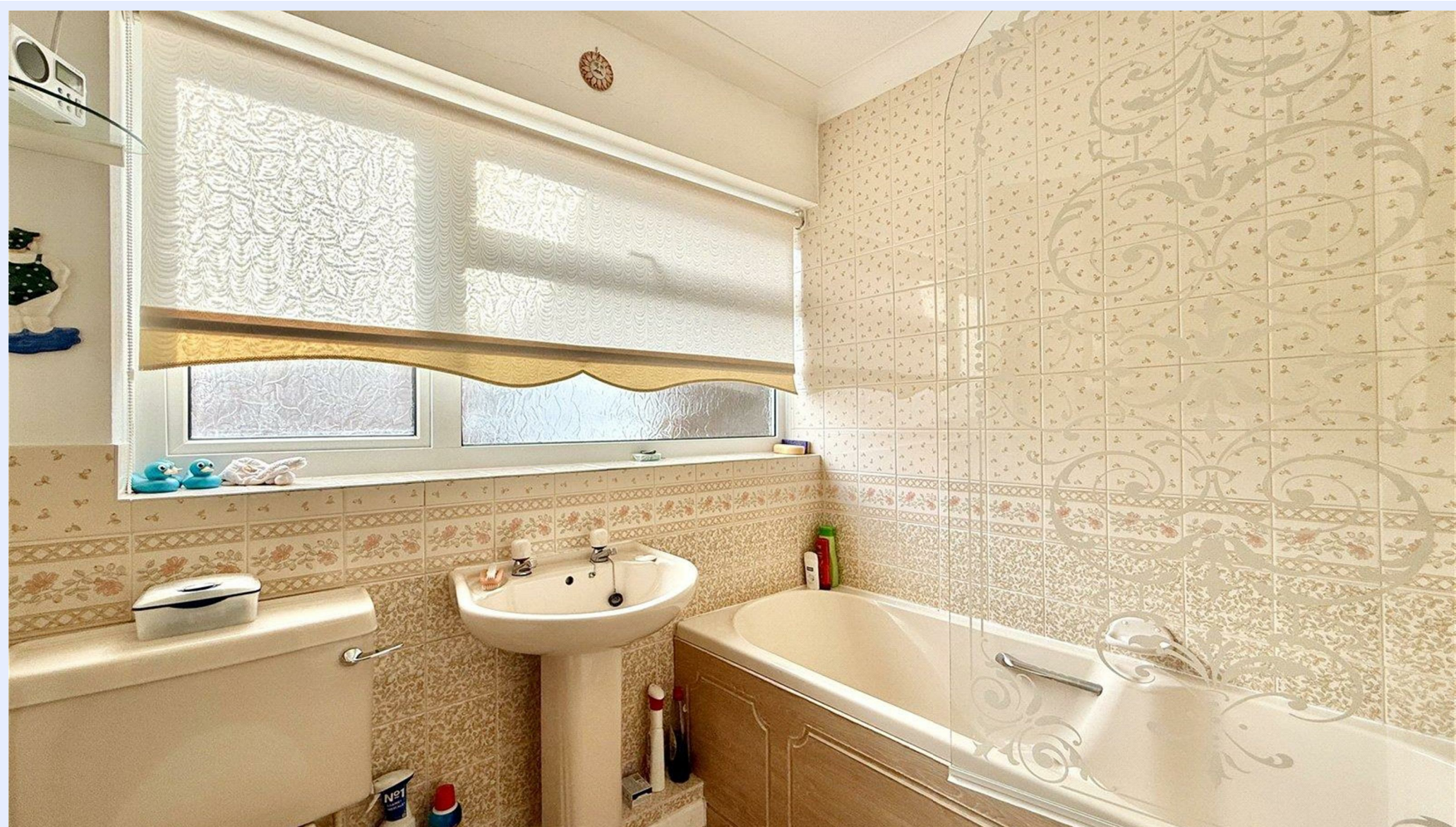


Total Area: 112.4 m² ... 1210 ft² (excluding garage)

All measurements are approximate and for display purposes only







www.mitchells.uk.com
Highcliffe@mitchells.uk.com
01425 272206

Highcliffe
284 Lymington Road
Highcliffe
Christchurch
BH23 5ET

