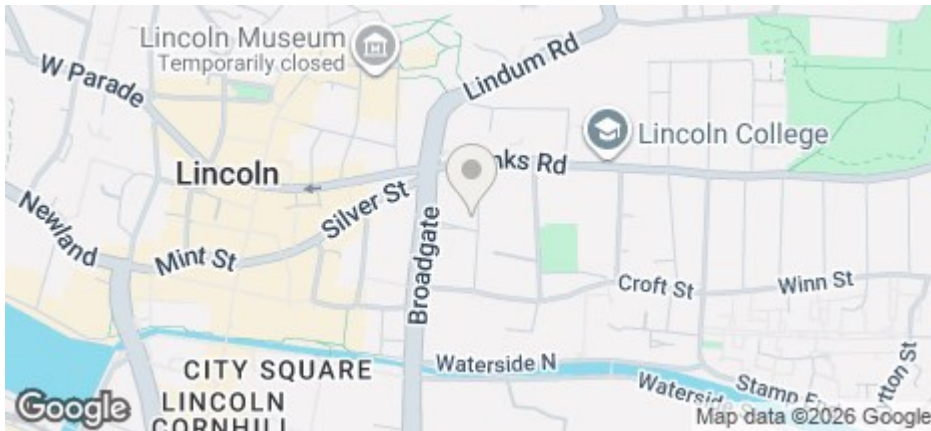




## 8 Unity Square, Lincoln, Lincs, LN2 5AW

£112 Per Week

COUNCIL TAX BAND: D



- Huge student house across 3 floors
- \*FREE\* Fresher's In The City wristbands
- Good sized bedrooms
- Price displayed is per person
- Council Tax Band D
- SUPERBULL & UNION ENTRY FOR THE YEAR!
- Large TV, Juke Box and Table Football in Common Area
- Two Kitchens - dishwasher & tumble dryer included
- Close to University and the City Centre
- Available for 26/27

For an indication of specific broadband speeds and supply, or coverage in the area, we suggest you visit: <https://checker.ofcom.org.uk/en-gb/broadband-coverage>

For an indication of specific mobile phone speeds and supply, or coverage in the area, we recommend you visit: <https://checker.ofcom.org.uk/en-gb/mobile-coverage#pc=LN12PR&uprn=10013808803>

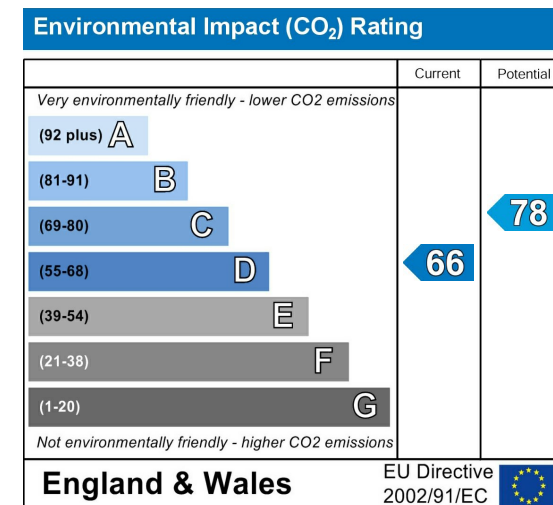
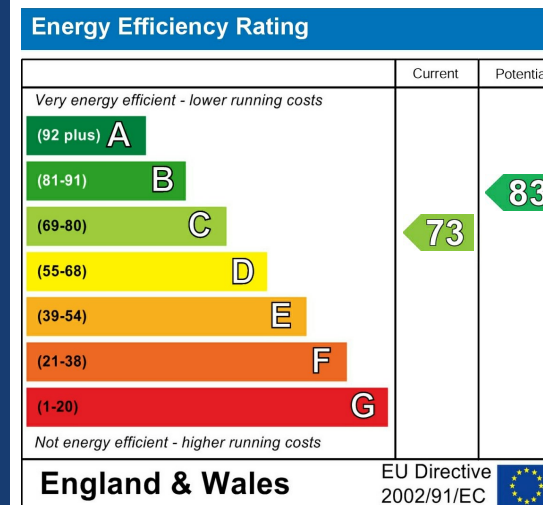
Unless otherwise stated, there is no known flooding history at this property. To check the flood risk of the area visit: <https://check-long-term-flood-risk.service.gov.uk/postcode>



| Number of tenants per property | Gas Allowance (Kwh) | Electric Allowance (Kwh)* | Water Allowance (m3) |
|--------------------------------|---------------------|---------------------------|----------------------|
| 1                              | 10000               | 3000                      | 125                  |
| 2                              | 13000               | 3400                      | 130                  |
| 3                              | 16000               | 4000                      | 165                  |
| 4                              | 20000               | 5000                      | 190                  |
| 5                              | 25000               | 6000                      | 215                  |
| 6                              | 30000               | 7000                      | 240                  |
| 7                              | 34000               | 8000                      | 270                  |
| 8                              | 38000               | 9000                      | 290                  |
| 9                              | 41000               | 10000                     | 310                  |
| 10                             | 44000               | 11000                     | 330                  |

If there is no gas in the property (electric heating and hot water) the Electric Allowance Kwh is doubled.

The chart details the maximum usage allowance of gas, water, and electricity for a 50-week tenancy in accordance with the number of tenants for the property (should the tenancy term vary from 50 weeks, the allowance will be apportioned accordingly to cover the term of the tenancy). Should these figures be exceeded the Landlord reserves the right to levy a charge to cover the cost for the additional usage. It is the Tenants responsibility to monitor their own usage.



Spacious accommodation, in the heart of the city, close to the High Street shops and restaurants. Huge student house across 3 floors, two kitchens & tumble dryer included. Large TV, Juke Box and Table Football in Common Area.

Amazing perks available:

- FREE Superbull entry all year
- FREE Union entry all year
- FREE Fresher's in the City wristbands for Fresher's week!
- VIP Superbull parties on request

Available for groups of 8, 9, 10, 11 or 12!

Gas central heating. Solar powered electric. Up to 2 parking permits available through City of Lincoln Council permit scheme for a fee. Large driveway for off-street parking.

Flexible contract lengths to suit you

\*Price displayed is as per person per week\*

The deposit payable on the first day of your tenancy is just **\*\*£200.00\*\*** per person along with the first months' rent.

The property comes furnished and includes utilities and associated building running costs, including TV licence and Broadband. Utilities are subject to a fair usage policy as detailed in the attached brochure and the Tenancy Agreement.

The stated rent excludes Council Tax. Full time students may be exempt (subject to Council approval).

Don't miss out on this great property. Contact our friendly team at Cloud Lettings today to arrange your viewing or book a slot online for a time convenient to you!

See downloadable brochure for more details.

Call - 01522 802020  
email - [info@cloudlettings.co.uk](mailto:info@cloudlettings.co.uk)  
WhatsApp - 07908 557770

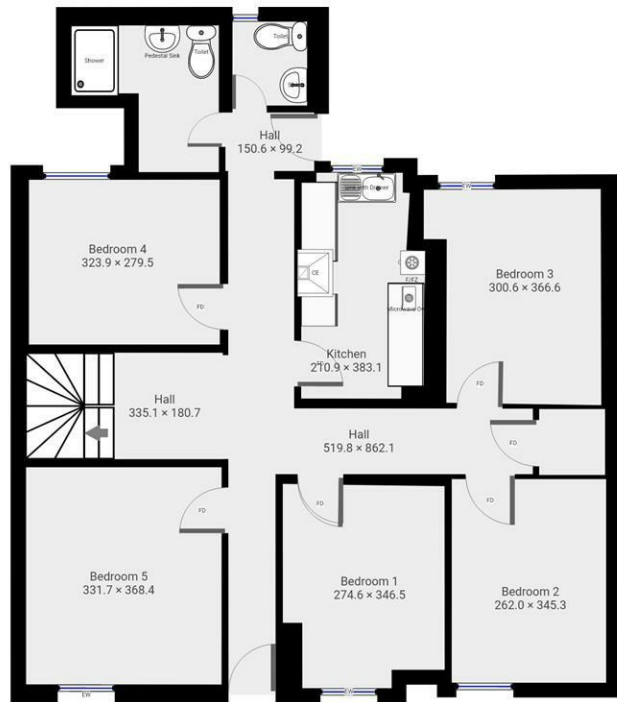
Cloud Lettings are a member of the Tenancy Deposit Scheme, ARLA, The Property Ombudsman, and are part of the Propertymark Client Money Protection scheme. Cloud Lettings are also an Associate Agent of the City of Lincoln Trusted Landlord Scheme.

For further details of all tenancy fees, please see our website here:  
<http://www.cloudlettings.co.uk/about>

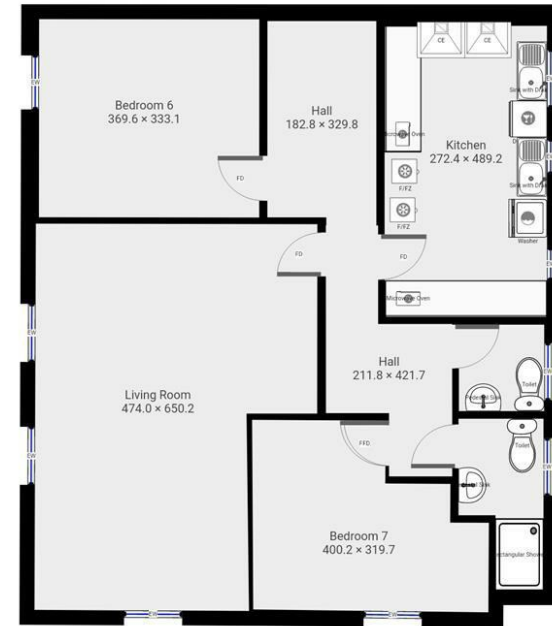
Any information collected from you will be processed in accordance with the General Data Protection Regulation. Full details of how Cloud Lettings Ltd process your information can be found on our website here: <http://www.cloudlettings.co.uk/about-cloud-lettings/privacy-policy/>.

Terms and conditions apply. Contact the office for more information.





Floor plan measurements are approximate and for illustrative purposes only. While we do not doubt the floor plans accuracy, we make no guarantee, warranty or representation as to the accuracy and completeness of the floor plan. You or your advisors should conduct a careful, independent investigation of the property to determine to your satisfaction as to the suitability of the property for your special requirements.



Floor plan measurements are approximate and for illustrative purposes only. While we do not doubt the floor plans accuracy, we make no guarantee, warranty or representation as to the accuracy and completeness of the floor plan. You or your advisors should conduct a careful, independent investigation of the property to determine to your satisfaction as to the suitability of the property for your special requirements.

Room size measurements are achieved by measuring between internal walls.

Where sloped ceilings are present, room size is measured where the height is a minimum of 1.5m