

Jefferson House

West Drayton • Middlesex • UB7 9FL

PCM: £1,650 PCM



coopers
est 1986

A modern and contemporary luxury apartment situated in a private development with concierge and gymnasium. Located within a short walk to West Drayton Train station and high street. Heathrow, The M4 and the M25 are just a few minutes drive.

Accommodation; Large lounge with doors leading to private patio area, Fully fitted kitchen with appliances. Benefits; Double glazing, Entry-phone system, Parking space, Beautiful communal gardens.

FURNISHED

Gymnasium

Concierge

Balcony

Fully Fitted Kitchen

Modern Development

Communal Gardens

Walk To West Drayton High Street

Close To High Street

Close To Stockley Business Park

Council Tax Band C

Available Date

7th February 2026

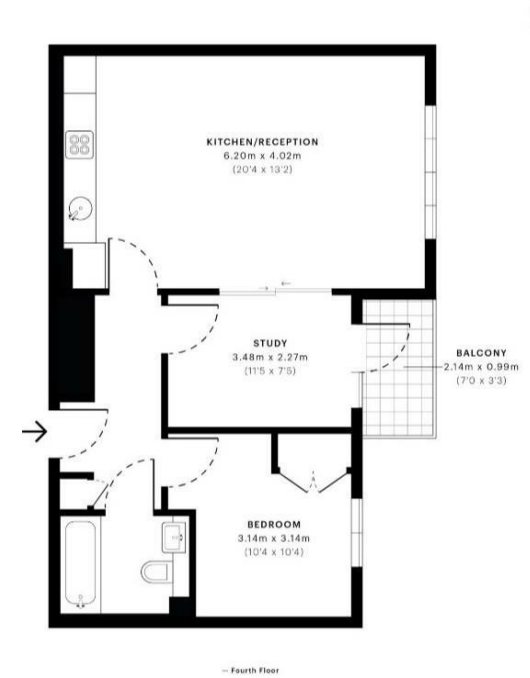


Jefferson House, UB7

CAPTURE DATE: 26/10/2020 LASER SCAN POINTS: 100,000,000

GROSS INTERNAL AREA

51.98 sqm / 559.51 sqft



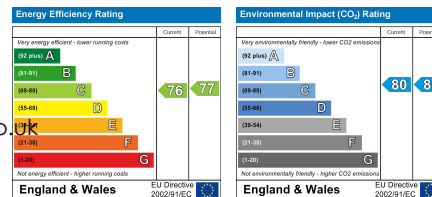
coopers
est 1986

01895 230 103

109 Hillingdon Hill, Hillingdon Village,
Middlesex, UB10 0JQ

propertymanagement@coopersresidential.co.uk

CoopersResidential.co.uk



Important Notice: These particulars, whilst believed to be accurate are set out as a general outline only for guidance and do not constitute any part of an offer or contract. Intending purchasers should not rely on them as statements or representation of fact, but must satisfy themselves by inspection or otherwise has the authority to make or give any representation or warranty in respect of the property.