



Let **UK** Home

3 Bedrooms

House

Located in London

£2,550 Per Month



info@letukhome.co.uk

<https://www.letukhome.co.uk/>

01795 358 886



Gillison Walk London

SE16 4SS



Let UK Home are excited to present this two-storey three-bedroom property within the Keetons Estate development at Gillison Walk, London SE16 spans a total floor area of 90 square metres.

On the ground floor sits an open-plan fitted kitchen and a large reception room that opens onto a private garden, alongside a downstairs WC and a staircase leading to the first floor. Upstairs, there are three separate bedrooms plus a full family bathroom positioned on the landing next to the stairs.

Keetons Estate offers comprehensive everyday amenities within walking distance. Major 24-hour supermarkets, post offices and convenience stores are close by for daily shopping, while Southwark Park features free tennis courts, tree-lined paths and open lawns perfect for jogging, dog walks and family picnics. Residents can also benefit from a Pure Gym, local community centre and a diverse range of dining spots, including Korean BBQ, Japanese ramen and Vietnamese restaurants, catering to all leisure and lifestyle needs.

Boasting exceptional transport connections, the property is a short walk from Bermondsey Underground Station on the Jubilee Line, granting fast access to Canary Wharf, Bond Street, King's Cross and Heathrow Airport. Multiple bus routes (188, 47, 381) stop directly outside the estate, linking seamlessly to London Bridge and Canada Water. Commuting across central London for work or leisure could not be more efficient.

The area is packed with highly-rated schools covering all age groups. Top local

Gillison Walk London

£2,550 Per Month

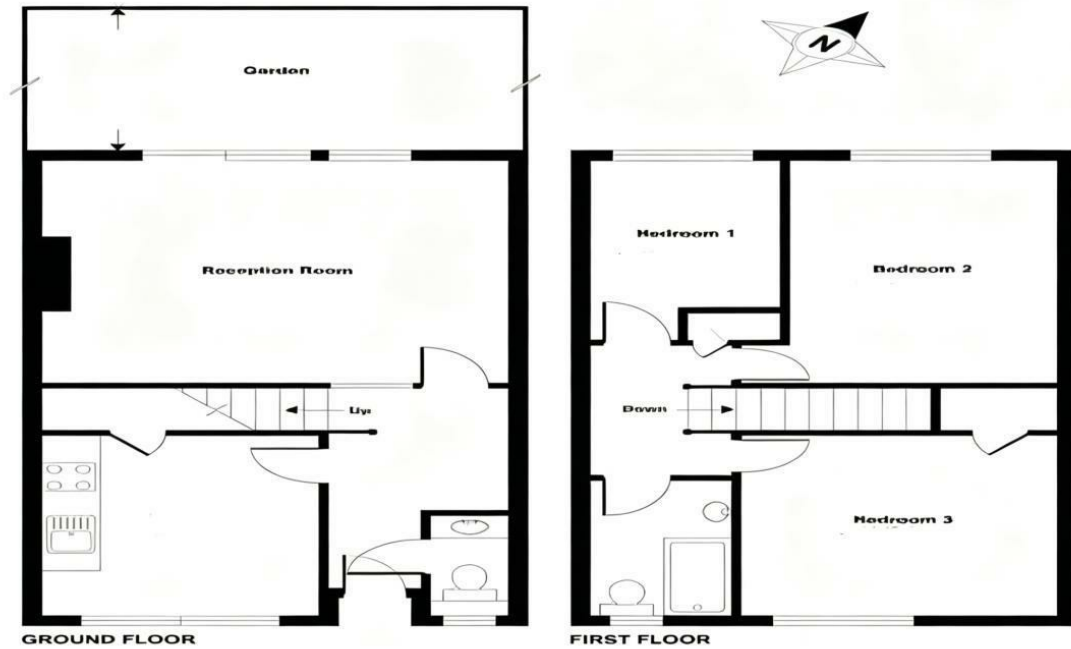
- House
- Close to Local Shops
- Bermondsey
- EPC Rating: D



- Parking Available
- Close to Tube Station
- Fast Access to Canary Wharf, Bond Street, King's Cross and Heathrow Airport
- Virtual Tour Available



Gillison Walk, London, SE16



Total floor area

90 square metres



Let **UK** Home

3F 2 Eastbourne Terrace
Paddington
London
W2 6LG

01795 358 886

info@letukhome.co.uk

Council Tax Band: D

Local Authority:

Agents Note: Whilst every care has been taken to prepare these particulars, they are for guidance purposes only. All measurements are approximate and are for general guidance purposes only and whilst every care has been taken to ensure their accuracy, they should not be relied upon and potential buyers/tenants are advised to recheck the measurements.

Energy Efficiency Rating		Current	Potential
Very energy efficient - lower running costs			
(92 plus) A			
(81-91) B			
(69-80) C			82
(55-68) D		64	
(39-54) E			
(21-38) F			
(1-20) G			
Not energy efficient - higher running costs			
England & Wales	EU Directive 2002/91/EC		

<https://www.letukhome.co.uk/>