



5 Glebe House, Slippers Place, Slippers Place  
London

£450,000

OLIVER *OJ* JACQUES  
EST. 1986

# 5 Glebe House, Slippers Place

Slippers Place, London

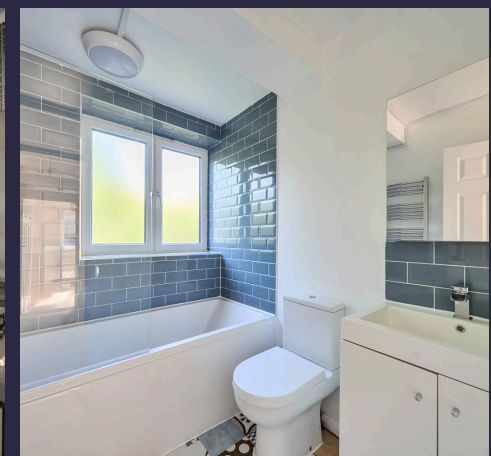
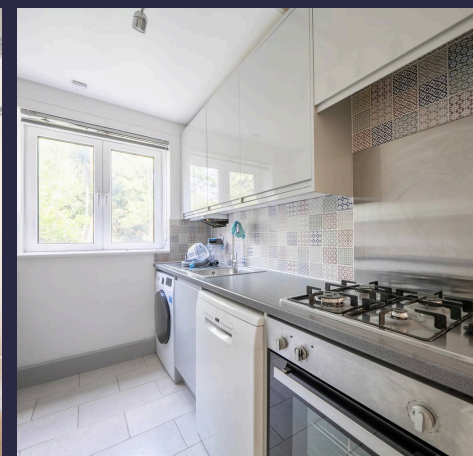
Council Tax band: D

Tenure: Leasehold

EPC Energy Efficiency Rating: C

EPC Environmental Impact Rating: C

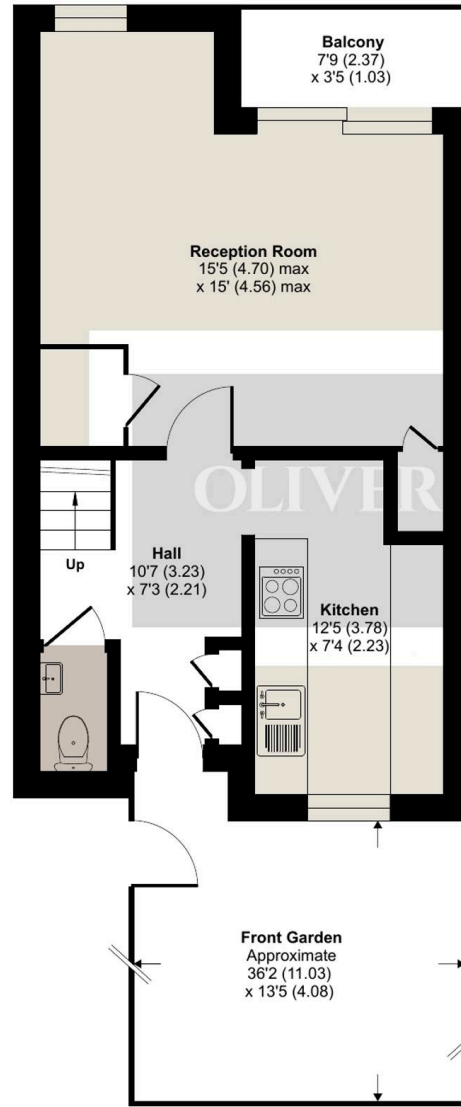
- Chain free
- Split-level maisonette
- Private garden and balcony
- 800+sqft
- 0.3m Bermondsey station
- 0.1m Southwark Park



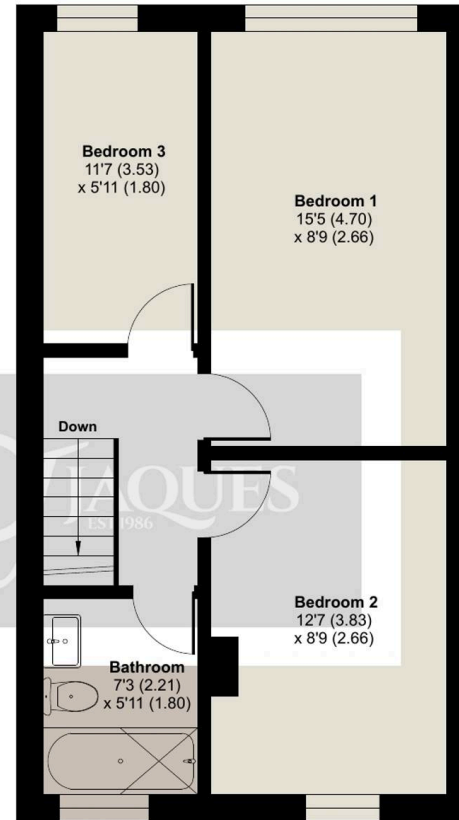
# Slippers Place, London, SE16

Approximate Area = 802 sq ft / 74.5 sq m

For identification only - Not to scale



**GROUND FLOOR**



**FIRST FLOOR**





## Oliver Jaques

Oliver Jaques, 229-231 Lower Road - SE16 2LW

02072315050 • southeast@o-j.co.uk • o-j.co.uk/

Every care has been taken with the preparation of this brochure but it is for general guidance and complete accuracy can't be guaranteed. Prospective purchasers should seek clarification from their solicitor. The mention of any appliances fixtures or fittings does not imply they are in working order.