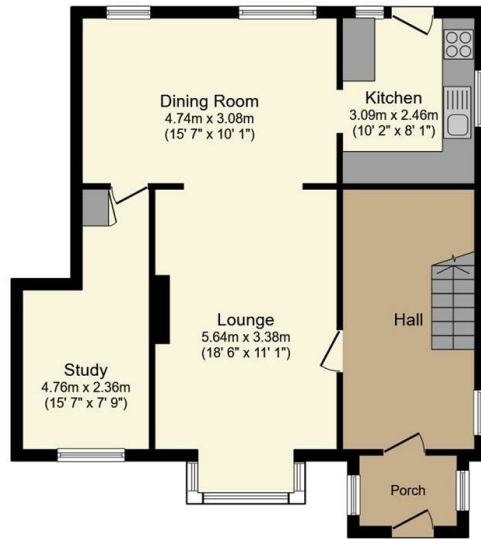




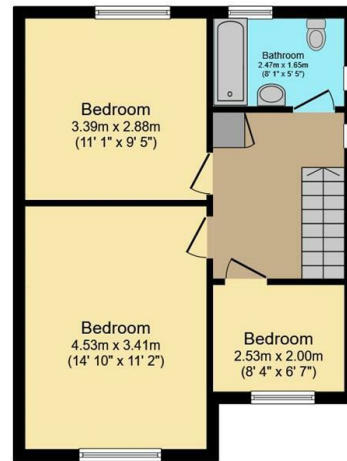
10 Winchester Crescent, Sheffield, S10 4ED

Offers Over £400,000

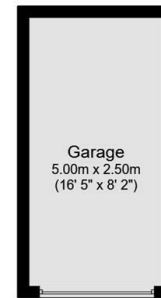
- No onward chain
- Off street parking and a garage
- Quiet location
- Long leasehold
- Detached family home
- South facing rear garden
- Close to stunning countryside
- Over 1,100ft² of floor space
- Three/four bedrooms
- Great schools and parks nearby



Ground Floor



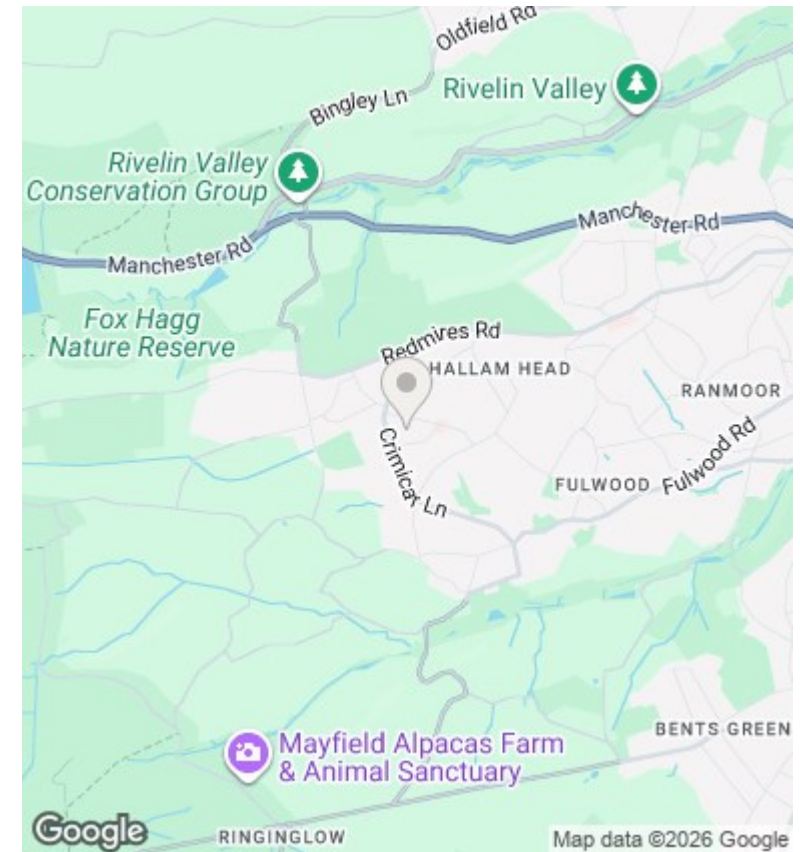
First Floor



Garage

Total floor area: 123.4 sq.m. (1,328 sq.ft.)

This floor plan is for illustrative purposes only. It is not drawn to scale. Any measurements, floor areas (including any total floor area), openings and orientations are approximate. No details are guaranteed, they cannot be relied upon for any purpose and do not form any part of any agreement. No liability is taken for any error, omission or misstatement. A party must rely upon its own inspection(s). Powered by www.Propertybox.io



Directions

Viewings

Viewings by arrangement only. Call 01142 687777 to make an appointment.

Council Tax Band

EPC Rating:

Energy Efficiency Rating		
	Current	Potential
<i>Very energy efficient - lower running costs</i>		
(92 plus) A		
(81-91) B		
(69-80) C		
(55-68) D		
(39-54) E		
(21-38) F		
(1-20) G		
<i>Not energy efficient - higher running costs</i>		
England & Wales	EU Directive 2002/91/EC	