



Fairway Longhill, Elgin IV30 8LE

Offers Over £215,000

ABSM Estate Agents Ltd

www.abands.uk.com | 01343 564123





Fairway, Longhill, near Elgin is a wonderfully characterful detached property set within an impressive garden plot, offering exceptional potential for those ready to modernise and make it their own. Although the home now requires substantial upgrading—most notably new windows, central heating, a kitchen and bathroom—it rewards with generous room sizes, lovely natural light and a warm, welcoming layout. The ground floor includes a porch, dining room, large lounge, bright dining kitchen, hallway, bathroom, double bedroom and a useful rear lobby leading directly into the integral double tandem garage. Upstairs, two further bedrooms and a box room—ideal for conversion into a shower room—provide flexible accommodation. With its charming original features, expansive garden grounds and huge scope to reimagine the space, Fairway represents a rare opportunity to create a truly special home in a peaceful, established setting.

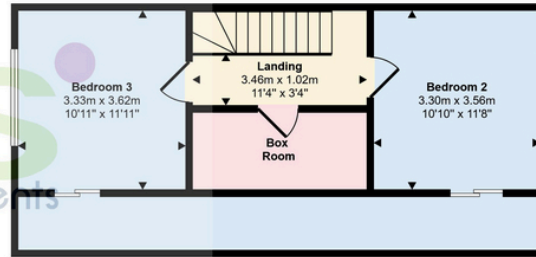
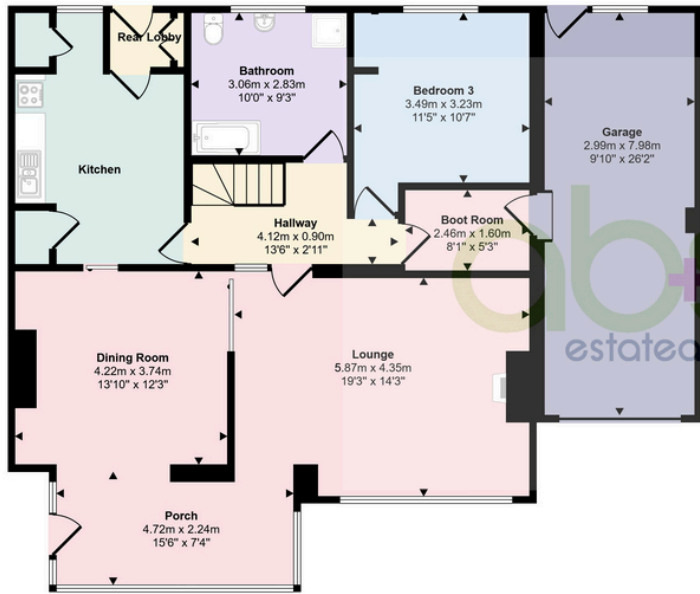
Home Report Value as at March 2026 is £215,000,



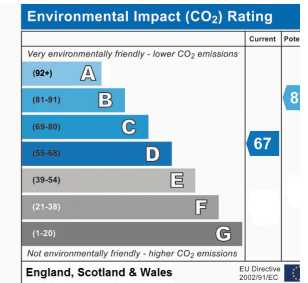
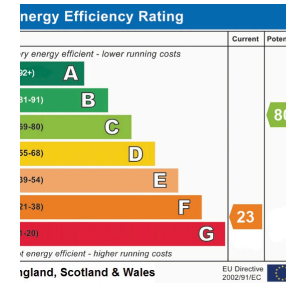




Approx Gross Internal Area
182 sq m / 1954 sq ft



This floorplan is only for illustrative purposes and is not to scale. Measurements of rooms, doors, windows, and any items are approximate and no responsibility is taken for any error, omission or mis-statement. Icons of items such as bathroom suites are representations only and may not look like the real items. Made with Made Snappy 360.



ABSM Estate Agents Ltd

151 High Street, Elgin, IV30 1DX

www.abands.uk.com | 01343 564123