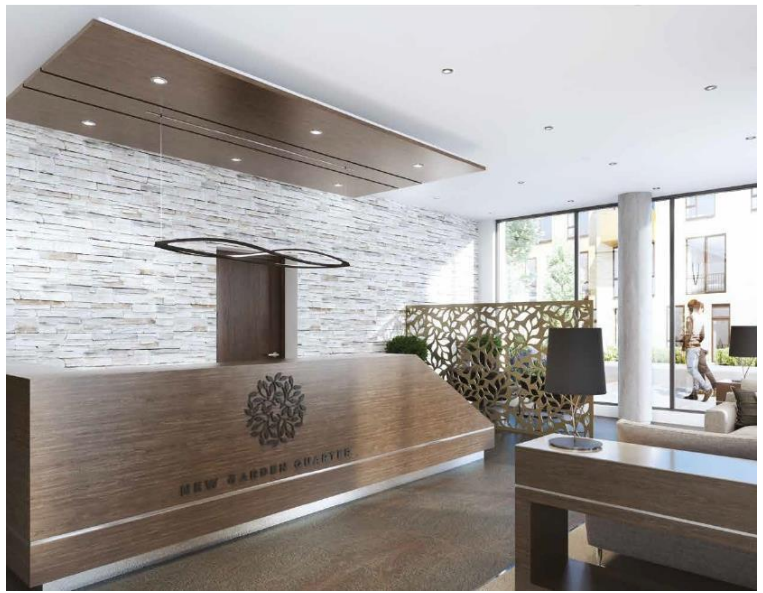




**Forrester Way, London E15**  
Offers In Excess Of £450,000 Leasehold







## Description

Situated in the heart of Stratford's transformative New Garden Quarter, Merchants House represents contemporary urban living at its finest. This well-appointed development combines modern architecture with thoughtfully designed communal spaces, creating a vibrant residential community that captures the energy and ambition of East London's renaissance.

This attractive one-bedroom apartment spans approximately 584 square feet of intelligently designed living space. The open-plan reception and kitchen area provides a generous entertaining space, flowing seamlessly onto a private north-facing balcony with room for outdoor seating. Natural light fills the interior, whilst the contemporary specification maintains the development's high standards throughout. The separate bedroom offers peaceful retreat, complemented by a modern bathroom finished to an excellent standard.

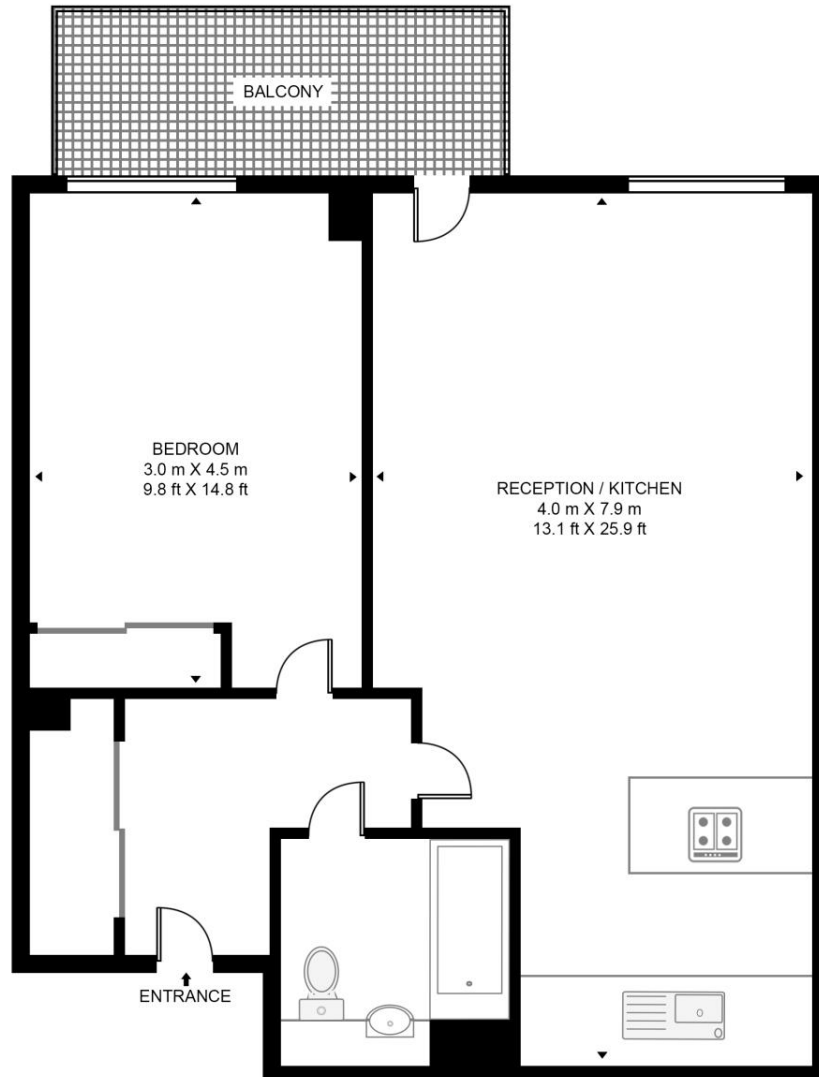
Life at Merchants House extends beyond the apartment itself. Residents benefit from exclusive access to a well-equipped on-site gym, allowing you to maintain your fitness routine without leaving home. The 24-hour concierge service provides security, convenience, and peace of mind, whether receiving deliveries, welcoming guests, or simply enjoying the reassurance of professional building management.

- Spacious one bedroom apartment
- 1st Floor with lift access
- Private North-facing balcony
- Residents' gym
- 24-hour Concierge service
- Stratford transport connections
- Westfield shopping centre nearby
- EPC rating B

# Floorplan

584 sq ft | 54 sq m

**MERCHANTS HOUSE, NEW GARDEN QUARTER, E15**  
APPROXIMATE GROSS INTERNAL FLOOR AREA 584 SQ.FT (54.3 SQ.M)



FIRST FLOOR



This floor plan has been defined by the RICS Code of Measurement. This floor plan and all others are for approximate representative purposes only and upon usage is agreed to as such by the client.

WWW: [hdvirtualart.com](http://hdvirtualart.com) | TEL: 0203.974.1567 | EMAIL: [info@hdvirtualart.com](mailto:info@hdvirtualart.com)

Stratford  
5 Station Street,  
London E15 1DA  
+4420 3147 1500  
[Lettingsstratford@eu.jll.com](mailto:Lettingsstratford@eu.jll.com)

*Urban living, your way.*

[jll.co.uk/residential](http://jll.co.uk/residential)

© 2019 Jones Lang LaSalle IP, Inc. All rights reserved. All information contained herein is from sources deemed reliable; however, no representation or warranty is made to the accuracy thereof.

