



## Nine Elms Lane, SW8

£4,200 Per calendar month

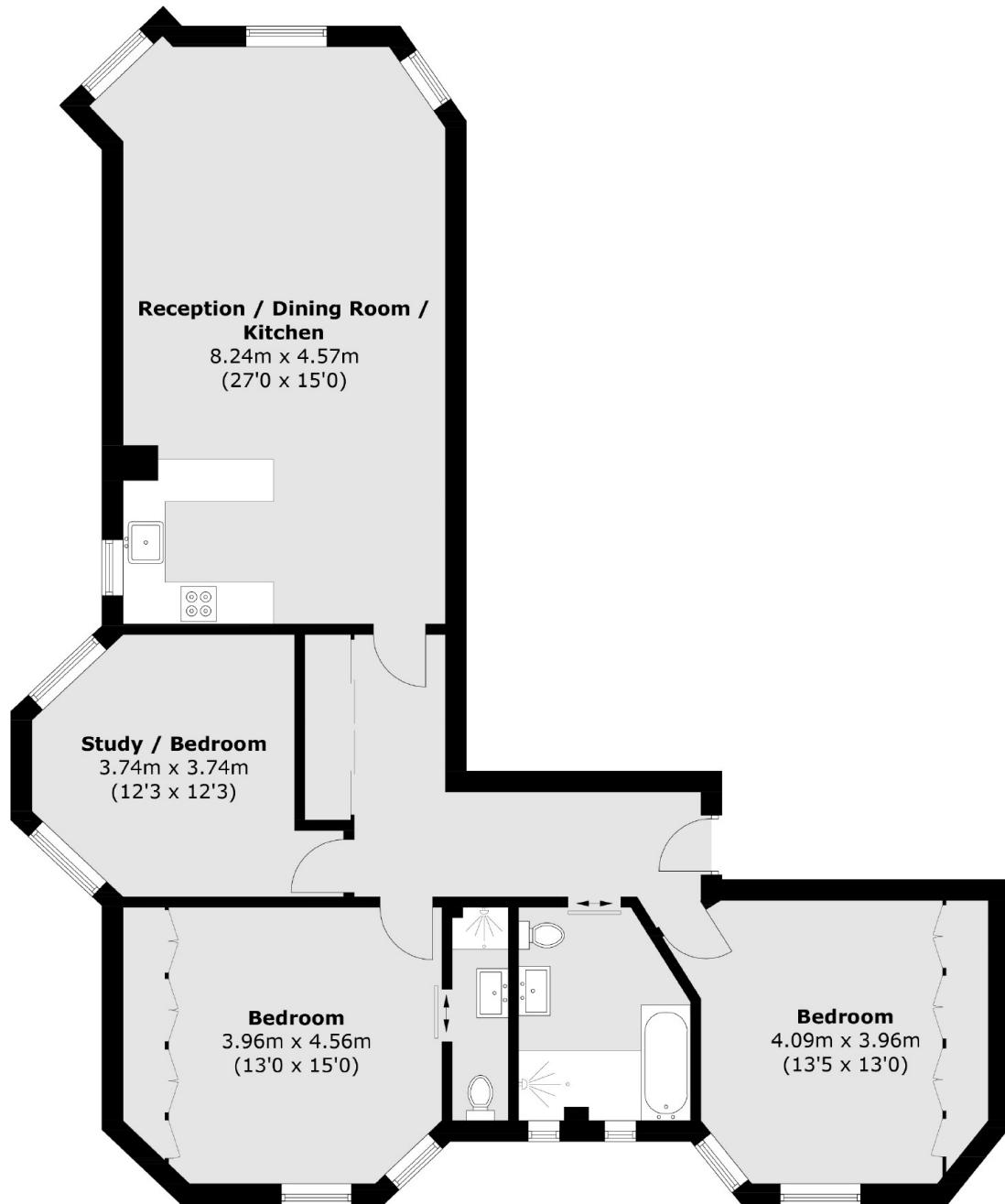
Arranged on the fifth floor of this sought after development is this newly refurbished three bedroom apartment. Boasting a bright and spacious open plan kitchen and reception room with superb 180 degree views of The Thames. Secure allocated parking by separate negotiation. Heating & Hot Water Included in the rent.

Riverside Court is a short walk to Battersea Power Station, Battersea Park, Westminster and Victoria with great transport links nearby; Vauxhall tube/train/bus stations, Nine Elms tube station and Westminster tube station.

### Features

- Three Double Bedrooms
- Two Bathrooms
- Newly Refurbished
- Direct River Views
- Porter On Site
- Heating & Hot Water Included

Nine Elms Lane,  
London, SW8



Total area (approx.): 110.1 sq. m (1185.1 sq. ft)