

## Lawrence Close, W12

### £360,000

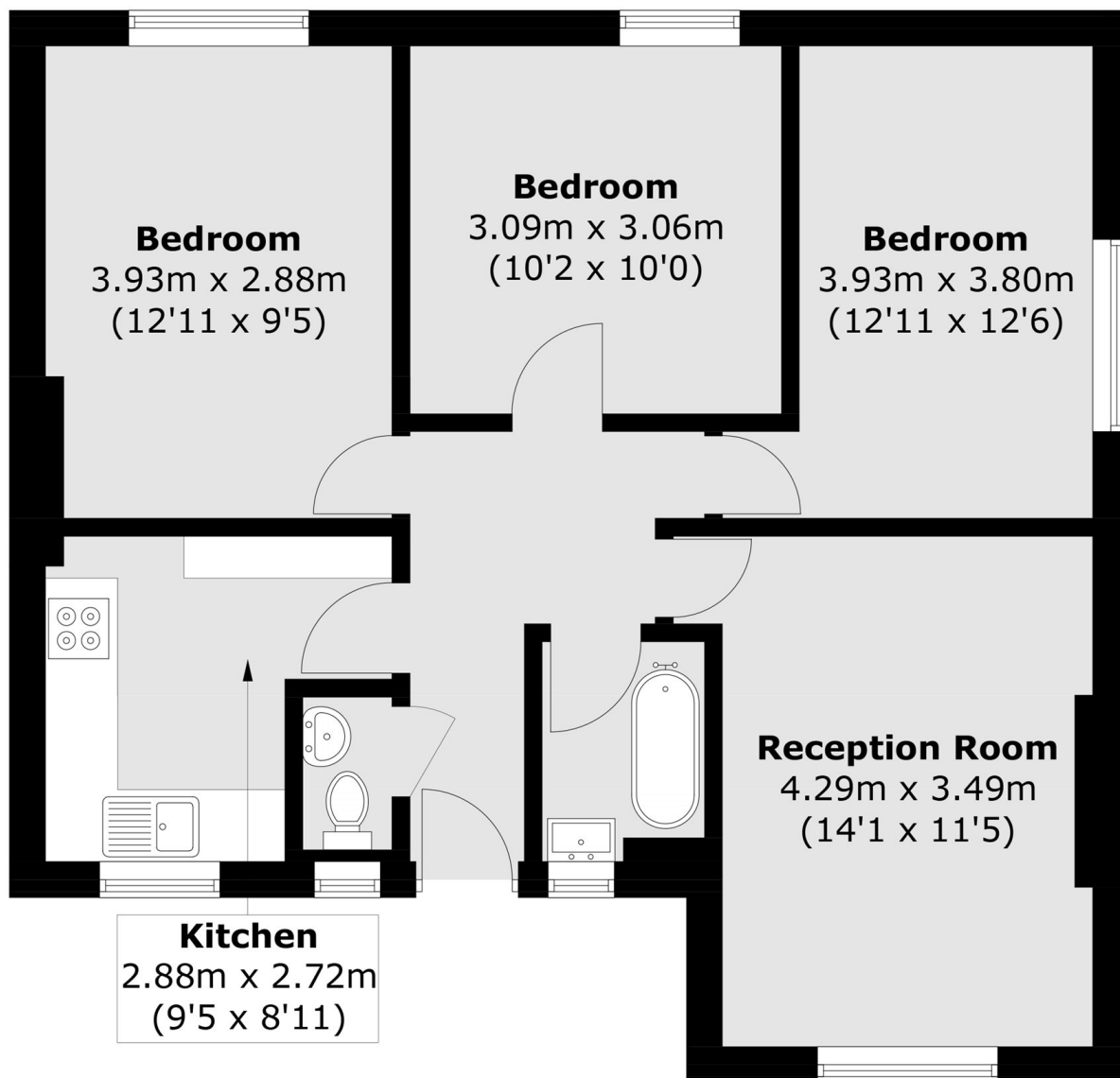
A spacious, three double bedroom apartment right in the heart of Shepherd's Bush. A perfect opportunity for both first time buyers looking for a spacious home or investors looking to add a high yield property to their portfolio. The property is also offered to the market chain free.

Lawrence Close is located close to Westfield White City, BBC Centre, numerous shops, restaurants and bars. Sainsbury's and Wormholt Park less than a mile away. It is ideally located, providing easy access to the A40 and transport into Central London. Transport links are excellent. Central and Hammersmith & City Line tubes.

### Features

- Three Double Bedrooms
- Close to Transport Links
- Westfield Shopping Centre
- Wormholt Park
- Residents Parking
- No Onward Chain

# Lawrence Close, London, W12



## First Floor

Total area (approx.): 64.0 sq. m (688.9 sq. ft)