



Price
£450,000

Freehold

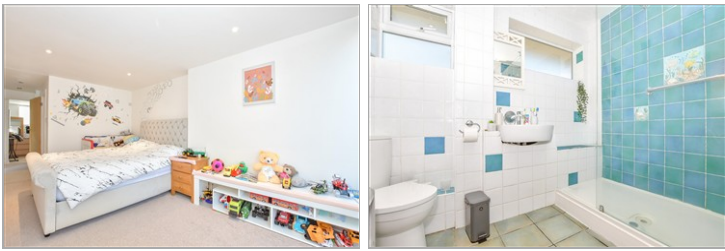
4x  2x  2x 

**Keymer Avenue,
Peacehaven, East
Sussex, BN10**

OVER 60?

Secure this property
for up to **59% less!**

cubitt & west
Helping you move forwards



Main features

- Driveway for multiple cars
- Benefits from two family bathrooms
- Office which can double up as guest room or bedroom four
- Close to shops, schools, and transport links
- Chain Free

Accommodation

SPLIT LEVEL GROUND FLOOR

Entrance hallway

Kitchen: 12'0 x 7'3 (3.66m x 2.21m)

Family Bathroom: 7'11 x 6'2 (2.41m x 1.88m)

Bedroom 2: 10'1 x 9'7 (3.08m x 2.92m)

Bedroom 3: 15'7 x 9'3 (4.75m x 2.82m)

Dining Room: 13'5 x 10'0 (4.09m x 3.05m)

Lounge : 21'0 x 11'10 (6.41m x 3.61m)

Bedroom 1: 11'9 x 11'1 (3.58m x 3.38m)

Family Bathroom : 5'7 x 5'1 (1.70m x 1.55m)

Office/Bedroom 4: 8'9 x 7'10 (2.67m x 2.39m)

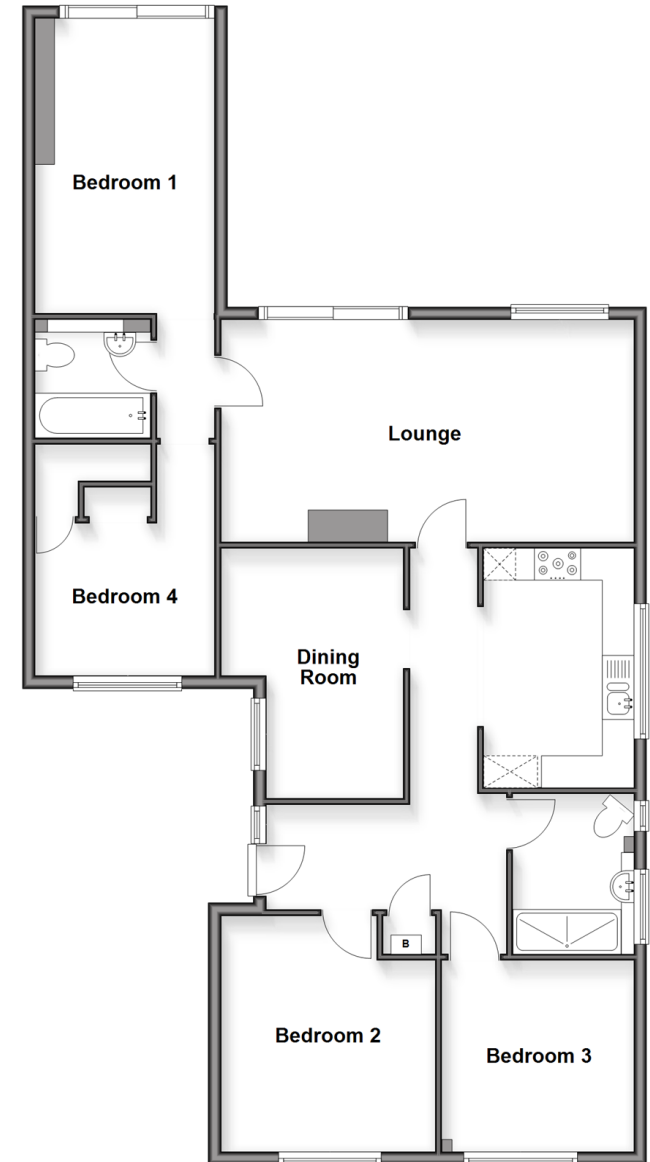
OUTSIDE

Driveway

Rear Garden

Split Level Ground Floor

Approx. 111.7 sq. metres (1202.1 sq. feet)



Call Peacehaven - 01273 584511 ■ cubittandwest.co.uk

- A private rental licensing scheme applies to some properties in this area, please check with the Local Authority before proceeding
- Through a Homewise Home For Life Plan people aged 60+ can secure this property for up to 59% less, by purchasing a Lifetime Lease



31811299/20260410/BG/BG