



OVER 60?

Secure this property
for up to **59% less!**

Price

£310,000

Freehold

3x  1x  2x 

**High Street, Freshwater,
Isle of Wight, PO40**

Pittis 
Helping you move forwards



Main features

- Charming period cottage with gas burner fireplace & period features
- Off road parking for multiple cars at the rear of the garden
- A larger garden ideal for veg plots
- Upgraded shower room with plenty of light
- Within walking distance to Freshwater village & amenities

Accommodation

GROUND FLOOR

Entrance Porch
 Lounge: 11'1 x 11'1 (3.38m x 3.38m)
 Kitchen: 10'7 x 9'0 (3.23m x 2.75m)
 Dining Room: 11'9 x 9'0 (3.58m x 2.75m)
 Cloakroom
 Utility Area

FIRST FLOOR

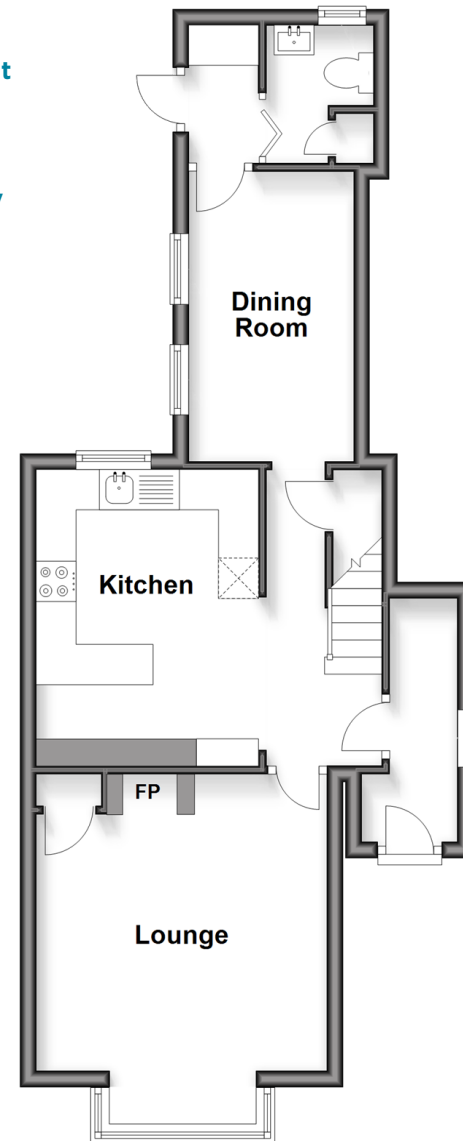
Landing
 Bedroom 1: 11'11 x 11'11 (3.63m x 3.63m)
 Bedroom 2: 11'9 x 7'10 (3.58m x 2.39m)
 Bedroom 3: 10'9 x 9'1 (3.28m x 2.77m)
 Bathroom
 Separate Toilet

OUTSIDE

Off Road Parking
 Front Garden
 Rear Garden

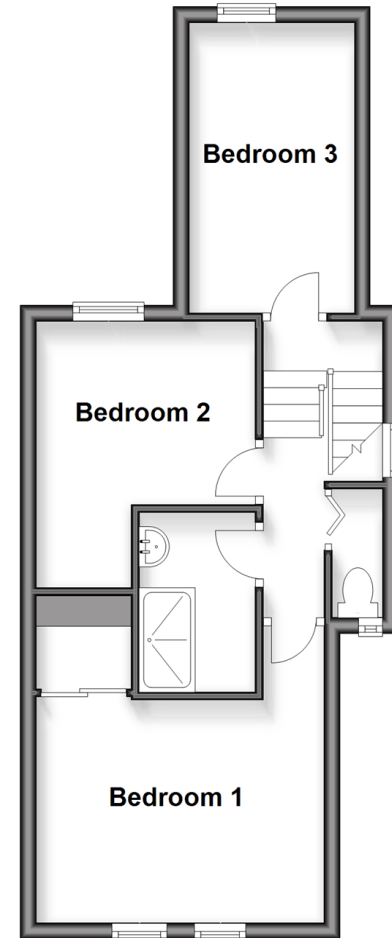
Ground Floor

Approx. 45.2 sq. metres (486.9 sq. feet)



First Floor

Approx. 37.2 sq. metres (400.4 sq. feet)



Call Freshwater - 01983 756222 ■ pittis.co.uk

- Legal advice should be taken to verify fixtures/fittings, planning, alterations and/or lease details
- Appliances & services are untested, dimensions are approximate and floor plans are not to scale
- Through a Homewise Home For Life Plan people aged 60+ can secure this property for up to 50% less, by purchasing a Lifetime Lease



60218702/20251229/CG/CG