

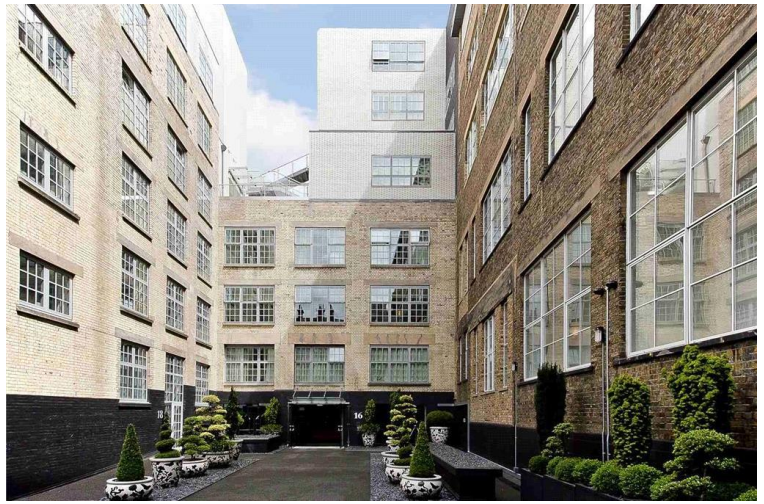


## Marshall Street, London W1F

Price £1,300 per week - Furnished







## Description

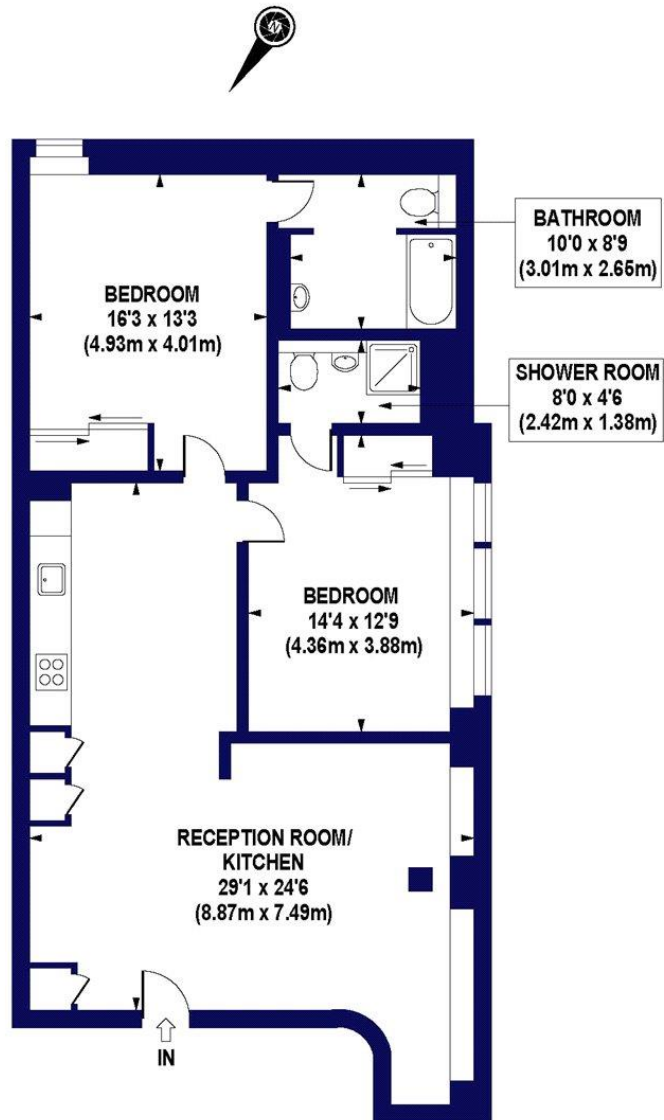
A wonderful third floor flat (with lift) in this quiet and sought after courtyard development with 24 hour concierge. The property consists of master bedroom with en suite bathroom, second double bedroom with en suite shower room, reception room and a fully fitted, open plan kitchen. The flat is presented in excellent order and further benefits from wooden flooring throughout and elegant furnishings. The building is conveniently located moment from the transport and shopping amenities of Oxford Circus and Piccadilly Circus.

Council tax band: G. Rent is payable on a monthly basis, and you may be required to pay more than a month's rent in advance for tenancies with annual rents exceeding £100,000. You will be required to pay a 1 week holding deposit following a successful offer. Tenancies with annual rents up to £50,000 will require a 5 weeks' security deposit, while those exceeding this threshold will require a 6 weeks' deposit. Utility bills, council tax, telephone line and broadband are not included in the rent. As well as paying the rent, you may also be required to make some additional permitted payments. If your tenancy does not qualify as an APT, additional fees may apply. Please visit [jll.co.uk/fees](http://jll.co.uk/fees) for details of fees that may be payable when renting a property. To check broadband and mobile phone coverage please visit Ofcom here [ofcom.org.uk/phones-telecoms-and-internet/advice-for-consumers/advice/ofcom-checker](http://ofcom.org.uk/phones-telecoms-and-internet/advice-for-consumers/advice/ofcom-checker)

- 2 Double bedrooms
- 1 Bathroom (en suite)
- 1 Shower room (en suite)
- Reception room
- Open plan kitchen
- Third floor
- Lift
- 24 Hour concierge
- Approx. 1,091 sq ft (101 sq m)
- Furnished

# Floorplan

1,091 sq ft | 101 sq m



THIRD FLOOR

APPROX. GROSS INTERNAL AREA 1091 sq.ft / 101.40 sq.m

COMPLIANT WITH RICS CODE OF MEASURING PRACTICE Floorplan is for illustrative purposes only and is not to scale. Every attempt has been made to ensure the accuracy of the floorplan shown, however all measurements, fixtures, fittings and data shown are an approximate interpretation for illustrative purposes only. Liability for errors, omissions or mis-statement through negligence or otherwise is hereby excluded.

  
CP | CREATIVE  
Property Marketing

Mayfair and Marylebone  
St George Street,  
London W1S 2FQ  
+44 207 399 5550  
mayfair@jll.com

*Urban living, your way.*

[jll.co.uk/residential](http://jll.co.uk/residential)

© 2019 Jones Lang LaSalle IP, Inc. All rights reserved. All information contained herein is from sources deemed reliable; however, no representation or warranty is made to the accuracy thereof.

