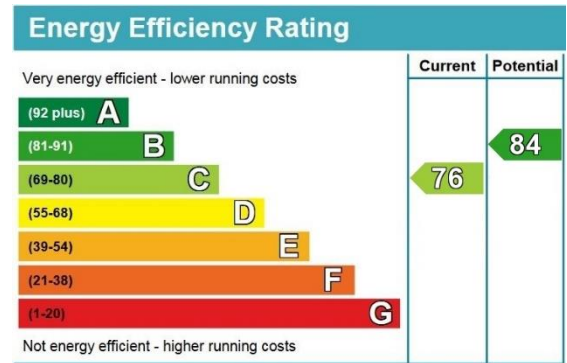
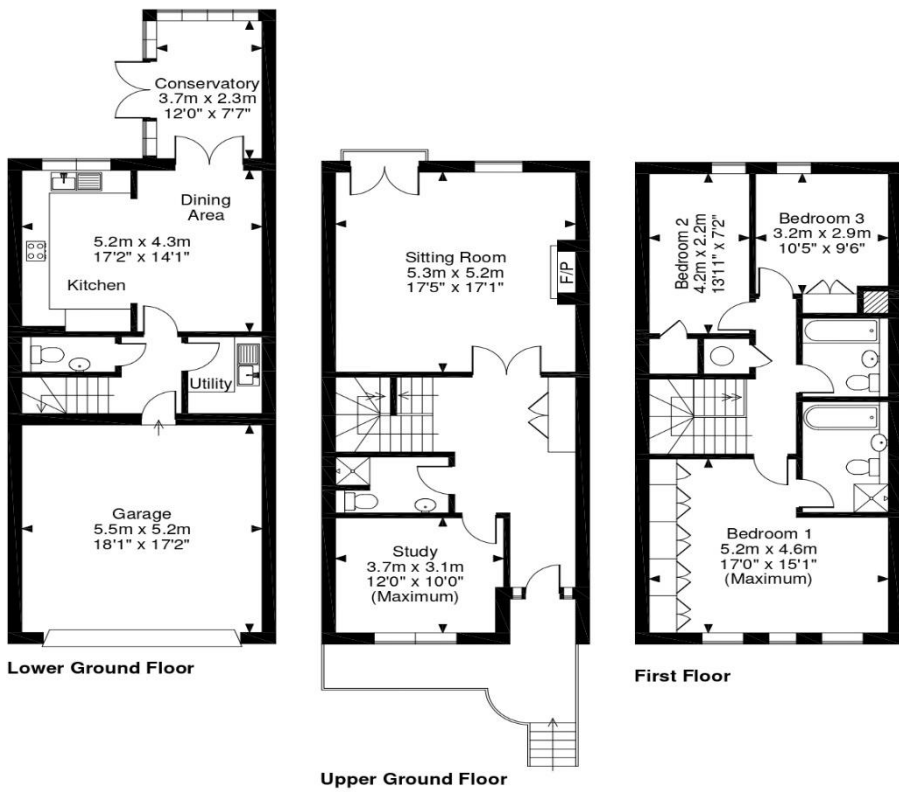
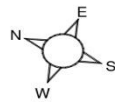




24 Chapel Square,
Virginia Park, Virginia Water, Surrey. GU25 4SZ.



Chapel Square, Virginia Water
Approximate Gross Internal Area
Main House = 1812 Sq Ft/169 Sq M
Garage = 310 Sq Ft/29 Sq M
Total = 2122 Sq Ft/198 Sq M



FOR ILLUSTRATIVE PURPOSES ONLY - NOT TO SCALE
The position & size of doors, windows, appliances and other features are approximate only.
© ehouse. Unauthorised reproduction prohibited. Drawing ref. dig/8184623/NJD



The Estate Office, 2 Station Approach,
Virginia Water, Surrey, GU25 4DL
Tel: 01344 843000
Email: homes@bartonwyatt.co.uk
www.bartonwyatt.co.uk

24 Chapel Square,

Virginia Park, Virginia Water, Surrey. GU25 4SZ.

A beautifully presented townhouse on the prestigious Virginia Park Private estate in Virginia Water. Located in the much sought-after chapel square.

- ◇ Communal indoor swimming pool and gymnasium
- ◇ Two tennis courts and children's playground
- ◇ 24-hour manned security
- ◇ Listed grand entertaining Hall and Chapel available for resident's use
- ◇ 3/4 bedrooms
- ◇ Beautifully proportioned drawing room
- ◇ Open plan kitchen/breakfast room/conservatory
- ◇ Separate utility room
- ◇ Double garage
- ◇ Private patio garden

Situation

Virginia Park is situated in an ultra-convenient position only a short level walk from the picturesque shopping parades of Virginia Water with its excellent shops for day to day needs, restaurants and mainline railway station with a fast service of trains to Waterloo in approximately 42 minutes. There is an excellent Waitrose in Sunningdale and for more extensive shopping facilities, the towns of Windsor, Staines, Guildford and Kingston are all close at hand. Junction 13 of the M25 is just 3.5 miles away giving access to London, Heathrow and the motorway network.

Other than the world-renowned Wentworth Club, country clubs are abound in the area such as Foxhills, Queenwood, Sunningdale and the Royal Berkshire. Delightful walks can be enjoyed around Virginia Water Lake which leads up to the Polo fields at Smiths Lawn and is adjacent to Savill Gardens and Windsor Great Park beyond for riding. The area is also very well catered for by a huge choice of private prep schools, as well as two international schools, ACS in Egham and TASIS in Thorpe.

Fixtures and Fittings

Carpets, and fitted kitchen appliances included. Curtains, blinds and light fittings are by separate negotiation

Services

The property has mains gas, electricity, water and mains drainage.

Local Authority

Runnymede Borough Council 01932 838383

Energy Rating

E49

Tenure

Freehold

Service Charge

TBC

Council Tax Band

Band G

