



**Plot 1 The Hawthorns, Scropton Derby DE65 5PP**

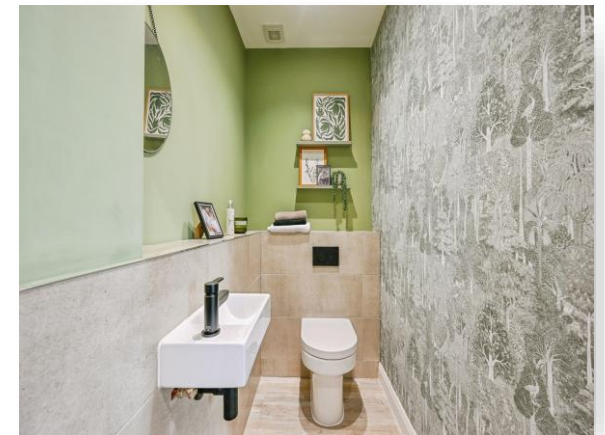
welcome to

## Plot 1 The Hawthorns, Scropton Derby

FLOORING INCLUDED WORTH OVER £9000

£1500 LEGAL FEES CONTRIBUTION

This beautifully crafted four-bedroom detached family home with a double garage set within the peaceful village of Scropton, surrounded by open countryside demands internal viewing to fully appreciate.



### Entrance Hall

A bright and welcoming entrance space with modern flooring, feature lighting and access to all principal ground-floor rooms. The staircase rises gracefully to the first floor.

### Sitting Room

16' 5" x 10' 2" ( 5.00m x 3.10m )

A beautifully presented dual-aspect room featuring a charming bay window, providing a cosy yet sophisticated space ideal for relaxing or entertaining.

### Study

6' 3" x 6' 2" ( 1.91m x 1.88m )

A perfectly placed home office with natural light—ideal for remote working, reading or private study.

### Kitchen/Living/Dining Room

33' 1" x 12' 8" ( 10.08m x 3.86m )

The showpiece of the home.

This superb open-plan space features a contemporary kitchen with central island and integrated appliances, defined living and dining areas, two sets of French doors leading to the rear garden, abundant natural light and views over the countryside.

A sociable, versatile and luxurious environment for family life.

### Utility

9' 9" x 5' 9" ( 2.97m x 1.75m )

A practical and well-designed utility room with exterior access—ideal for muddy boots, laundry and household storage.

### Ground Floor W/C

A stylish and convenient cloakroom with a W/C and wash hand basin

### Landing

Double height ceilings as you ascend the stairs to the first floor open to the spacious landing, which allows access to all four bedrooms, the family bathroom, and the airing cupboard.

### Main Bedroom

12' 8" x 10' 9" ( 3.86m x 3.28m )

A generous, beautifully decorated principal suite with countryside views and direct access to the spacious separate dressing room, and further, the en-suite shower room

### En-Suite

9' 9" x 3' 11" ( 2.97m x 1.19m )

A modern, high-quality en-suite with walk-in shower, vanity wash basin and premium tiling.

### Bedroom Two

10' 10" x 8' 8" ( 3.30m x 2.64m )

A bright double room with space for freestanding furniture and relaxing views.

### Bedroom Three

10' 10" x 8' 8" ( 3.30m x 2.64m )

Another well-proportioned double bedroom, ideal as a child's bedroom or secondary workspace.

### Bedroom Four

10' 2" x 9' 9" ( 3.10m x 2.97m )

A versatile bedroom suitable for a nursery, study, guest bedroom or dressing room.

### Family Bathroom

9' 9" x 5' 7" ( 2.97m x 1.70m )

A contemporary and stylish suite featuring modern tiling, vanity sink unit, heated towel rail and shower-over-bath with glass screen.

### Outside

The exterior of The Hawthorns presents an immaculate and attractive façade, combining contemporary design with traditional charm. Set behind a landscaped frontage, the home features a generous driveway offering ample parking and a spacious garage.

The rear garden is private and neatly enclosed, enjoying open views across the adjoining countryside. With its clean architectural lines, quality brickwork and well-planned outdoor space, the property makes an impressive first impression and offers a peaceful, rural setting to complement its modern interior.

### Local Area

Scropton is a charming and peaceful Derbyshire village surrounded by rolling fields and farmland, offering the perfect balance of rural living and excellent connectivity.

Close to Hilton, Tutbury and Hatton, providing local shops, cafés, pubs and daily amenities, and great transport links via the A50, A38 and nearby rail connections at Tutbury & Hatton. There are highly regarded schools in the surrounding villages, with good primary and secondary options, beautiful countryside walks directly from the doorstep, ideal for families, dog walkers and outdoor enthusiasts and the village is within easy reach of Derby, Burton-upon-Trent and Uttoxeter, providing wider shopping, dining and leisure opportunities.

Scropton delivers a relaxed village lifestyle while remaining practical for commuters and families alike.



**view this property online** [bagshawsresidential.co.uk/Property/MVR109526](https://www.bagshawsresidential.co.uk/Property/MVR109526)



welcome to

## Plot 1 The Hawthorns, Scropton Derby

- SET WITHIN AN EXCLUSIVE, HIGH QUALITY VILLAGE DEVELOPMENT \*\*ONLY 7 PLOTS REMAINING\*\*
- FLOORING INCLUDED WORTH OVER £9000 AND £1500 LEGAL FEES CONTRIBUTION
- IMPRESSIVE FOUR-BEDROOM DETACHED NEW BUILD HOME
- EXPANSIVE OPEN PLAN LIVING/KITCHEN/DINER WITH UTILITY
- SEPARATE SITTING ROOM AND STUDY

Tenure: Freehold EPC Rating: Exempt  
Council Tax Band: Deleted

**£525,000**



Please note the marker reflects the  
postcode not the actual property

**view this property online** [bagshawsresidential.co.uk/Property/MVR109526](https://bagshawsresidential.co.uk/Property/MVR109526)



Property Ref:  
MVR109526 - 0006

1. MONEY LAUNDERING REGULATIONS Intending purchasers will be asked to produce identification documentation at a later stage and we would ask for your co-operation in order that there is no delay in agreeing the sale. 2. These particulars do not constitute part or all of an offer or contract. 3. The measurements indicated are supplied for guidance only and as such must be considered incorrect. Potential buyers are advised to recheck measurements before committing to any expense. 4. We have not tested any apparatus, equipment, fixtures or services and it is in the buyers interest to check the working condition of any appliances. 5. Where an EPC, or a Home Report (Scotland only) is held for this property, it is available for inspection at the branch by appointment. If you require a printed version of a Home Report, you will need to pay a reasonable production charge reflecting printing and other costs. 6. We are not able to offer an opinion either written or verbal on the content of these reports and this must be obtained from your legal representative. 7. Whilst we take care in preparing these reports, a buyer should ensure that his/her legal representative confirms as soon as possible all matters relating to title including the extent and boundaries of the property and other important matters before exchange of contracts.

Bagshaws Residential is a trading name of Sequence (UK) Limited which is registered in England and Wales under company number 4268443, Registered Office is Cumbria House, 16-20 Hockliffe Street, Leighton Buzzard, Bedfordshire, LU7 1GN. VAT Registration Number is 500 2481 05.



bagshaws residential



**01332 518844**



Mickleover@bagshawsresidential.co.uk



14 The Square, Mickleover, DERBY, Derbyshire,  
DE3 0DD



**bagshawsresidential.co.uk**