



SARAH FUDGE

POWERED BY  
**exp**™ UK

@ sarah.fudge@exp.uk.com

🌐 sarahfudge.exp.uk.com

☎ 01202 985301

# Hamworthy, Poole, Dorset.

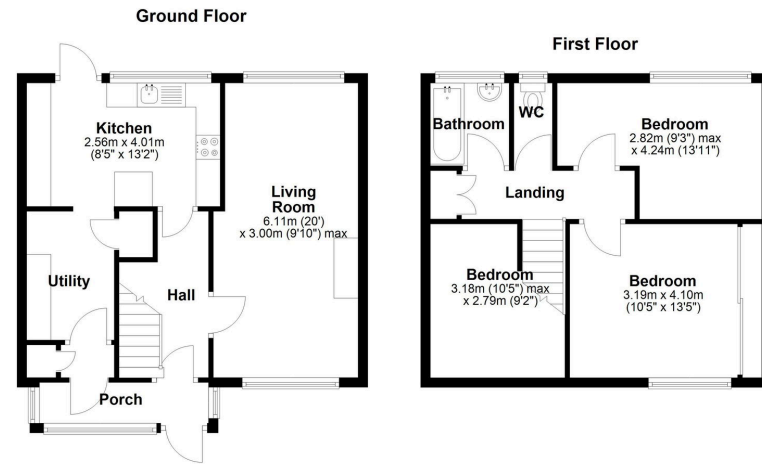
Offers In Region Of £286,000

3 1 1



- Three Bedroom End Terrace House
- Kitchen / Breakfast Room
- Lounge / Diner
- Utility Room
- Off Road Parking for multiple cars / boat / caravan
- No Chain
- Enclosed Rear Garden
- Have you watched the internal video yet?
- Property Ref: 1114529





Bournemouth Energy Floor Plans are provided for illustration/identification purposes only. Not drawn to scale, unless stated and accept no responsibility for any error, omission or mis-statement. Dimensions shown are to the nearest 7.5 cm/3 inches. Total approx area shown on the plan may include any external terraces, balconies and other external areas. To find out more about Bournemouth Energy please visit [www.bournemouthenergy.co.uk](http://www.bournemouthenergy.co.uk) (Tel: 01202 556006) Plan produced using PlanUp.

If you're looking for a home with space, potential, in a fantastic location – this could be the one.

This three-bedroom house in Poole backs directly onto the beautiful Lytchett Bay SSSI site and sports fields/recreation ground, giving you nature-filled views right from your back garden.

Inside, you'll find a good-sized lounge / diner, a kitchen / breakfast room, and a handy utility room. Upstairs are two double bedrooms and a great sized third bedroom ready to be styled to your taste.

Outside, there's plenty of off-road parking – enough for multiple cars, or even a caravan or boat if that's more your thing. The rear garden is a real highlight: enclosed, generous, and backing

