



Walgrave, Orton Malborne, Peterborough, PE2 5NS

Mid Terraced House - 2 Bedrooms - Kitchen - Lounge/Diner - Bathroom - Front & Rear Garden – Allocated Parking -
Call To View (01354) 696700

£160,000



Ground Floor

Enclosed Porch
Double glazed entrance door, double glazed windows to front and side, tiled flooring and open plan to:

Kitchen
4.28m (14') x 2.46m (8'1")
Fitted with a matching range of base and eye level units with worktop space over, stainless steel sink with tiled splashbacks, integrated fridge and freezer, plumbing for washing machine and dishwasher, built-in oven, built-in four ring gas hob with pull out extractor hood over, double glazed window to front, storage cupboard, radiator, tiled flooring and door to:

Lounge/Diner
4.40m (14'5") x 4.28m (14')
Single radiator, stairs to first floor and double glazed sliding doors to garden.

First Floor

Landing
Stairs from first floor, boiler cupboard and doors to:

Bedroom 1
4.30m (14'1") x 3.37m (11'1") max
Double glazed window to rear, built-in wardrobe and single radiator.

Bedroom 2
3.49m (11'5") max x 2.30m (7'6")
Double glazed window to front and radiator.

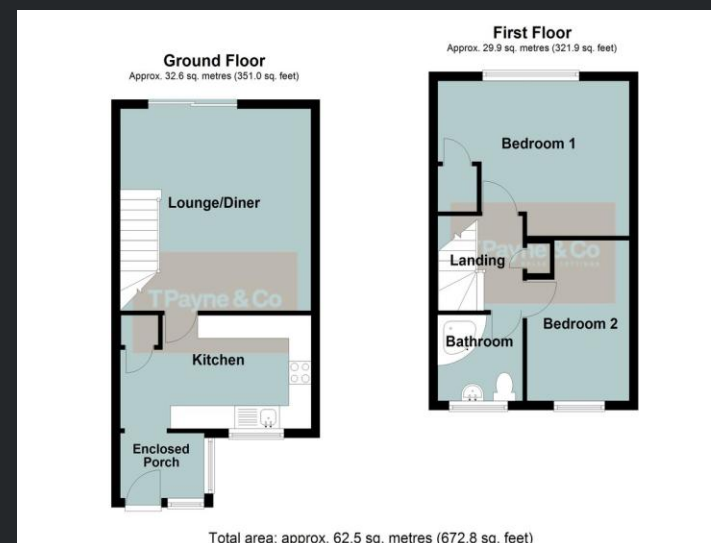
Bathroom
Fitted with three piece suite with comprising, corner bath, pedestal wash hand basin and low-level WC, part tiled walls, double glazed window to front, single radiator and vinyl flooring.

Outside

A front lawn with pathway leads to the front entrance door and a rear gate gives access to the enclosed rear garden which is mainly laid to lawn with patio area and timber shed.

There are two allocated parking space with the property.

EPC Rating: D



Call to arrange a viewing **01354 696700** **T Payne & Co**
SALES & LETTINGS

Agents Notes: Whilst every care has been taken to prepare these sales particulars, they are for guidance purposes only. All measurements are approximate and for general guidance purposes only and whilst every care has been taken to ensure their accuracy, they should not be relied upon and potential buyers are advised to recheck the measurements.