

Ashmere Grove,, Brixton, SW2

2 bedroom flat to let

£558 Per Week

Furnished

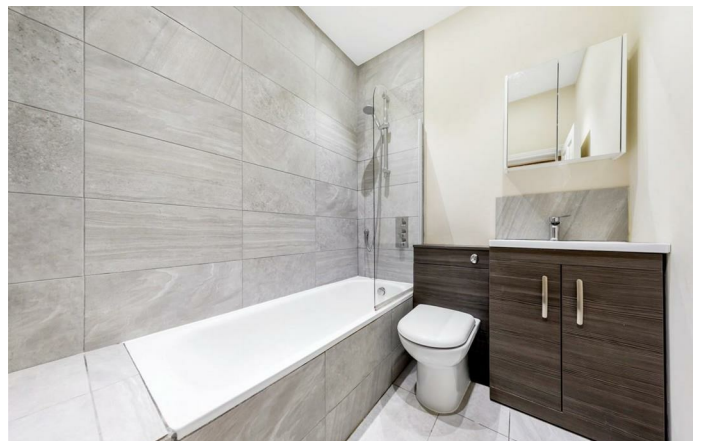
Property Details

A stunningly presented , spacious two double bed Victorian conversation flat- situated in a beautiful pocket of Clapham North. The flat comprises of a wonderful, large open plan kitchen and living area. The kitchen is fitted with all integrated appliances and topped off with a rounded sleek breakfast island. The reception area is flooded by natural light through skylights and bi-folding doors which open up onto your very own private patio garden. There are also two spacious double bedrooms and a modern family size bathroom. Ashmere Road is located within walking distance of both the Victoria line and Northern line.

Features

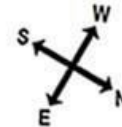
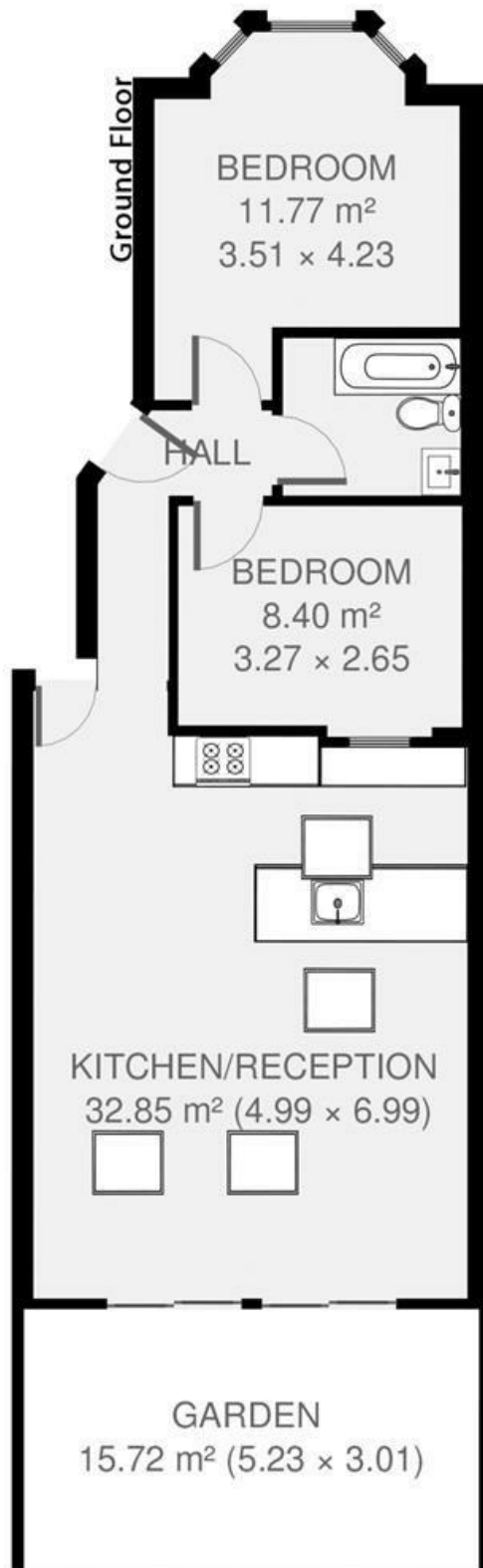
- Private garden
- Hardwood floors and doors
- Central location
- Victorian conversion
- Close to clapham common
- Walking distance to the northern and victoria tube lines

Council tax band D EPC rating C (79)



Ashmere Grove,, Brixton, SW2

Ashmere Grove



2 bed Flat.

Approx internal area:

754 sqft 70 sqm

While we do try our very best, floor plans are produced as a guide only and we take no responsibility for the precise accuracy with which any property is represented

Ashmere Grove,, Brixton, SW2

