



St. Helens Gardens, W10

£820,000



- Private Garden
- Garden Room

- High Ceilings
- Underfloor Heating

- Two Bedrooms
- Long Lease





ABOUT THE PROPERTY

A two bedroom ground floor apartment with high ceilings, a private garden and separate garden room, offering bright and well-proportioned living space within a period building.

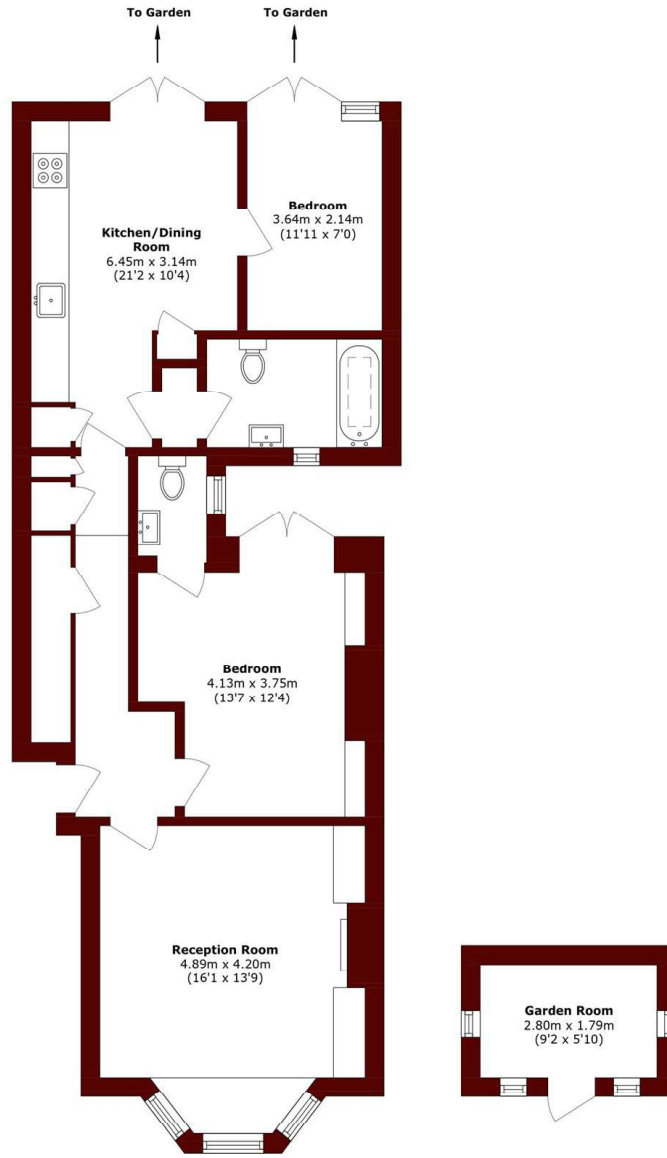
This ground floor apartment offers a well-balanced layout with high ceilings and a strong sense of natural light throughout. A bay-fronted reception room sits at the front, while the kitchen and dining room are positioned to the rear with direct access to the garden.

Both bedrooms are well-proportioned doubles, with the rear bedroom opening onto the outside space. The property also benefits from a bathroom and an additional WC, with underfloor heating adding comfort across the home.

The private garden extends from the kitchen and provides a useful outdoor space, complete with a separate garden room that works well as a studio or workspace. The property is well located for Portobello Road and Ladbroke Grove underground station.

St. Helens Gardens is a residential street close to Portobello Road and Golborne Road, less than half a mile from Ladbroke Grove underground station and well connected into central London.





Ground Floor

Ground Floor

Total area (approx.): 73.6 sq. m (792.2 sq. ft)
Outbuilding area (approx.): 5.0 sq. m (53.8 sq. ft)

Marsh & Parsons North Kensington
110 Ladbrooke Grove,
London, W10 5NE
020 7313 8350

We aim to make our particulars both accurate and reliable. However, they are not guaranteed; nor do they form part of an offer or contract. If you require clarification on any points then please contact us, especially if you're traveling some distance to view. Please note that appliances and heating systems have not been tested and therefore no warranties can be given as to their good working order.