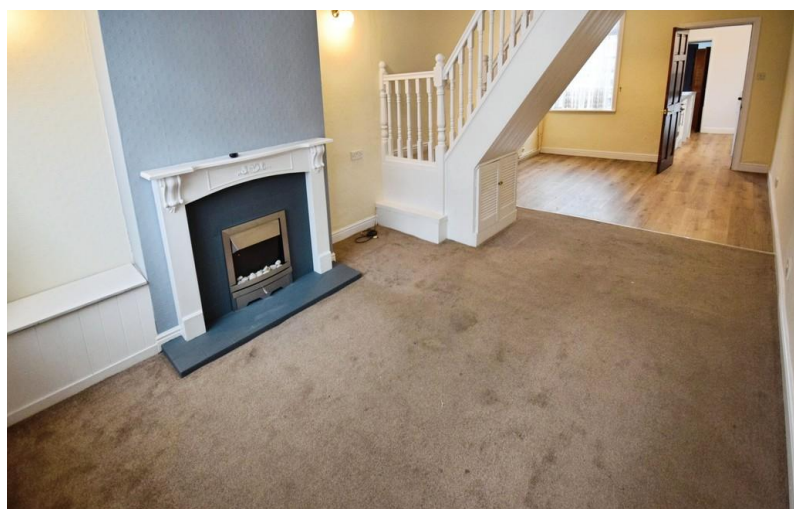


TO LET



Wade Street Burslem

2 Bedrooms, 1 Bathroom, Mid Terreced House

£725 pcm



Wade Street Burslem

2 Bedrooms, 1 Bathroom

£725 pcm

Date available: Available Now

Deposit: £836

Unfurnished

Council Tax band: A

- Terraced house
- Open plan lounge dining room
- Downstairs bathroom
- Two Double bedrooms
- Rear yard
- Popular area
- Kitchen

PROPERTY DETAILS SUPERB ORDER

THROUGHOUT. Martin and co are delighted to offer this two bedroom terraced house located on the popular Park estate within a short distance of Burslem town centre and regular bus services to Hanley town centre. The property comprises open plan lounge dining room, kitchen and bathroom to the ground floor and two double bedrooms to the first floor. Outside there is a rear yard area.

OPEN PLAN LOUNGE DINER In the lounge area the flooring is carpeted. In addition the room has a window to the front elevation and a feature fireplace. In the dining room area the flooring is laminated, there is a wall mounted radiator and a window to the rear elevation.

KITCHEN Fitted kitchen comprising of a range of base and wall units with work tops over, stainless steel sink and drainer with mixer tap over, gas hob with extractor over, electric oven, tiled splash backs, window to side elevation, wall mounted radiator and wall mounted boiler.





BATHROOM Three piece suite comprising of WC, wash hand basin and bath with shower head off taps, part tiled walls and window to side elevation.

STAIRS Carpeted.

BEDROOM ONE Double bedroom with carpeted flooring, wall mounted radiator and window to front elevation.

BEDROOM TWO Double bedroom with carpeted flooring, wall mounted radiator and window to rear elevation.





Energy Efficiency Rating

	Current	Potential
Very energy efficient - lower running costs		
(92-100) A		
(81-91) B		85
(69-80) C		
(55-68) D	67	

Martin & Co Stoke on Trent

12 Albion Street • Stoke-On-Trent • ST1 1QH

T: 01782 262880 • E: stokeontrent@martinco.com <http://www.martinco.com>

01782 262880



Accuracy: References to the Tenure of a Property are based on information supplied by the Seller. The Agent has not had sight of the title documents. A Buyer is advised to obtain verification from their Solicitor. Items shown in photographs including but not limited to carpets, fixtures and fittings are not included unless specifically mentioned within the sales particulars. They may however be available by separate negotiation. Buyers must check the availability of any property and make an appointment to view before embarking on any journey to see a property. No person in the employment of the agent has any authority to make any representation about the property, and accordingly any information given is entirely without responsibility on the part of the agents, sellers(s) or lessors(s). Any property particulars are not an offer or contract, nor for part of one. **Sonic / laser Tape:** Measurements taken using a sonic / laser tape measure may be subject to a small margin of error. **All Measurements:** All Measurements are Approximate. **Services Not tested:** The Agent has not tested any apparatus, equipment, fixtures and fittings or services and so cannot verify that they are in working order or fit for the purpose. A Buyer is advised to obtain verification from their Solicitor or Surveyor.