



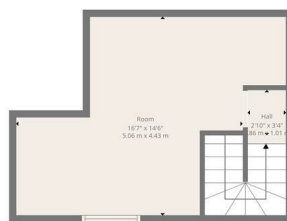
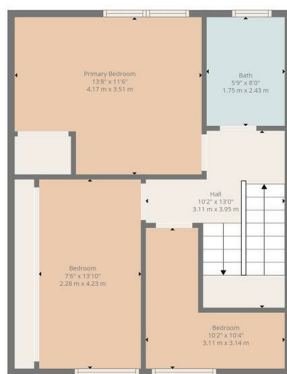
HEMMINGS HOMES

FIXED ASKING PRICE

£140,000

Dryburgh Place

Coatbridge, ML5 1QP



Ground Floor

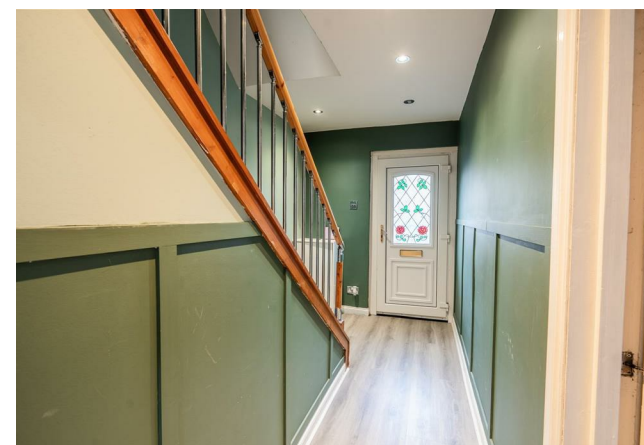
1st Floor

2nd Floor



TOTAL: 1102 sq. ft, 102 m²
 Ground floor: 422 sq. ft, 39 m², 1st floor: 510 sq. ft, 47 m², 2nd floor: 170 sq. ft, 16 m²
 EXCLUDED AREAS: LOW CEILING: 78 sq. ft, 8 m², WALLS: 130 sq. ft, 12 m²

Floor Plan Created By Cubic8 App. Measurements Deemed Highly Reliable But Not Guaranteed.



Energy Efficiency Rating		
	Current	Potential
Very energy efficient - lower running costs		
(92 plus) A		
(81-91) B		
(69-80) C		
(55-68) D		
(39-54) E		
(21-38) F		
(1-20) G		
Not energy efficient - higher running costs		
Scotland	67	73
	EU Directive 2002/91/EC	

Agents Note: Whilst every care has been taken to prepare these particulars, they are for guidance purposes only. All measurements are approximate and are for general guidance purposes only and whilst every care has been taken to ensure their accuracy, they should not be relied upon and potential buyers/tenants are advised to recheck the measurements



OFFICE ADDRESS
 376 Brandon Street
 Motherwell
 North Lanarkshire
 ML1 1XA

OFFICE DETAILS
 01698 263413
enquiries@hemmingshomes.co.uk
hemmingshomes.co.uk