



Matthew Parker Street, SW1H

£1,096 Per week

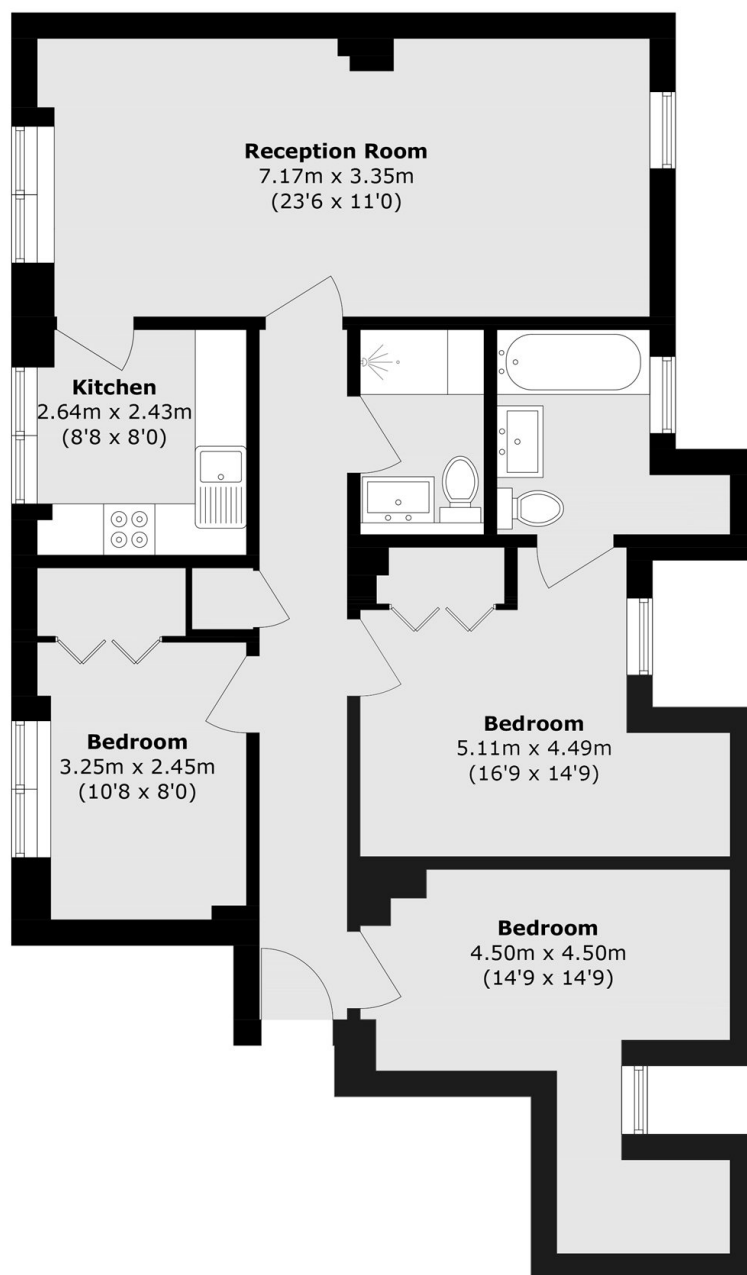
This recently refurbished top-floor apartment offers well-balanced accommodation, including three bedrooms, two bathrooms (one en-suite), a generous reception and dining room, and a separate kitchen.

The property benefits from both north and south-facing aspects, allowing for excellent natural light throughout. The building features a concierge service, secure entry system, and lift access.

Features

- Three Double Bedrooms
- Share Of Freehold
- No Onward Chain
- Two Bathrooms
- Lift Access
- Concierge

Matthew Parker Street,
London, SW1H



Total area (approx.): 87.6 sq. m (942.9 sq. ft)