



Webbs
Helping people move since 1994

Wychbold Close | Willenhall | WV12 5XL

Offers Over £180,000



Summary

****THREE BEDROOMS**KITCHEN DINER**DECEPTIVELY SPACIOUS**GUEST WC**FITTED BATHROOM**POPULAR LOCATION**CLOSE TO ALL LOCAL AMENITIES**POPULAR LOCATION**VIEWING ESSENTIAL****

Nestled in the sought-after area of Wychbold Close, Willenhall, this charming end-terrace house presents an excellent opportunity for first-time buyers or savvy investors. The property boasts three well-proportioned bedrooms, providing ample space for families or those looking to create a comfortable home.

Upon entering, you will find a welcoming hallway that leads seamlessly into a spacious kitchen-diner, perfect for both entertaining guests and enjoying family meals, and a living room. The fitted bathroom is designed for convenience, and an additional guest WC adds to the practicality of the home.

One of the standout features of this property is its deceptively spacious layout, which maximises the available space, making it feel larger than it appears. The location is particularly appealing, as it is close to a variety of local amenities, ensuring that everything you need is just a stone's throw away.

Key Features

- THREE BEDROOMS
- KITCHEN DINER
- DECEPTIVELY SPACIOUS
- GUEST WC
- VIEWING ESSENTIAL
- POPULAR LOCATION
- FITTED BATHROOM
- PERFECT FIRST TIME BUY OR INVESTMENT
- CLOSE TO ALL LOCAL AMENITIES
- CALL WEBBS TO SECURE YOUR VIEWING ON 01922 663399!!

Rooms and Dimensions

Entrance Hall

18'2" x 3'1" (5.54m x 0.95m)

Guest WC

3'10" x 2'9" (1.18m x 0.85m)

Kitchen Diner

18'1" x 9'3" (5.52m x 2.84m)

Lounge

15'7" x 10'8" (4.77m x 3.27m)

First Floor Landing

Bedroom One

11'9" x 8'7" (3.59m x 2.64m)

Bedroom Two

12'7" x 9'9" (3.85m x 2.98m)

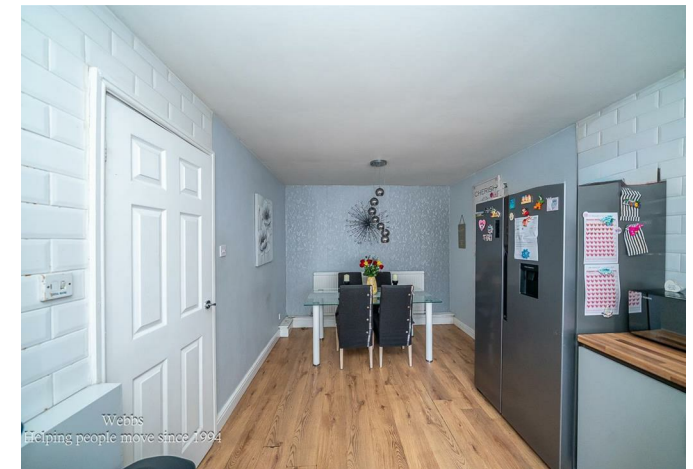
Bedroom Three

9'10" x 5'9" (3.00m x 1.76m)

Family Bathroom

10'0" x 6'0" (3.05m x 1.83m)

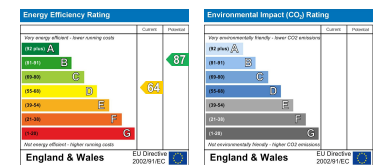
Identification Checks B







Webbs Estate Agents - endeavour to maintain accurate depictions of properties in Virtual Tours, Floor Plans and descriptions, however, these are intended only as a guide and purchasers must satisfy themselves by personal inspection.



212 High Street, Bloxwich, Walsall, WS3 3LA

Tel: 01922 663399 | Email: bloxwich@webbestateagents.co.uk | www.webbestateagents.co.uk

