



WHITEHOUSE APARTMENTS, SE1

£500,000

This well-presented one-bedroom apartment, located on the 7th floor, offers bright and modern living throughout. The property features a spacious reception room, a fully fitted kitchen with ample storage, a generously sized bedroom, and a contemporary three-piece bathroom suite.

- 613 Sq Ft
- One Bedroom
- 7th Floor with Lift Access
- 24-Hr Concierge
- Gym, Swimming Pool & Spa
- 0.2 Miles to Waterloo station

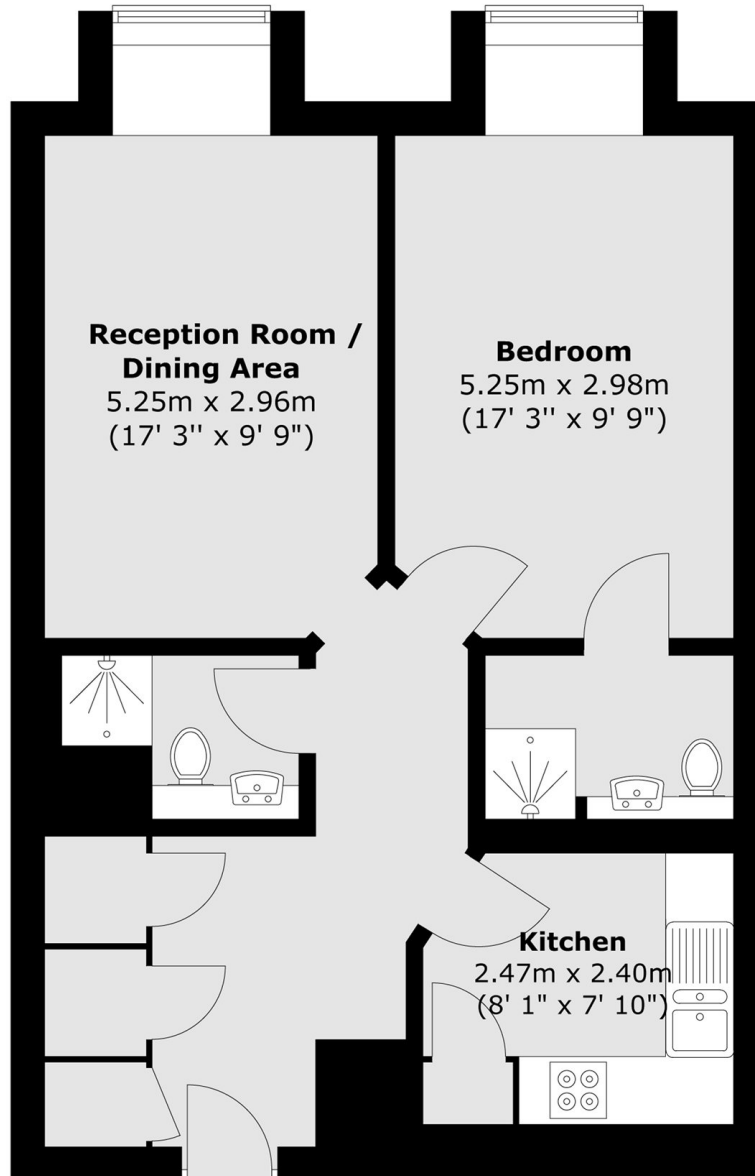


ABOUT THE HOME

Transport links are excellent with Waterloo underground and mainline station being only 0.2M from the building.







Total area (approx.) : 57 sq. m (613 sq. ft)

LiFE RESIDENTIAL

11 Flagstaff House, London,
SW8 2LZ

Sales: 020 7476 1408

Lettings: 020 7582 7989

Energy Rating: C. We aim to make our particulars both accurate and reliable. However they are not guaranteed; nor do they form part of an offer or contract. If you require clarification on any points then please contact us, especially if you're traveling some distance to view. Please note that appliances and heating systems have not been tested and therefore no warranties can be given as to their good working order.