



Cambridge Road, TW11

£3,399,950

Dexters



Cambridge Road, TW11

An impressive double-fronted, semi-detached residence located in the heart of Teddington within the catchment area for excellent schools, and close to the river, train station and Royal Bushy Park.

Offering contemporary living the light filled hallway leads left to a front reception room and right to a beautiful double reception all with feature fireplaces. To the rear of the property a 35ft social kitchen, dining and reception room, bespoke storage units with built in cinema surround sound and bi-fold doors leading out to a generous garden. Completing the ground floor is a utility room with side access, cloakroom and double coat cupboard.

On the 1st floor five well proportioned double bedrooms, two with en-suites and family bathroom. The principal suite with bespoke wardrobes, en suite and air conditioning has views over the rear garden. The exterior includes an expansive garden, Gazebo dining, patio, home office/studio with wifi and underfloor heating plus other secure sheds and workshops.

Cambridge Road is situated on a beautiful tree lined road off Teddington High Street. Very close to Bushy Park, Teddington station and a short walk to the river Thames. An excellent position for schools.

Features

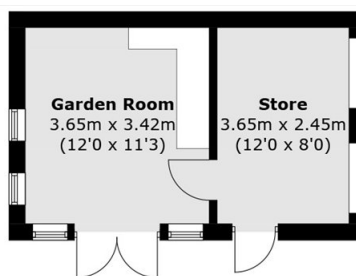
- Garden Studio
- Underfloor Heating
- Acoustic Double Glazing
- Driveway Parking
- Secluded Garden
- Excellent Location



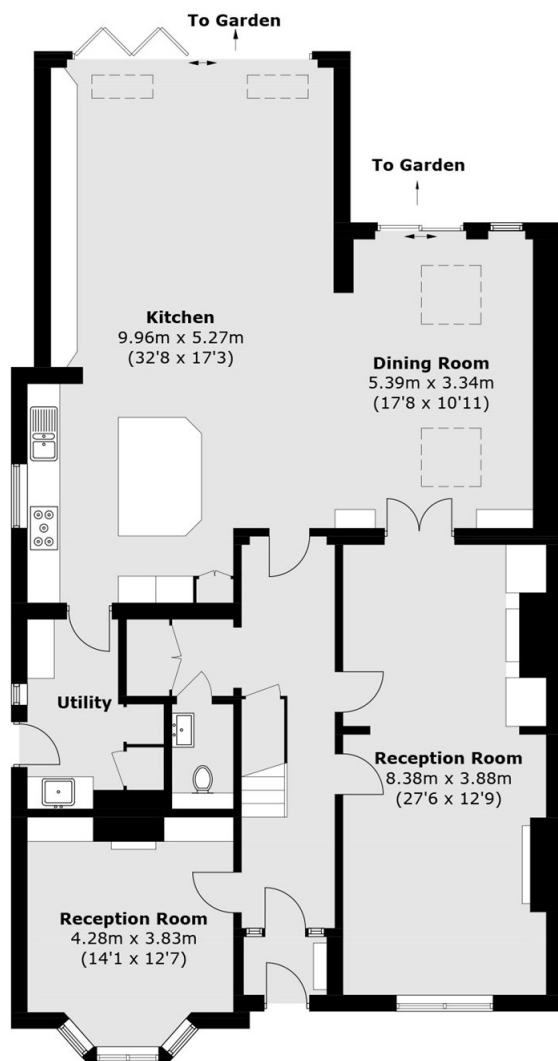




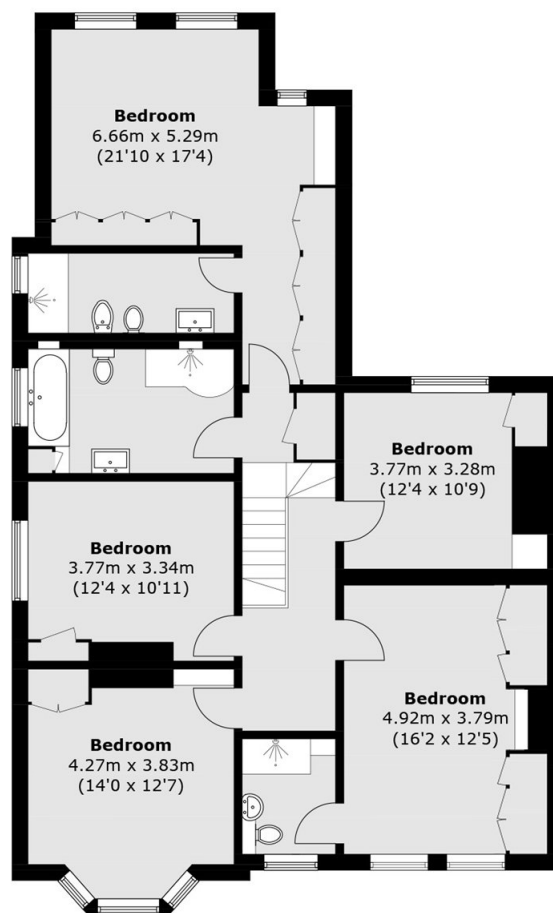
Cambridge Road, Teddington, TW11



(Not Shown In Actual Location / Orientation)



Ground Floor



First Floor

Total area (approx.): 273.2 sq. m (2940.3 sq. ft)
Outbuilding (approx.): 22.3 sq. m (240.0 sq. ft)