



Axminster Road

London, N7

Asking Price £400,000

The Drapery is a striking 1920s art deco building that was previously a department store, now sensitively converted into attractive apartments. The property is approximately 585 sq. ft and features a spacious open-plan living area, seamlessly integrating a modern fitted kitchen with ample room for dining, large windows that flood the space with natural light, a generously sized double bedroom complete with fitted wardrobes and a well-appointed family bathroom.



Axminster Road

London, N7

- One Bedroom
- Excellent Location
- Close To Local Amenities
- Modern Kitchen
- Open Plan Living



Ideally located for the excellent shopping entertainment and transport links with a choice of Holloway Road (Piccadilly Line) Finsbury Park (Victoria Line/National rail) and Archway Station (Northern Line) underground stations. The green open spaces of Waterlow Park and Highgate are in close proximity.

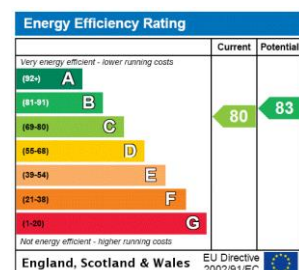
Tenure: Leasehold with 113 years remaining.

Service Charge: £2,507 P.A

Ground Rent: £200 P.A

Local Authority: Islington Council

Council Tax Band: C



Chestertons Camden & Kentish Town Sales

99-101 Parkway

Camden

London

NW1 7PP

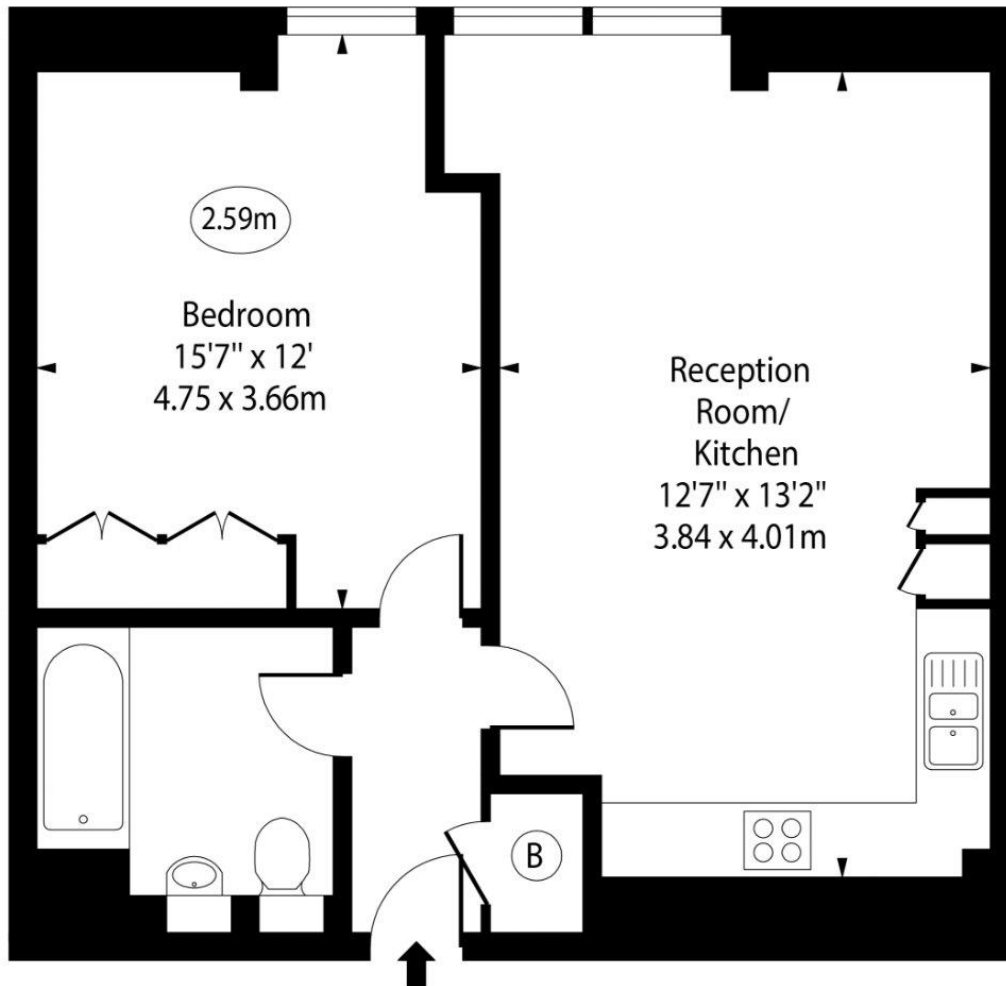
camden@chestertons.co.uk

020 7267 2053

chestertons.co.uk

Axminster Road

○ - Ceiling Height



First Floor

Gross Internal Area - 588 Sq Ft - 54.63 Sq M

Approx Gross Internal Area 588 Sq Ft - 54.63 Sq M

For Illustration Purposes Only - Not To Scale

www.goldlens.co.uk

Ref. No. 025204E

