



CLEMENTS
HABBA



For Sale



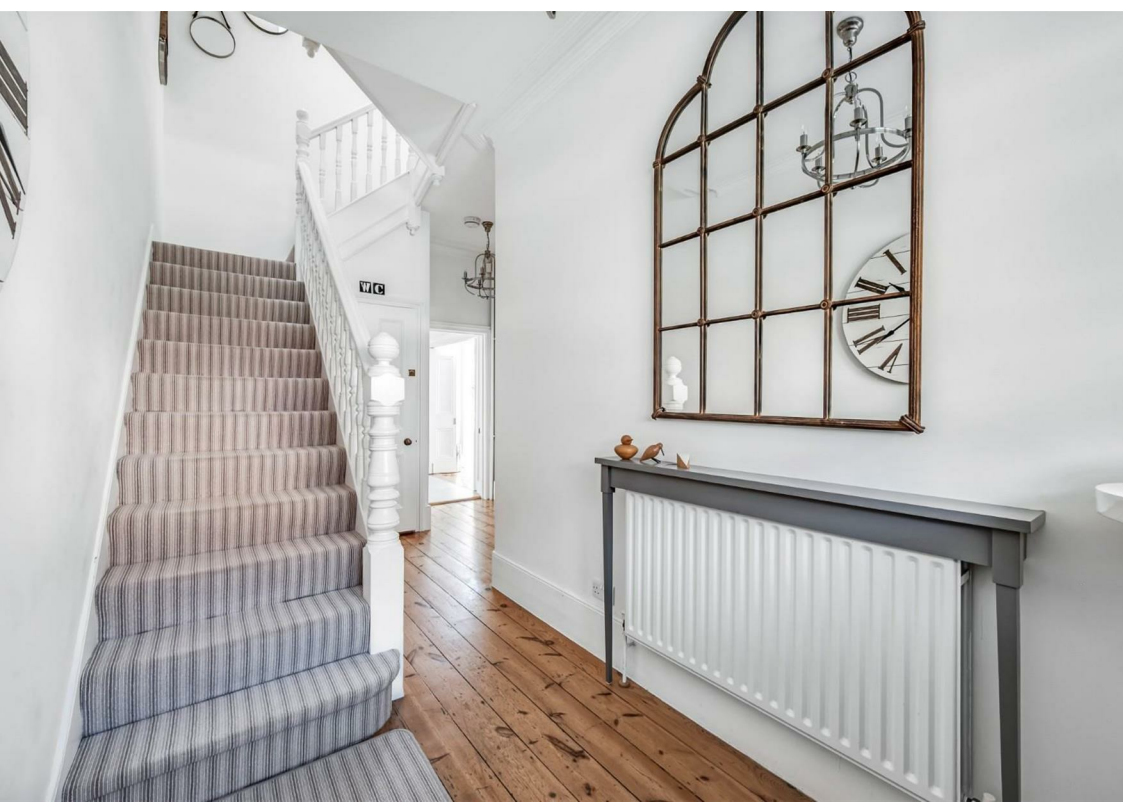
Gainsborough Road, Chiswick, London

£1,800,000

Freehold







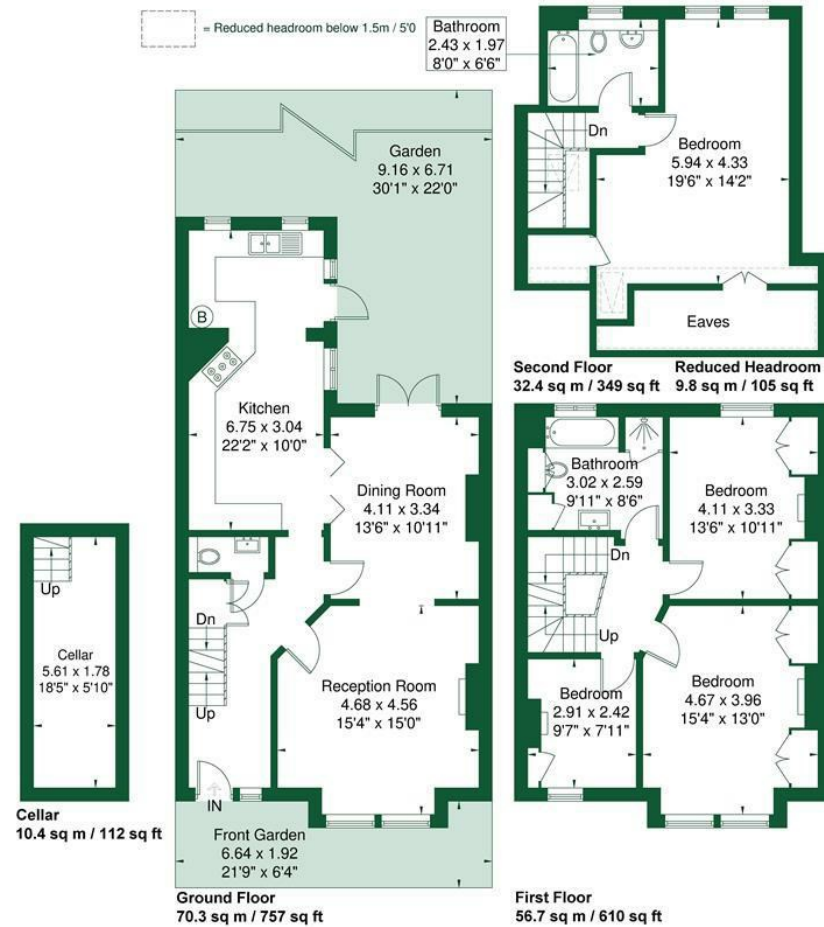
Summary Description

A beautifully presented, rarely available, four bedroom, two bathroom Period home of some 1933 sq ft, with a charming West facing garden, on one of Chiswick's most sought after residential roads in desirable Bedford Park. Offered Chain Free.

- Beautiful Period Home
- 1933 Sq Ft (including eaves)
- Host of Original Features
- Close Proximity to Turnham Green, Stamford Brook and various Bus Routes
- EPC
- Four Bedrooms, Two Bathrooms
- 31' West Facing Garden
- Desirable Bedford Park Conservation Area
- Scope to Extend and Re-model Ground Floor
- Chain Free

Gainsborough Road

Approximate Gross Internal Area = 169.8 sq m / 1828 sq ft
 Eaves Storage / Reduced Headroom = 9.8 sq m / 105 sq ft
 Total = 179.6 sq m / 1933 sq ft



Although every attempt has been made to ensure accuracy, all measurements are approximate.
 The floorplan is for illustrative purposes only and not to scale.
 © www.perspective.co.uk

