



FOSTER
& CO.

Mill End

Henfield, BN5 9UN

Guide price £690,000

This delightful Grade II listed detached house offers a unique blend of character and modern living. Spanning an impressive 1,550 square feet, the property boasts two spacious reception rooms, perfect for entertaining guests or enjoying quiet family evenings.

The home features three well-proportioned double bedrooms, providing ample space for a growing family or guests. With two bathrooms and a cloakroom, morning routines will be a breeze, ensuring convenience for all.

One of the standout features of this property is the stunning garden, with courtyard and lawns. The amazing fireplace adds a touch of warmth and charm, making it an ideal focal point for cosy gatherings during the colder months.

With its rich history and distinctive character, this home is not just a place to live, but a piece of heritage to cherish. Henfield village is a short walk and the surrounding area of Mill End is known for its picturesque scenery with access to the Southdowns link making it a wonderful location for those seeking a peaceful yet vibrant lifestyle.

This property is a rare find, combining historical significance with modern comforts, and is sure to appeal to discerning buyers looking for a home with character and charm. Don't miss the opportunity to make this enchanting house your own.



Energy Efficiency Rating		
	Current	Potential
Very energy efficient - lower running costs		
(92 plus) A		
(81-91) B		
(69-80) C		75
(55-68) D		
(39-54) E	48	
(21-38) F		
(1-20) G		
Not energy efficient - higher running costs		
England & Wales		EU Directive 2002/91/EC

- Detached
- Grade 2 Listed
- Wrap around garden
- No Chain
- Close to countryside walks
- Two reception rooms
- Two Bathrooms

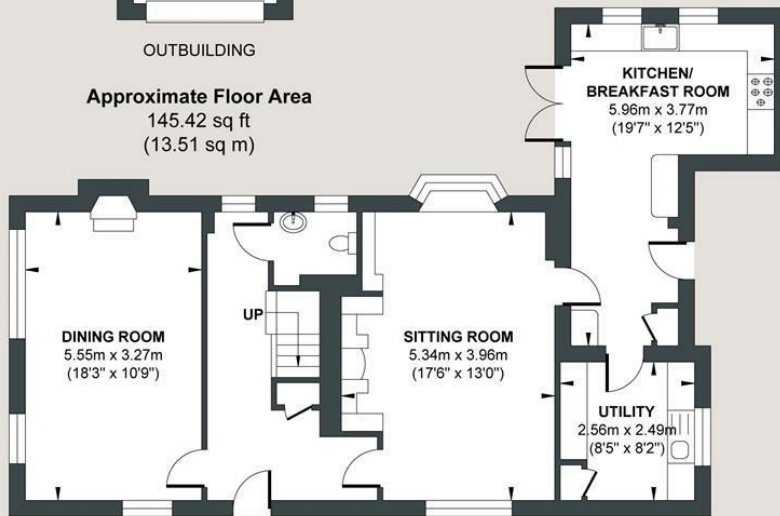
MILL END

Approx. Gross Internal Floor Area (Excluding Outbuilding) = 146.72 sq m / 1579.28 sq ft
 Illustration for identification purposed only, measurements are approximate, not to scale.



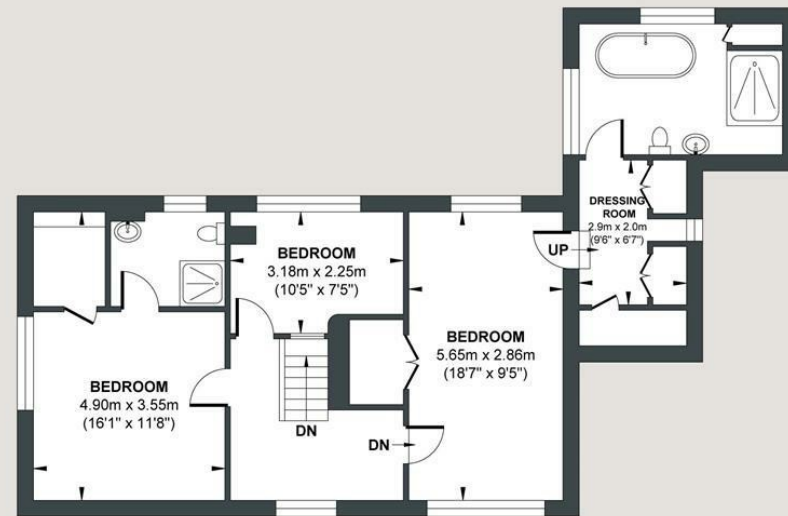
OUTBUILDING

Approximate Floor Area
 145.42 sq ft
 (13.51 sq m)



GROUND FLOOR

Approximate Floor Area
 832.80 sq ft
 (77.37 sq m)



FIRST FLOOR

Approximate Floor Area
 746.47 sq ft
 (69.35 sq m)



Foster & Co and their clients give notice that:

These sales particulars do not constitute any part of an offer of contract and are for guidance for prospective purchases only and should be not relied upon as a statement of fact.

We are not to be held responsible for material information that has not been given to us by our client at the time of marketing.

All measurements are approximate



