

**3**  
BED

# A Stunning Family House With Lovely Views

17, Claremont Road, Newhaven, BN9 0NG



Offers Over £350,000

Freehold

**phillipmann**  
we do more

[www.phillipmann.com](http://www.phillipmann.com)

17 Claremont Road, BN9 0NG

Approximate Gross Internal Floor Area = 92.74 sq m / 998 sq ft

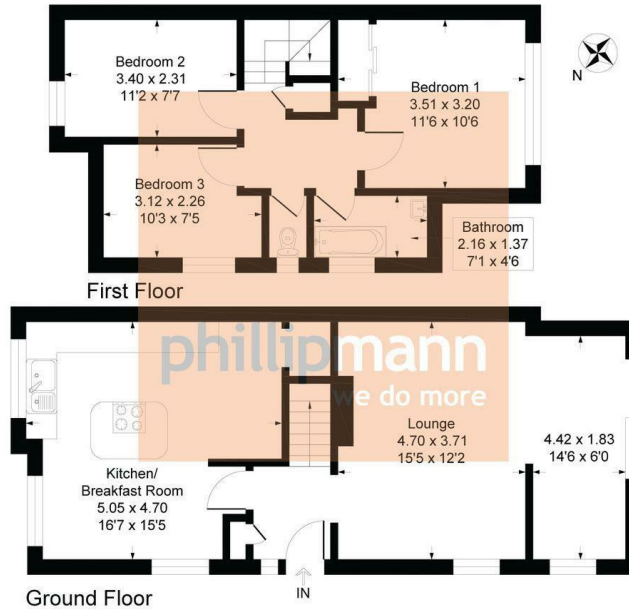


Illustration for identification purposes only, measurements are approximate, not to scale

inbrief...

Phillip Mann estate agents are delighted to offer for sale this three bedroom semi-detached house located on Mount Pleasant. The property enjoys stunning views towards the Sea and over Newhaven.

A part glazed entrance door gives access to the entrance hall, here there is a built in storage cupboard and doors which lead to the downstairs accommodation. The kitchen/breakfast room is a stunning room which has ample space for a table. There is a good range of wall and base units which incorporates a selection of cupboards and drawers. A built in sink unit is set into worktops and there is ample space for appliances. A window overlooks the front of the property. The lounge/diner is a lovely open extended room with laminate flooring, a feature cast iron wood burner and ample space for a dining table. Patio doors overlook the rear garden.

The first floor landing has a storage cupboard and doors which lead to the remaining of the accommodation. Bedroom one is a lovely size room with built in wardrobes and a large window overlooking the rear enjoying the stunning view. Bedroom two and three and further good size rooms which overlook the front. Completing the inside is a family bathroom which is fitted with a bath, WC and wash hand basin.

Outside there is a good size rear garden which has several seating areas, lawn, greenhouse and garden shed.

The front has off road parking.



Council Tax Band C

Energy Rating D

moreinfo...

Phillip Mann Newhaven Office  
16 Bridge Street, Newhaven, BN9 9PJ  
01273 517517



To see more details on this & all our homes go to [www.phillipmann.com](http://www.phillipmann.com)