



Guide Price

£190,000

Leasehold

2x  1x  1x 

**Knoll Court, Cheriton
Gardens, Folkestone,
Kent, CT20**

OVER 60?

Secure this property
for up to **59% less!**

Wards
Helping you move forwards



Main features

- Spacious accommodation with two double bedrooms
- Large balcony, perfect for relaxing
- No chain, allowing for a speedy move
- Garage
- Short walk from the town centre and beautiful Leas

Accommodation

SECOND FLOOR

Hallway

Lounge/Diner: 20'10 x 17'8 (6.35m x 5.39m)

Balcony

Kitchen: 11'1 x 9'9 (3.38m x 2.97m)

Bedroom 1: 17'4 x 11'11 (5.29m x 3.63m)

Bedroom 2: 10'9 x 9'1 (3.28m x 2.77m)

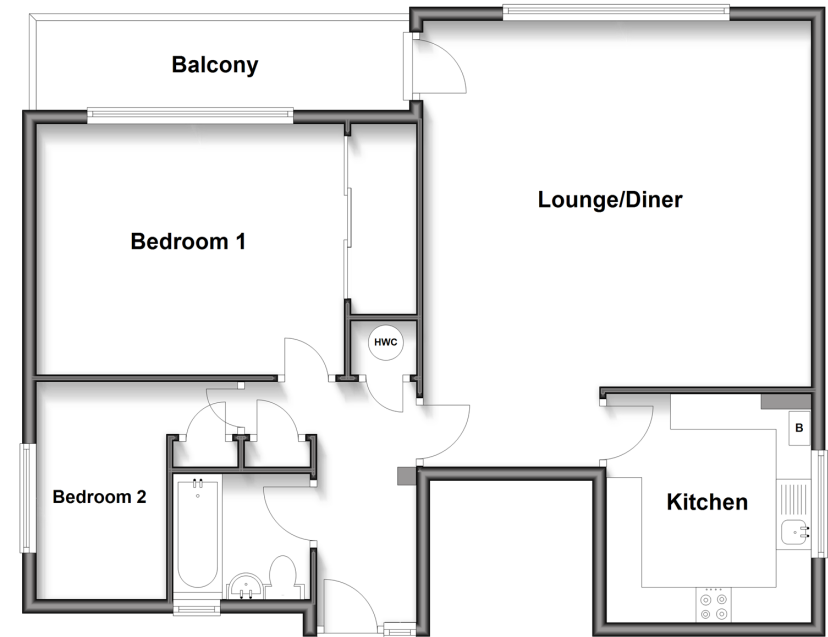
Bathroom

OUTSIDE

Garage

Second Floor Apartment

Approx. 78.8 sq. metres (848.5 sq. feet)



Call Folkestone - 01303 256505 ■ wardsfolkent.co.uk

- Legal advice should be taken to verify fixtures/fittings, planning, alterations and/or lease details
- Appliances & services are untested, dimensions are approximate and floor plans are not to scale
- Through a Homewise Home For Life Plan people aged 60+ can secure this property for up to 50% less, by purchasing a Lifetime Lease.



12638343/20250924/LS/CW