



75 Belmont Road, Maidenhead SL6 6LG

welcome to

75 Belmont Road, Maidenhead

A beautifully presented and thoughtfully modernised two-bedroom home, offering the perfect blend of character, charm and contemporary living in a highly convenient Maidenhead location.

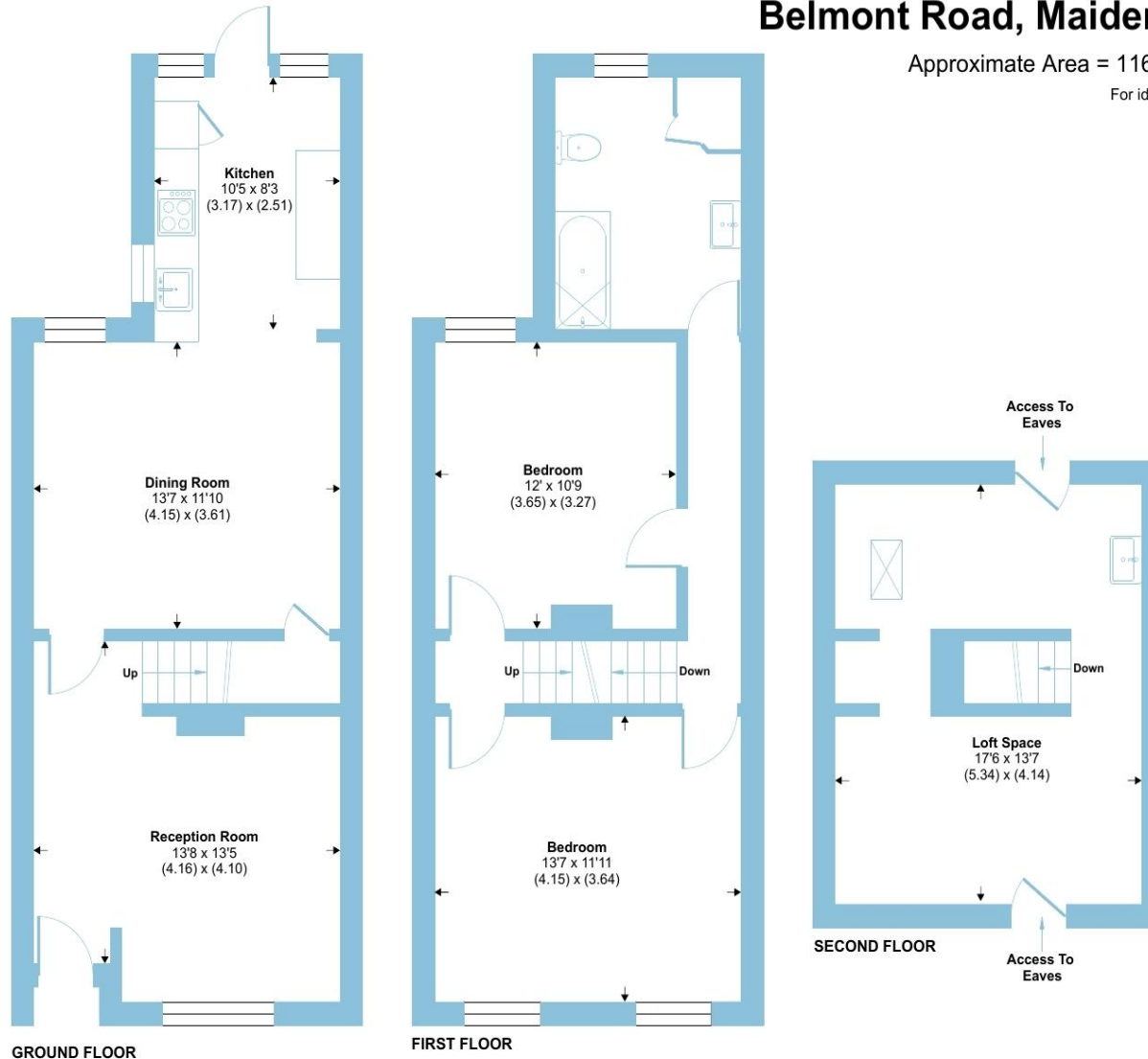




Belmont Road, Maidenhead, SL6

Approximate Area = 1164 sq ft / 108.1 sq m

For identification only - Not to scale



 Floor plan produced in accordance with RICS Property Measurement 2nd Edition, incorporating International Property Measurement Standards (IPMS2 Residential). © nchecom 2026. Produced for Barnard Marcus. REF: 1453537



This attractive property has been updated to a high standard while retaining its original appeal, creating a warm and inviting atmosphere throughout. The ground floor features a bright and spacious living area, ideal for both relaxing and entertaining, a dining room which leads to the stylish, well-appointed kitchen with modern fittings and ample storage.

Upstairs, the property offers two well-proportioned bedrooms, both filled with natural light, and a sleek, modern bathroom finished to an excellent standard. Every detail has been carefully considered to maximise comfort and functionality. Stairs lead to the bonus room which has been extended and would make for an ideal office space..

Externally, the home benefits from a brand new roof that has been put on in the last month and private garden, perfect for outdoor dining or enjoying quieter moments. Its position on Belmont Road provides easy access to local amenities, transport links, and Maidenhead town centre, making it an ideal choice for professionals, first-time buyers, or those looking to downsize.

Combining character features with contemporary upgrades, this charming home is ready to move into and enjoy from day one.

welcome to

75 Belmont Road, Maidenhead

- UPDATED TO A HIGH STANDARD
- BRAND NEW ROOF
- BRIGHT & SPACIOUS LIVING AREA
- WELL-APPOINTED KITCHEN
- TWO WELL-PROPORTIONED BEDROOMS
- MODERN BATHROOM
- BONUS LOFT ROOM WHICH HAS BEEN EXTENDED
- PRIVATE GARDEN, ON-STREET PARKING

Tenure: Freehold EPC Rating: E

Council Tax Band: D

offers in excess of

£500,000



Please note the marker reflects the postcode not the actual property

check out more properties at rogerplatt.co.uk



Property Ref:
MHD123825 - 0004

1. MONEY LAUNDERING REGULATIONS Intending purchasers will be asked to produce identification documentation at a later stage and we would ask for your co-operation in order that there is no delay in agreeing the sale. 2. These particulars do not constitute part or all of an offer or contract. 3. The measurements indicated are supplied for guidance only and as such must be considered incorrect. Potential buyers are advised to recheck measurements before committing to any expense. 4. We have not tested any apparatus, equipment, fixtures or services and it is in the buyers interest to check the working condition of any appliances. 5. Where an EPC, or a Home Report (Scotland only) is held for this property, it is available for inspection at the branch by appointment. If you require a printed version of a Home Report, you will need to pay a reasonable production charge reflecting printing and other costs. 6. We are not able to offer an opinion either written or verbal on the content of these reports and this must be obtained from your legal representative. 7. Whilst we take care in preparing these reports, a buyer should ensure that his/her legal representative confirms as soon as possible all matters relating to title including the extent and boundaries of the property and other important matters before exchange of contracts.

Roger Platt is a trading name of Sequence (UK) Limited which is registered in England and Wales under company number 4268443, Registered Office is Cumbria House, 16-20 Hockliffe Street, Leighton Buzzard, Bedfordshire, LU7 1GN. VAT Registration Number is 500 2481 05.

roger platt



01628 773333



Maidenhead@rogerplatt.co.uk



25-29 Queen Street, MAIDENHEAD, Berkshire,
SL6 1NB



rogerplatt.co.uk